

# QGIS AND DATA

**Virtual training on the Pacific Islands Protected Area Portal (PIPAP)  
and Geographic Information Systems (GIS) for improved protected  
area planning and management in the Solomon Islands**

Bradley Eichelberger

October 19-23, 2020



*This package/collection of training materials constitute an introductory, basic-level training to open source GIS software (QGIS) targeting technical-level government officers. The primary goal of the material is to provide participants with the tools to visualise, map, and collect spatial data for more effective planning and management of protected areas.*

*The materials include a series of presentations, video lectures and step-by-step instructions which were utilised in recent in-country technical trainings successfully carried out for two Pacific island countries, Samoa and Vanuatu and are planned to be used for further country trainings in the Pacific region.*

*The training materials were produced by the Secretariat of the Pacific Regional Environment Programme (SPREP) through assistance from the EU-ACP Biodiversity and Protected Areas Management (BIOPAMA) Programme ([www.biopama.org](http://www.biopama.org)). The contents of these materials are the sole responsibility of SPREP and can in no way be taken to reflect the views of the donors.*



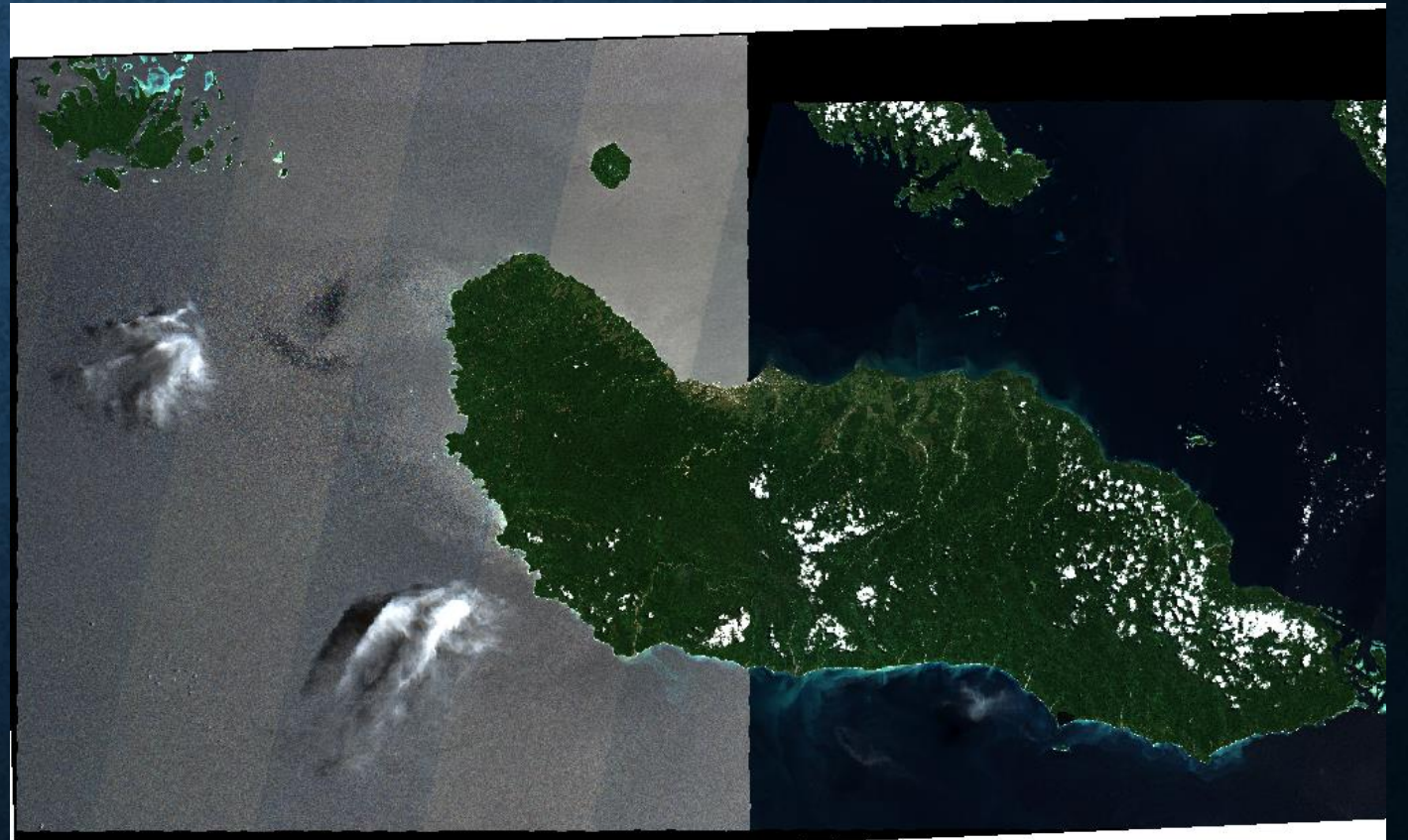
# VECTOR DATA

- SLB\_2020\_boundaries\_OSM
  - Land mass of Solomon Islands, Open Street Map
- SLB\_2020\_roads\_OSM
  - Roads in the Solomon Islands, Open Street Map
- SLB\_2020\_placenames\_OSM
  - Names of popular places, Open Street Map
- SLB\_WDPA\_points
  - Protected areas from the World Database of Protected Areas
- SLB\_WDPA\_polygons
  - Protected areas from the World Database of Protected Areas



# RASTER DATA

- SLB\_2020\_ImageryGuadalcanal\_Sentinel2.tif
  - Senitnel-2 satellite imagery
  - 10-meter resolution
  - Captured: 2020
  - Coverage: Guadalcanal Island



# Menu Options

## Toolbar

## Browser

### Recent Projects

project  
Y:\Permitting\Field\_data\GIS5\project.qgs  
EPSG:32655 (WGS 84 / UTM zone 59N)

## Map Canvas

### Processing Toolbox

- Search...
- Recently used
- Cartography
- Database
- File tools
- Graphics
- Interpolation
- Layer tools
- Network analysis
- Raster analysis
- Raster terrain analysis
- Raster tools
- Vector analysis
- Vector creation
- Vector general
- Vector geometry
- Vector overlay
- Vector selection
- Vector table
- GDAL
- GRASS
- SAGA

## Toolbox

## Table of Contents

New QGIS version available: Visit <https://download.qgis.org> to get your copy of version 3.10.1

## Status Bar

Coordinate  Scale 1:2985429 Magnification 100% Rotation 0.0° Render EPSG:4326

