

TONGA

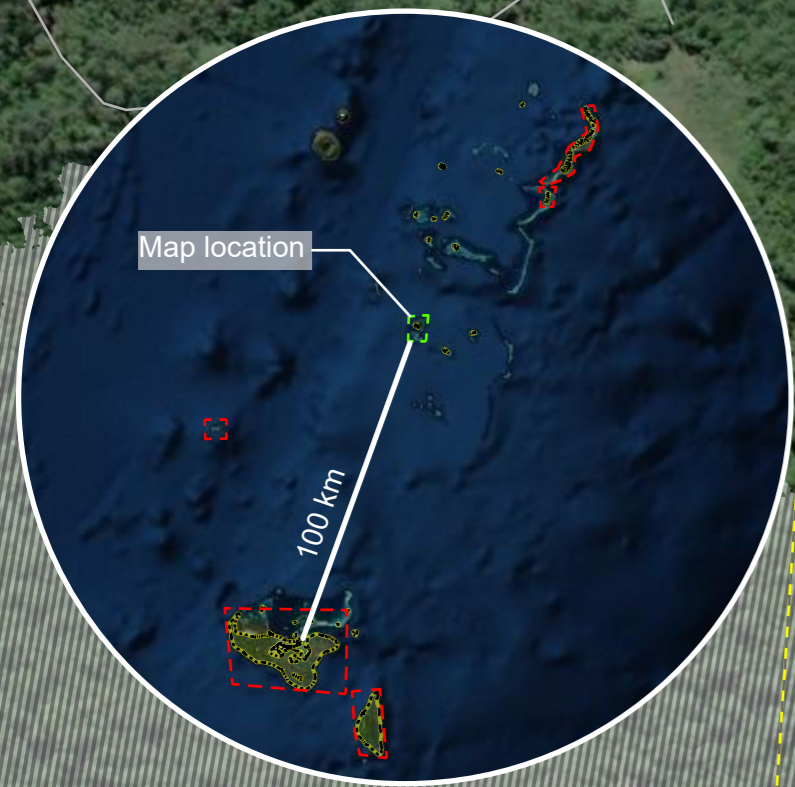
NOMUKA VILLAGE, MU'OMU'A DISTRICT, HA'APAI DIVISION

IMAGERY ANALYSIS: 17/01/2022 PUBLISHED 17/01/2022 V1



VOLCANO
VO20220115TON

ANALYZED AREA: 56km²
 DAMAGED STRUCTURES: 41
 ASH COVERED STRUCTURES: 63
 NO VISIBLE STRUCTURES: 138



Damage assessment in Nomuka village, Mu'omu'a district, Ha'apai division Nomuka Island, as of 17 January 2022

This map illustrates effects of the Hunga Tonga-hunga Ha'apai volcanic eruption in Nomuka island (Mu'omu'a district, Tonga) and damage assessment as detected from a Pleiades image acquired on 17 January 2022, 10:53 local time. In this island we identified ~250 structures. 104 structures were analyzed in the cloud-free area and 41 structures were identified as damaged and almost all the structures were covered with ash. This is a preliminary analysis and has not yet been validated in the field. Please send ground feedback to UNITAR-UNOSAT.

- Legend**
- Damaged structure
 - Ash covered structure
 - No visible structure
 - Village
 - Tertiary road
 - Other road
 - Village boundary
 - ▨ Cloud obstruction [17 Jan. 2022]