

TONGA

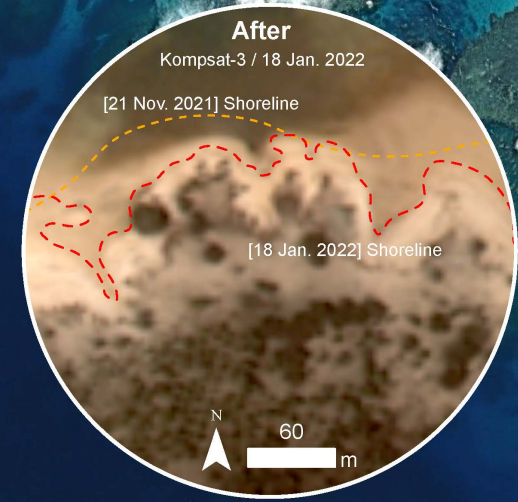
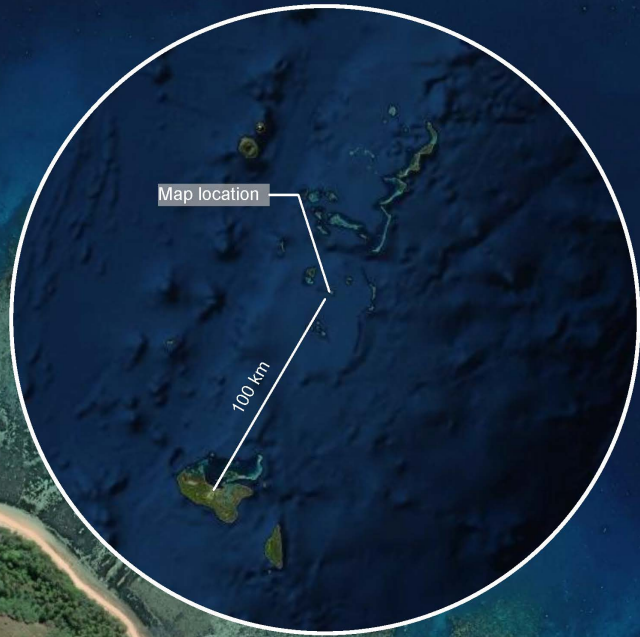
MANGO VILLAGE, MU'OMU'A DISTRICT, HA'APAI DIVISION

IMAGERY ANALYSIS: 18/01/2022 PUBLISHED 20/01/2022 V2

ANALYZED AREA
80ha

DAMAGED STRUCTURES
26

POTENTIALLY DAMAGED STRUCTURE
1



Damage assessment in Mango Island, Mu'omu'a district, Ha'apai division, Tonga as of 18 January 2022

This map illustrates effects of the Hunga Tonga-hunga Ha'apai volcanic eruption in Mango island (Mu'omu'a district, Tonga) and damage assessment as detected from a Komsat-3 image acquired on 18 January 2022, 14:22 local time. In this island, UNOSAT identified 26 structures as damaged and/or destroyed and 1 structure as potentially damaged. The entire island appears to be covered with ashes. This is a preliminary analysis and has not yet been validated in the field. Please send ground feedback to UNITAR-UNOSAT.

- Legend**
- Damaged / Destroyed structure
 - Potentially damaged structure



Spatial Reference Name: WGS 1984 UTM Zone 1S
 PCS: WGS 1984 UTM Zone 1S
 GCS: GCS WGS 1984
 Datum: WGS 1984

Satellite Data (Post-event): Komsat-3
 Imagery Date: 18 Jan. 2022, 01:22 UTC
 Resolution: 70 cm
 Copyright: © KARI (2022)
 Source: KARI/KOMPSAT3

Satellite Data (Post-event): Kanopus-V
 Imagery Date: 18 Jan. 2022, 23:12 UTC
 Resolution: 2.2 m
 Copyright: © NTS OIMZ, All Rights Reserved, ROSCOSMOS 2022
 Source: ROSCOSMOS 174°43'W

Satellite Data (Pre-event): WorldView-2
 Imagery Date: 21 Nov. 2021
 Resolution: 50 cm
 Copyright: © DigitalGlobe, Inc. (2021)
 Source: HDDS / USGS

Background: ESRI World Imagery
 Boundary data: OCHA
 Road data: OpenStreetMap
 Populated place: OpenStreetMap
 Building footprint: OpenStreetMap

Analysis: United Nations Satellite Centre (UNOSAT)
 Production: United Nations Satellite Centre (UNOSAT)

Map Scale for A3: 1:6,000
 0 40 80 160 m