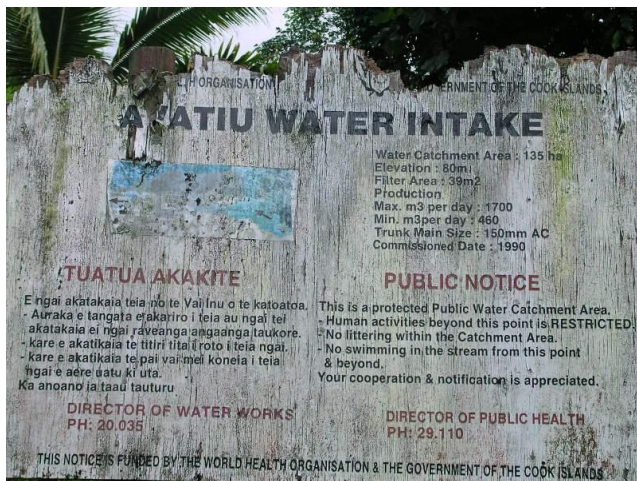


# Diagnostic Report for Integrated Water Resource Management in the Cook Islands

Tim Davie, Landcare Research NZ Ltd, P.O. Box 40, Lincoln, New Zealand  
Ben Parakoti, Ministry of Works, P.O. Box 102, Rarotonga



## Table of Contents

Table of Contents .....	i
Table of Figures.....	ii
List of Acronyms .....	ii
Executive Summary .....	iii
Acknowledgements.....	iv
1 Introduction .....	1
1.1 Objectives of this report .....	2
1.2 Scope of this report.....	2
2 General Overview.....	3
3 Integrated Water Resources Management Situation for the Cook Islands .....	7
3.1 Water Resources Management.....	7
3.1.1 <i>Types of freshwater resources</i> .....	7
3.1.2 <i>Types of freshwater uses</i> .....	8
3.1.3 <i>Majors Issues and Concerns</i> .....	9
3.1.4 <i>Measures to manage impacts and concerns (IWRM approaches)</i> .....	10
3.2 Island Vulnerability.....	12
3.2.1 <i>Types of disasters with major issues and concerns</i> .....	12
3.2.2 <i>Measures to manage impacts and concerns (IWRM approaches)</i> .....	13
3.3 Awareness .....	16
3.3.1 <i>Type of awareness campaigns, advocacy initiatives are currently being undertaken in the area of water resources management</i> .....	16
3.3.2 <i>Major Issues and Concerns</i> .....	17
3.3.3 <i>Measures to manage impacts and concerns (IWRM approaches)</i> .....	17
3.4 Technology .....	18
3.4.1 <i>Types of water supply systems</i> .....	18
3.4.2 <i>Types of wastewater/sanitation systems</i> .....	19
3.4.3 <i>Majors Issues and Concerns</i> .....	19
3.4.4 <i>Measures to manage impacts and concerns (IWRM approaches)</i> .....	20
3.5 Institutional Arrangements.....	21
3.5.1 <i>Types of Institutional Arrangements</i> .....	21
3.5.2 <i>Majors Issues and Concerns</i> .....	22
3.5.3 <i>Measures to manage impacts and concerns (IWRM approaches)</i> .....	22
3.6 Financing .....	23
3.6.1 <i>Types of Financing Arrangements</i> .....	23
3.6.2 <i>Majors Issues and Concerns</i> .....	23
3.6.3 <i>Measures to manage impacts and concerns (IWRM approaches)</i> .....	23
4 Linkages to other areas.....	24
4.1 Land use and Agriculture .....	24
4.2 Habitats and Ecosystems.....	27
4.3 Health and Hygiene .....	28
4.4 Watershed and coastal management.....	29
5 Stakeholder Engagement.....	30
6 Other programmes, projects and activities related to IWRM. ....	31
7 Capacity Development Needs for Removing the Barriers .....	32
8 Introducing an Integrated Approach towards Barrier Removal.....	33
9 References.....	35

## Table of Figures

Figure 1: Location of the Cook Islands in the Pacific Ocean .....	3
Figure 2: Map of the Cook Islands, including Avarua (capital) .....	3
Figure 3: Average climatic information for Rarotonga .....	5
Figure 4: Water reticulation system for Rarotonga showing intakes (blue basins) and the ring main (purple). The are with only a ring main has not been upgraded yet (January 2007) at which time all pipelines are GPS located .....	7
Figure 5: Enlarged view of the water reticulation system in south-west Rarotonga showing the branch-main (red), sub-main (blue), and cross-main (green) connections running from the ring main (purple) .....	8
Figure 6: Sign below the Avatiu water intake (at start of popular cross island trek) detailing the informal water reserve .....	11
Figure 7: Daily Number of low rainfall months at Rarotonga airport ( <i>Source: ADB 2006</i> ).....	13
Figure 8: Daily Mean Values of Sea Level for Rarotonga (1977 to 2002) ( <i>Source: ADB 2006.</i> ).....	13
Figure 9: Signs at road entrance to Takuvaine .....	16
Figure 10: Structure of the Cook Islands Water Safety Plan committee.....	22
Figure 11: Small plot on Rarotonga growing taro (dryland), cassava and other crops.....	24
Figure 12: Taro growing in a wetland created by diverting part of a stream channel through a series of terraces. Takuvaine Valley, Rarotonga.....	25
Figure 13: Intensive piggery on Rarotonga (source: Evans, 2005).....	25
Figure 14: Waste disposal from piggery on Rarotonga (source: Evans, 2005).....	26

## List of Acronyms

ADB	Asian Development Bank
CEA	Cyclone Emergency Assistance
CSIRO	Commonwealth Scientific and Industrial Research Organisation (Australia)
ENSO	El Niño Southern Oscillation
GDP	Gross Domestic Product
GEF	Global Environment Facility
IWRM	Integrated Water Resource Management
IWP	International Waters Project (2001-2006)
MFEM	Ministry of Finance & Economic Management
MoW	Ministry of Works (Rarotonga)
NIWA	National Institute of Water and Atmospheric Research Ltd (NZ)
OMIA	Office of the Ministry of Island Administration
PIC	Pacific Island Country
PWA	Pacific Water Association
RAP	Pacific Regional Action Plan
SIDS	Small Island Developing States
SOPAC	Pacific Islands Applied Geoscience Commission
SPCZ	South Pacific Convergence Zone
SPREP	South Pacific Regional Environment Programme
UNDP	United Nations Development Programme
UNEP	United Nations Environment Programme
UNESCO	United Nations Education, Scientific and Cultural Organisation
WWF	World Water Forum
WSC	Water Safety Committee

## Executive Summary

Integrated Water Resource Management (IWRM) offers a systematic approach to address the sustainable development, allocation and monitoring of water resources for Pacific Island Countries (PICs). The key concept of IWRM is that it provides a framework to integrate societal, economic and environmental considerations in water resource management. It recognises that all water use is interdependent and therefore should be managed in an integrated manner.

The Cook Islands are located in the Pacific Ocean between latitudes 14° S and 22° S, and longitudes 159° W and 164° W. They are a Polynesian island group comprising of 15 widely dispersed islands, surrounded by an exclusive economic zone of 1.8 million square kilometres. Like many PICs, water supply issues are dominant in the management of water resources, and attention generally has focused on the areas of greater population, mainly Rarotonga. The islands source potable water from two main sources. In the Southern Group of islands which includes the main island of Rarotonga (volcanic origin), surface water is sourced from springs and streams within catchments valleys. In the Northern Group of islands (coral atolls), water is sourced from rainwater and groundwater.

For the Cook Islands the key water resource management issues that would benefit from an IWRM approach are:

- The lack of a **legal and policy framework** for water resource management. Under the present system government departments and other organisations are unsure of each others roles in the area of water resource management and there is possible duplication and/or omission of roles. It also leads to mistrust on the motives behind integration in the management of water resources.
- **Capacity building** in the area of integrated management. This is not a lack of capability among people currently concerned with water management; the majority are tertiary level trained with an excellent understanding of the key water management issues. The issue is that these people are inundated with projects in many different areas related to water and there are not enough staff to take on new initiatives.
- Poor **waste water treatment** in septic tank systems and the subsequent transfer of nutrients in groundwater and through into the lagoon system. Associated with this is the governance of waste water treatment coming under the Ministry of Health so that it is not treated as an environmental issue.
- **Leakage and wastage of reticulated water** are major issues for Rarotonga where water supply is funded directly through government expenditure (i.e. no water charging either by volume or connection). The funding system also makes infrastructure investment vulnerable to change through political and government budgetary constraints.
- Climatic **vulnerability of water supply**, particularly to drought. The simple nature of the reticulation systems on Rarotonga and Mangaia mean they are less likely to be vulnerable to flooding but they are to drought. Water demand management can help lessen the demand but there is still a need to hedge supply sources against extremely low flows in the source streams.
- **Land use practices affecting stream water quality**, and indirectly the lagoon. This is particularly a problem for piggeries adjacent to streams. There is also a concern over wetland taro cultivation above water supply sources.
- The **land use tenure system** is detrimental to agricultural investment in water smart irrigation systems and other technology that might lessen agriculture's water impact.

Some of these issues are being addressed through current projects (e.g. water reticulation leakage, water demand management, piggery impact on streams) but there are still many issues that would benefit from IWRM. However there is considerable potential for IWRM to be a reality in the Cook Islands. The country has the advantage of being relatively small, with a moderate to high rainfall and without greatly increasing population pressures. The

largest requirement is a political and community will for integration between agencies so that IWRM can lead to achieving sustainable growth in harmony with the Cook Islands' culture and environment

## **Acknowledgements**

The authors wish to acknowledge the time given by many people interviewed, or who took part in group meetings for this report. In particular: Taurakei Raea and staff at the National Environment Service; William Wigmore; Patrick Arioka and staff from MFEM; staff at Ministry of Marine Resources and the Ministry of Health.

Tim Davie would like to acknowledge Ata Hermann, Ben Parakoti and staff at the Ministry of Works on Rarotonga for facilities and hospitality during his visit to Rarotonga.

## 1 Introduction

The constraints and needs of small island developing states (SIDS) to achieve sustainable water management have been articulated in the SIDS Session Statement formulated at the 3<sup>rd</sup> World Water Forum (3WWF). The statement refers to three priority issues.

- Inadequate water resources management in climatic extremes due to: the small nature of small island water resources; natural climate variability; and lack of human capacity.
- Inadequate water and wastewater service providers due to: lack of human capacity; excessive water demand through water wastage and loss; and poor cost recovery.
- Inadequate water governance and awareness due to: poorly resourced and highly fragmented colonial administration structures coupled with strong traditional governance practices.

The common water resources management and water use efficiency issues throughout the Pacific Island Countries (PICs) can be summarised as follows:

- An increasing demand for water (potable, irrigation and industrial) coupled to a rise in population, increased tourism and/or expanding development.
- Inadequate and inefficient capture, storage and distribution of water resources (small catchments, inadequate rainfall forecasting, poor watershed management, poor infrastructure).
- Pollution and associated reduction in water quality as a result of:
  - Poorly controlled urban and industrial expansion and development
  - Inappropriate domestic waste disposal
  - Inadequate sanitation and drainage infrastructures
  - Inappropriate agricultural practices (erosion of soils, excessive use of agro-chemicals, deforestation).
- Climatic threats to water supplies (e.g. drought, flooding, storm surge, sea level rise).

Integrated Water Resource Management (IWRM) offers a systematic approach to address the sustainable development, allocation and monitoring of water resources for PICs. The key concept of IWRM is that it provides a framework to integrate societal, economic and environmental considerations in water resource management. It recognises that all water use is interdependent and therefore should be managed in an integrated manner.

At the heart of IWRM is recognition of the interdependence of land use, stream water quality and lagoon/marine water quality. Changing the balance of one (e.g. over-extracting water from a stream, or changing from rural to urban landuse) will upset the balance in another area. The word “integrated” in IWRM has four different connotations (Fenemor et al, 2006).

1. Integration between science and policy so that the science being carried out is closed linked into policy requirements and vice versa.
2. Integration between the local community, science and policy so that community is linked into the planning and execution of both science and policy.
3. Integration between different scientific disciplines to tackle multi-dimensional problems
4. Spatial integration throughout a watershed so that the cumulative impact of different actions can be assessed.

The GEF funded IWRM project attempts to address the issues listed above through a coordinated and holistic approach to water resources management covering all key areas of the Pacific Regional Action Plan on Sustainable Water Management (Pacific RAP).

As an example of the need for IWRM in the Cook Islands, an economic evaluation of watershed pollution in Rarotonga has estimated avoidable cost from improved watershed management at NZ\$7.4 Million per year (3% of GDP in 2003), with a highest estimate stretching to NZ\$17.7M (Hajkowicz and Okotai, 2005). The figures were derived from estimates of the cost of different categories in the absence of pollution; the major categories being healthcare, water treatment and alternative supply augmentation, and loss of tourism income (Hajkowicz and Okotai, 2005).

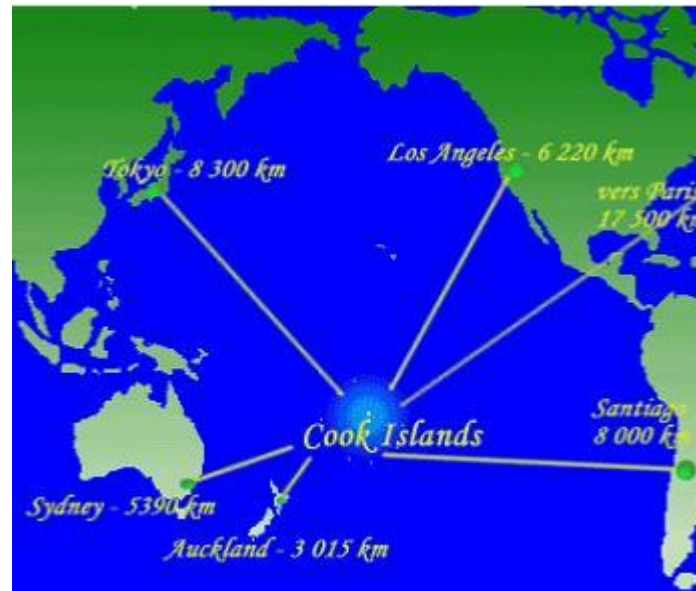
### **1.1 Objectives of this report**

1. Provide a summary of IWRM needs, issues and current initiatives for the Cook Islands.
2. Collate information related to water and wastewater in the Cook Islands for future use by the National IWRM Focal Point and SOPAC.
3. Provide a reference document on the state of IWRM in the Cook Islands to February 2007.

### **1.2 Scope of this report**

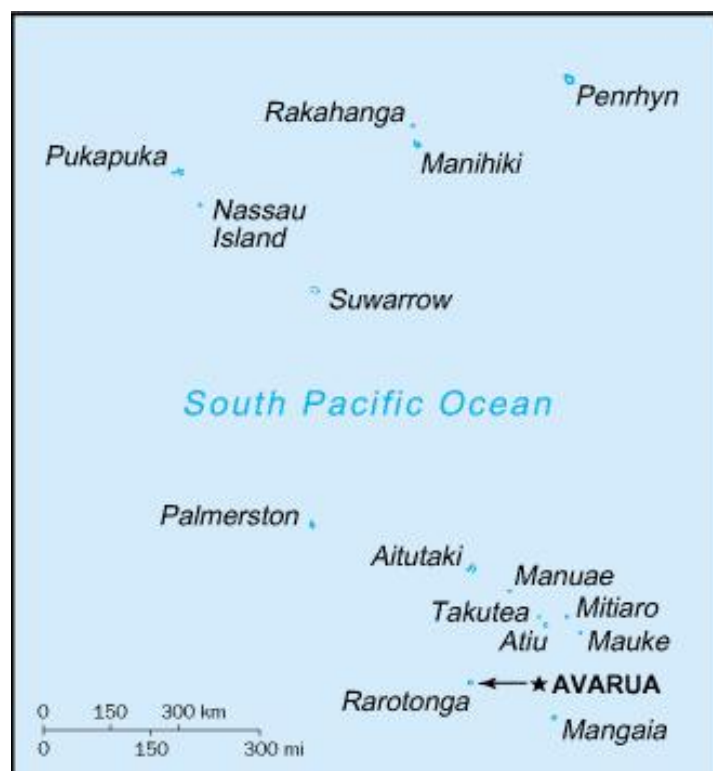
This report covers three aspects of IWRM: water supply; treatment of wastewater and water quality in the fresh water and marine environments. In covering these three elements, issues of land use, human impact on the environment, and ecosystem services are covered. The information in the report is derived from interviews by Dr Davie with key stakeholders and previously written reports and scientific papers.

## 2 General Overview



**Figure 1: Location of the Cook Islands in the Pacific Ocean**

The Cook Islands are located in the Pacific Ocean between latitudes 14° S and 22° S, and longitudes 159° W and 164° W (Fig. 1). They are a Polynesian island group comprising of 15 widely dispersed islands, surrounded by an Exclusive Economic Zone of 1.8 million square kilometres. The country consists of two main island groups: the Southern Group of Rarotonga, Aitutiki, Atiu, Mangaia, Manuae, Mauke, Mitiaro, Palmerston and Takutea and the Northern Group of Manihiki, Nassau, Penrhyn, Pukapuka, Rakahanga and Suvarrow (fig. 2 and table 1).



**Figure 2: Map of the Cook Islands, including Avarua (capital)**



**Table 1: Geographic characteristics of the 15 islands within the Cook Islands (source: AusAID, 2004; Binnie, 1984; Thompson, 1986).**

Island	Area (km <sup>2</sup> )	Population (2001)*	Distance from Rarotonga (km)	Geomorphic structure	Annual rainfall (mm)
<b>SOUTHERN GROUP</b>					
Rarotonga	67	12,188	0	High volcanic	2100 (airport) 3063 (Totokoitu)
Mangaia	52	744	203	Makatea**	1904
Mauke	18	470	278	Makatea	1574
Atiu	27	623	215	Lagoon/hills	n/a
Mitiaro	22	230	263	Makatea	1828
Aitutaki	18	1,946	220	High volcanic/lagoon	1944
Manu'ae	6	0		Atoll	n/a
Takutea	1.3	0		Atoll	n/a
<b>NORTHERN GROUP</b>					
Penrhyn	10	357	1365	Atoll	1868
Manihiki	5	515	1204	Atoll	n/a
Rakahanga	4	169	1248	Atoll	2352
Pukapuka	1.3	664	1324	Atoll	2816
Nassau	1.3	72	1160	Sand cay	n/a
Suwarrow	0.4	1	950	Atoll	n/a
Palmerston	2	48	500	Atoll	1988

\* Population is total population, including visitors (source Cook Islands Census)

\*\* Makatea is a general term for raised coral limestones resting on small volcanic cones.

The Cook Islands is a self governing country which maintains a free association with New Zealand. The total population in the 2001 census was 18,027 with a resident population of 15,017. Rarotonga is the major populated island (9,451 resident in 2001) with the remainder of the Southern Group having 25% of the resident population and the Northern Group 12% (Census, 2001).

The islands of the Southern Group differ widely in form, structure and relief, which makes it difficult to deduce a generalised geological history that is consistent for the whole group (Wood and Hay, 1970). The group includes a high mountainous island of Rarotonga, four raised coral islands with volcanic cores (Mangaia, Mauke, Mitiaro and Atiu) one atoll (Manuae) one near atoll with a volcanic core (Aitutaki), and a sand-cay on a coral foundation (Takutea). Several of the islands are isolated submarine mountains, but those between Aitutaki and Mauke form a distinct chain that trends northwest parallel such as the Austral Group to the southeast (Wood and Hay, 1970).

The Northern Group consist of atolls, with one exception, Nassau that is a sand cay (small island of sand) on a coral reef foundation. These islands are widely scattered and their surrounding bathymetry shows that some are parts of submarine ranges of volcanic

mountains, and others are summits of single volcanic cones rising some 4500 to 6700m above the ocean bed (Wood and Hay, 1970).

The Cook Islands’ climate is tropical and moderated by trade winds. The country experiences two distinct seasons: the dry months from April to November and the wetter humid months from December to March (fig. 3 and table 1). The 1929-92 average rainfall at Rarotonga airport was 2100mm, with a maximum in 1967 of 3000mm and a minimum in 1982 of 1100mm (Clement & Bourget, 1992).

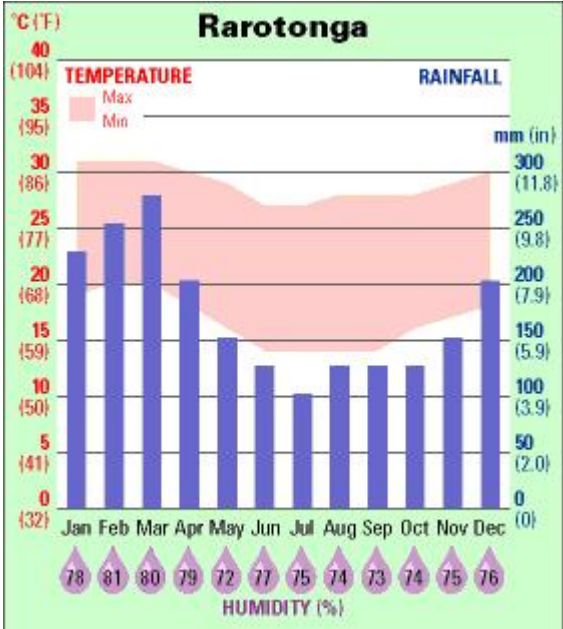


Figure 3: Average climatic information for Rarotonga.

Natural hazards threaten the Cook Islands in the form of cyclones, storm surge, drought, coastal flooding, river flooding, tsunamis, earthquakes and landslides. The biggest natural hazard is from tropical cyclones (typhoons or hurricanes) e.g. Cyclone Heta (category 5) in January 2004 caused widespread damage to infrastructure in the Cook Islands along with Samoa, Tonga and Niue. Drought is linked into the El Nino Southern Oscillation (ENSO) with significant droughts on Rarotonga occurring in 1982, 1987 and 1997-98 (El Niño years). Drought occurs through the lack of, or very low, rainfall during a rainy season (Dec – April). El Niño linked drought is not a nationwide phenomena, the norm is that at the time of an El Niño event the Southern Group of islands suffers drought while the Northern Group has enhanced rainfall. A La Niña event causes the reverse effect.

The Cook Islands’ economy is one of the strongest in the South Pacific. In 2005, the country’s GDP per capita was NZ\$12,878. The Cook Islands’ economy is based on tourism, pearl exports, marine resources, agriculture and offshore banking industries. Tourism remains the country’s highest income earner, followed by the pearl and agriculture sectors. The economy is also supported by foreign aid from New Zealand. Rarotonga is the most developed island and has the highest population. Aitutaki is the second most developed island, mainly through tourism. The other islands suffer greatly through isolation, all of them being 170-1000km from Rarotonga and up to 1100 km away from each other (Evans, 2006).

The Cook Islands sources its potable water supply from two main sources. In the Southern Group of islands which includes the main island of Rarotonga, surface water is sourced from springs and streams within catchments valleys, while in the Northern Group of islands, water is sourced from rainwater and groundwater.

**Table 2: Summary of the main geographic information for the Cook Islands.**

Capital:	Avarua on Rarotonga
Population:	18, 027 (2001)
Land Area:	240 sq. kilometres
Max Height above Sea-level:	652 metres (Te Manga on Rarotonga)
EEZ:	1.8 million sq. kilometres
Rainfall:	Average of 2, 040 mm per annum (see table 1)
Mean Temperature:	24° C
GDP per Capita:	NZ\$12, 878 (2005)
Currency:	New Zealand dollar (NZ\$)
Languages:	English, Maori
Government	Semi-independent country in Free Association with New Zealand
GDP per sector (2005)	Agriculture & fishing – 13%; Services (including tourism) – 63%; Industry – 9% Public administration - 13% Other - 2%
Land use	Permanent crop - 13% Arable – 17% Other - 70%

### 3 Integrated Water Resources Management Situation for the Cook Islands

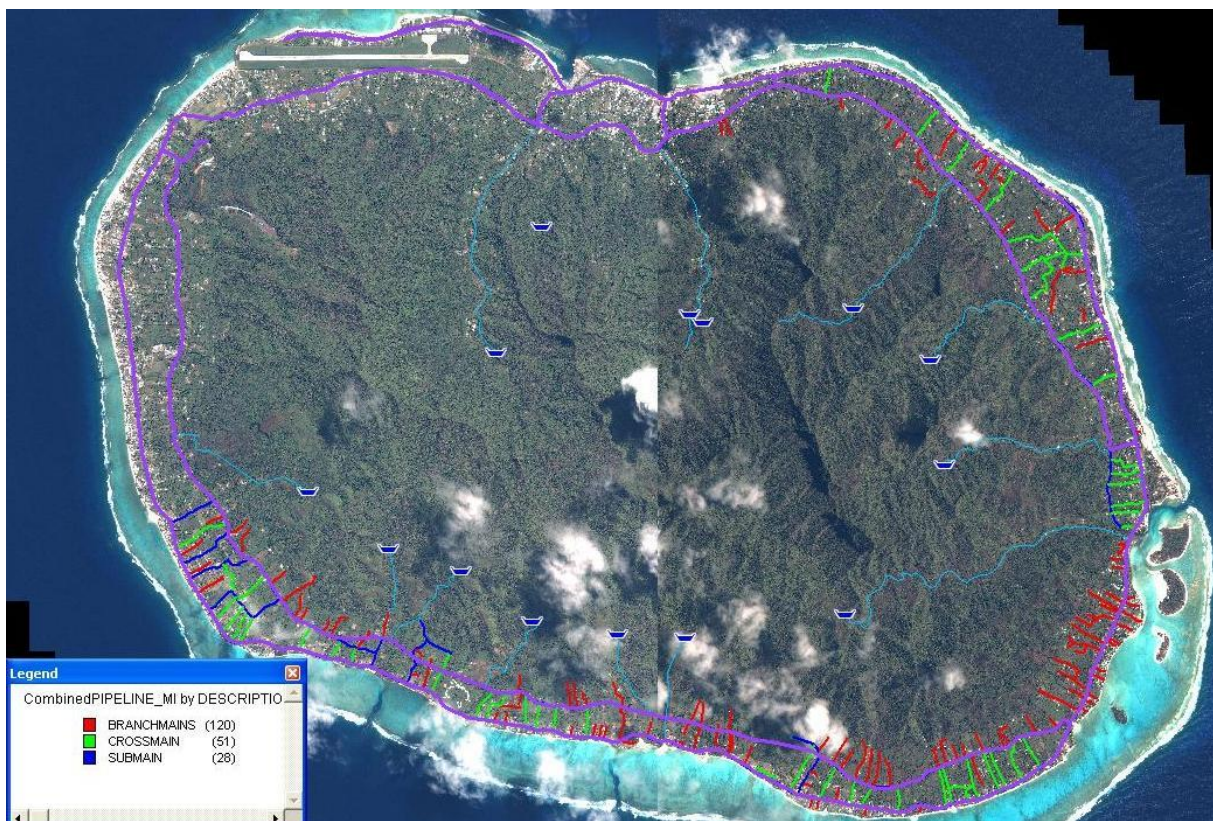
#### 3.1 Water Resources Management

The Cook Islands have a long history of water management. An example is on the island of Mangaia which originally had a water management system based on rank. The island was divided into 6 catchments with a chief at the top of each catchment. A set of dams and terraces controlled the flow of water through the catchment to members of the family. This form of water management was dismantled when missionaries arrived in the 19<sup>th</sup> century and people were encouraged to live on the coastal fringe, but indicates the manner that water management can influence societal structures and vice versa (AusAID, 2004).

##### 3.1.1 Types of freshwater resources

The Cook Islands sources its potable water from two main sources. In the Southern Group of islands which includes the main island of Rarotonga (volcanic origin), surface water is sourced from springs and streams within catchments valleys. In the Northern Group of islands (coral atolls), water is sourced from rainwater and groundwater.

The largest water infrastructure development has taken place on Rarotonga where there is the highest population and greatest knowledge of the water resources. Water from streams on Rarotonga is collected using gravel bed filters and feeds into a gravity driven ring main system that encompasses all of the coastal plain settlements. There are 12 intakes for the ring main, each of which is fed directly into the ring main. A series of cross mains and submains feeds from the ring main to all the households and businesses on the coastal plain (figs 4 & 5).



**Figure 4: Water reticulation system for Rarotonga showing intakes (blue basins) and the ring main (purple). The are with only a ring main has not been upgraded yet (January 2007) at which time all pipelines are GPS located.**



**Figure 5: Enlarged view of the water reticulation system in south-west Rarotonga showing the branch-main (red), sub-main (blue), and cross-main (green) connections running from the ring main (purple).**

A recent AusAID project has provided detailed water resource information for all the outlying islands. This work, carried out by Tony Falkland, details the water resources available, provides water quality assessments and outlines water resource management issues and for each island. It then goes a step further by providing recommendations for immediate, short term and long term improvements to the water supply on each island (e.g. Falkland, 2000 for Mangaia). This is a tremendous resource for the Cook Islands' water resource development.

Desalination and wastewater reuse are not practised in the Cook Islands. The only form of water importation is through bottled drinking water although the main source of this is two bottling plants on Rarotonga (with some additional importation from New Zealand). During drought years (e.g. 1998) water tankers have been used to transport water to hotel complexes from other parts of Rarotonga and some drinking water transported to outlying islands.

A recent NZAID project (2006) has supplied new water tanks to all households on the island of Mangaia. This is in addition to an AusAID funded project to upgrade the reticulated water supply on Mangaia. In this way the island is not dependent on a single water supply source. Other islands have received water tanks as part of a Canadian funded rainwater harvesting project.

### 3.1.2 *Types of freshwater uses*

Like many PIC's, water supply issues are dominant in the management of water resources, and attention generally has focused on the areas of greater population, namely, the high population centres and Rarotonga in particular.

Binnie (1984, 1987) report Rarotonga per capita water consumption figures of approximately 1200 litres per capita per day, which is extremely high when considering a reticulated water supply system. Although Beetham (1988) makes the comparison with Singapore and Auckland ( $\frac{1}{3}$  to  $\frac{1}{4}$  of Rarotonga figures) this not a completely fair comparison as Auckland and Singapore have no significant use of their reticulated water for agriculture. New Zealand's total water consumption is around 1500 litre per capita per day (Taylor & Smith,

1997); the major difference being that in New Zealand water for use in agriculture is supplied separately from domestic water, and the infrastructure cost borne by individual users. It is also worth noting that the 1200 litres per person per day figure includes the very high leakage rates (see below). Once the leakage has been reduced through infrastructural renewal (currently underway) the figure should reduce substantially.

Agriculture, through the watering of small vegetable plots and gardens accounts for the majority of water usage on Rarotonga. Clement & Bourget, (1992) estimate that agriculture could use up to 80% of the water supplied through the Rarotonga reticulation system.

Tourism is the largest “industry”; Clement & Bourget, (1992) estimated that it accounted for 26% of potable water (i.e. discounting agriculture) on Rarotonga. Other industries, such as fish processing and the airport, were estimated to account for 13% of potable water.

### *3.1.3 Majors Issues and Concerns*

Leakage and wastage of reticulated water are major issues for Rarotonga. Binnie (1984) estimated leakage losses at 16% of total demand. A later study in 1985 showed reticulated losses of 40% in Avarua (Binnie, 1985). Clement & Bourget, (1992) repeated the test in 1991 and found leakage and wastage losses as high as 70%. The large-scale infrastructure of old steel and galvanised pipes has caused problems with corrosion and leakage. Replacement of the old pipes by uPVC is in progress to alleviate these problems.

Clement & Bourget, (1992) in a pilot study of water metering in Avarua found that 48% of the consumption was from only 11% of the metered households. Visits to these properties showed poorly maintained home systems including washers worn out and in some cases taps left on overnight. Water wastage is a serious issue for Rarotonga that could be alleviated through water metering and charging directly for water consumed. Studies around the world have shown a drop in water consumption of around 20% when metering and charging are introduced; a significant amount, especially during drought years. There appears to be resistance to a user pays principle for water on Rarotonga but elsewhere in the Cook Islands there is recognition of its importance. An AusAID document on water supply for Mangaia indicates that the Mayor of Mangaia was in favour of paying for water, likening it to electricity (AusAID, 2004).

The reticulation system upgrade currently occurring on Rarotonga should significantly reduce leakage losses which has been the priority of the Ministry of Works, rather than metering and charging (Pers. Comm., B. Paratoki, 2007). The upgrade will also include sector metering so that significant usage and/or loss within pipeline sectors can be detected. This will allow some limited demand management but does not place responsibility down to individuals.

The water user with the highest priority on Rarotonga is tourism. This is achieved through the major hotels being linked directly into the ring main while domestic users take water from submains. Most large hotels have large storage tanks which they fill directly from the ring main. When water pressure is low the major hotels maintain their pressure for longer than domestic users. This arrangement is due to the high water demand from hotels that would drop the water pressure significantly from a submain, to the detriment of neighbours. The consequence, although not necessarily deliberate, is that large tourist hotels have priority to other users during periods of drought.

Overall the quantity of water resource of the Cook Islands could be considered adequate during normal years but stressed during drought years. The reliance on rainfall storage and streams (without significant storage) makes this likely to continue into the future. It could be improved through either demand management (e.g. metering and charging) or provision of extra storage (e.g. storage dams or groundwater).

Septic tank systems are widely used throughout Rarotonga, comprising of a septic tank and a soakaway. The septic sludge (septage) is collected for treatment at a centralised plant. Elsewhere in the Cook Islands septage is spread on vacant land or on fields at the request of

farmers. There is only one reticulated sewerage system on Rarotonga, which was installed in the early 1950s following relocation of houses to accommodate the airport. This sewer system collects sewage from the residents and is fed into septic tanks for treatment. The septic tanks were replaced in 1994 with an Enviroflow proprietary sewage treatment plant. However the plant was neither maintained nor operated correctly, and fell into disuse. The raw sewage currently bypasses the plant and flows into the sea. Water quality issues from septic tank leakage and nutrient laden groundwater reaching the lagoon are major issues that have been linked into significant health concerns, e.g. Takitumu Irritant Syndrome in 2003-04 which is believed to be from algal blooms in the nutrient rich lagoon waters (Hajkovicz & Okotai, 2005)

### *3.1.4 Measures to manage impacts and concerns (IWRM approaches)*

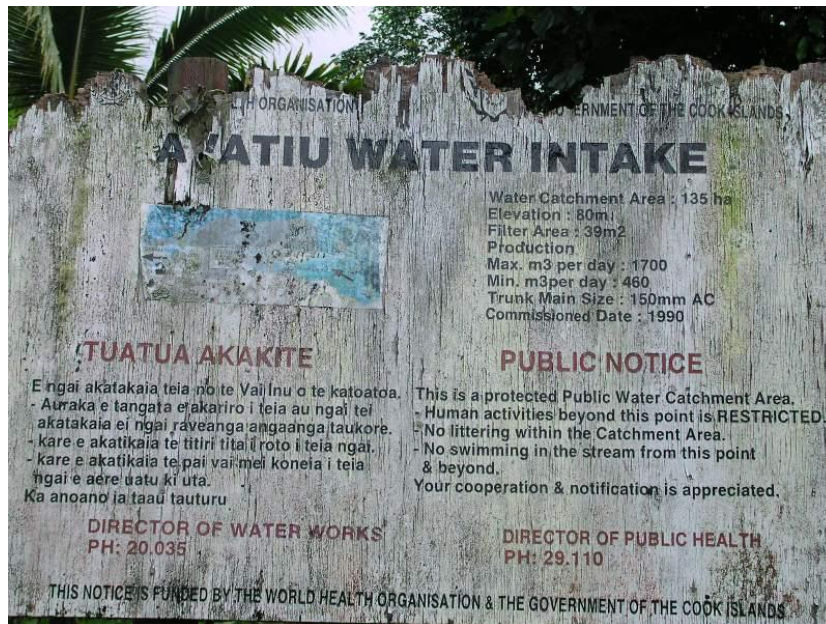
Rarotonga is the only island in the Cook Islands with a hydrometric network. This was established in 1999 with assistance from the National Institute of Water and Atmospheric Research Ltd (NIWA) and funding from the New Zealand Overseas Development Agency. This hydrometric network gives an ability to understand the amount of water available for reticulated supply and as longer term records are established, to learn water management lessons from previous years.

The 5-year hydrometric network project also included data collection and training of staff (Mason, 1999; 2005). Since 1999 Rarotonga has had 3 continuous recording sites at the site of water intakes for the reticulation system (Avatiu in the North, Matavera in the East, and Totokoitu in the South). At each of the weir sites there is a rain gauge installed nearby. In addition to this there is an automated rain gauge installed on the top of Te Kou, one of the Rarotonga mountain tops. Both rain gauges and weirs have loggers attached which record at 15 minute intervals. The weir sites are gauged approximately every 3 months to determine and accurate rating curve (relating water level to streamflow). Preliminary analysis of the rainfall record from June 2005 until June 2006 suggests that Te Kou (representing the upper catchment) collected 20% more rainfall than the gauge at Avatiu, indicating that volumetric calculations need to consider rainfall variation throughout the catchment area. The only long term rainfall record is from the meteorological station at Rarotonga Airport.

Water quality monitoring is carried out by the Ministry of Works (MoW) at their intake sites and the Department of Public Health within the reticulated water system and in the lagoon. The MoW do not have a systematic water quality monitoring network. When they carry out monitoring (approximately quarterly) it is for Nitrate, Phosphate, Iron, Aluminium, Hardness, pH, Coliforms and E. Coli. An attempt was made to have regular water samples sent from the outer islands for testing in Rarotonga but this has not been successful (no samples had been received by January 2007).

On the islands that depend on rainfall for potable supply water conservation is a fact of life and practiced constantly. On Rarotonga water conservation is not widely practiced and there are many wasteful water uses and misuses, e.g. leaks from taps, taps left running constantly. There are no continuous water conservation policies and no particular incentive to conserve water except from a social and/or environmental conscience. During periods of drought public awareness campaigns are carried out by the Ministry of Works to limit consumption. On the rainfall dependent islands the incentives for water conservation are self evident.

The MoW has prepared maps of Rarotonga delimiting the catchment areas above each water supply intake. This was done in preparation for legislation formally setting aside these areas as water supply reserves. The legislation has never eventuated (to January 2007) so there are currently informal water supply reserves (fig. 6). These informal reserves have no legal standing although they are taken seriously by the local population. It is important to note that the restricted activities do not include land use; the land owners and land users within the catchment area have no restrictions placed on them. In practice the majority of the catchment area is covered in forest although there is more pressure for taro growing further up the valleys as the coastal plain is taken for housing and tourism.



**Figure 6: Sign below the Avatiu water intake (at start of popular cross island trek) detailing the informal water reserve.**

On the coastal plain (below the water intakes) there are no buffer areas surrounding rivers and streams. A major problem arises due to pigs, goats and poultry being kept immediately adjacent to rivers and their excreted waste washing into streams during rainfall. This causes a major eutrophication problem for the receiving lagoon and potential health risks for lagoon users. A NZAID project (CIMRIS) is addressing this area in the Takitumu region through working with pig farmers to reduce the input of contaminated water into the lagoon.

A recently started NZAID project has set up a National Water Safety committee to implement a national water safety plan. This is coordinated by MoW and has the primary focus on ensuring a surety of supply for Rarotonga. It is envisaged that in future more emphasis will be placed on other islands.

The Cook Islands is being used as a case study in an NZAID-funded regional programme on water demand management run by SOPAC. This project covers cost-reflective pricing; the value of metering; reticulation leakage detection and repair programs and pressure reduction; and communication strategies, including community education.



## **3.2 Island Vulnerability**

### **3.2.1 Types of disasters with major issues and concerns**

The Cook Islands, as with many PICs are vulnerable to natural disasters and possible future climate change affecting infrastructure and tourism revenue. The largest natural disaster risk is through tropical cyclones. Between 4 February and 8 March 2005, the Cook Islands experienced five damaging cyclones within a period of five weeks, four of which were assigned a severity rating of Category 5 and caused damage to homes and essential public infrastructure. Damage done during cyclones is caused by high winds and flooding (largely sea flooding onto land during storm surges). Stream and river flooding has caused damage to water reticulation infrastructure but this is reasonably quickly rectified. The simple nature of the reticulated supply intake system makes for relatively little damage. The reliance on gravity feeds is also beneficial as there is no dependence on electricity supply which could be damaged during a cyclone.

Another issue for water supply on Rarotonga is the sediment input into the reticulation system during high flows (not necessarily from cyclones). The current filters are easily blocked by excess sediment levels which results in brown and murky water entering the reticulation system. The Water Works Division of the Ministry of Works has plans to replace the current intake filters on Rarotonga with a series of settling tanks and new filters.

Drought, although a relatively infrequent occurrence, places considerable stress on the water resources of Rarotonga and the other islands. The islands that rely on rainwater tend to be well set up for water conservation, although a lack of rainfall during drought has been known to result in drinking water importation. Recent NZAID, AUSAID and Canadian funded projects on rain water harvesting in the outer islands have provided modern large size tanks for households.

The only historic data on incidences of droughts and floods is the Rarotonga rainfall record. The hydrometric network on Rarotonga has not been operational long enough to provide hydrological analysis of droughts and floods. The occurrence of tropical cyclones tend to be more frequent during an El Niño event, when warmer than normal sea surface temperatures occur between latitudes 10 and 15 degrees South (°S) and there is an eastward migration of the South Pacific Convergence Zone (SPCZ) in the vicinity of the Cook Islands and French Polynesia. During an El Niño event the southern Cook Islands experience a reduction in rainfall, to as little as 60% of normal, while in the northern Cook Islands rainfall increases to as much as 300% above normal (ADB, 2006). This can be seen in the number of low rainfall months recorded in a year and decade at Rarotonga airport (fig. 7). Most of the low rainfall months are concentrated in the latter part of the period of observation, indicating that the frequency of drought has increased since the 1930s. The years with a high number of months below the five percentile coincide with El Niño events (ADB, 2006).

Apart from the sewerage scheme near the Rarotonga airport the pollution problems are by and large from diffuse sources and difficult to summarise as individual disasters. There is a definite water pollution concern, particularly in the lagoon.

On the outer islands that use groundwater, normally from freshwater lenses within the atoll, there have been reported cases of saltwater intrusion (e.g. Mitiaro and Aitutaki) but these have not been systematically dealt with. It is unclear whether this is an increasing problem.

There have been no particular problems with landslides or other sediment generating mechanisms caused by storm events. This is by and large due to the unaltered nature of island interiors (e.g. forest covered). The authors could find no evidence that sea level rise or storm surges have had an impact on aquifers. This may become a problem on low lying outer islands dependent on groundwater. The data on mean sea level at Rarotonga show no particular rising trends (fig. 8). There is large inter-annual variability in sea level. The exceptionally high sea levels shown in the figure are all associated with the occurrence of tropical cyclones (ADB, 2006).

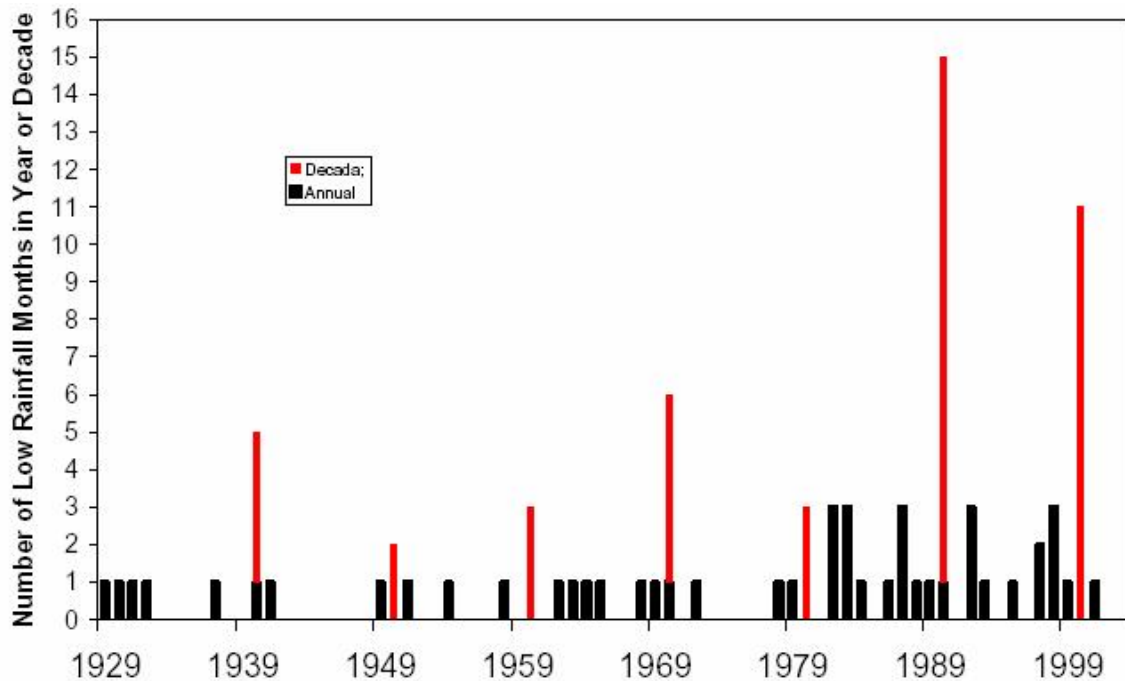


Figure 7: Daily Number of low rainfall months at Rarotonga airport (Source: ADB 2006)

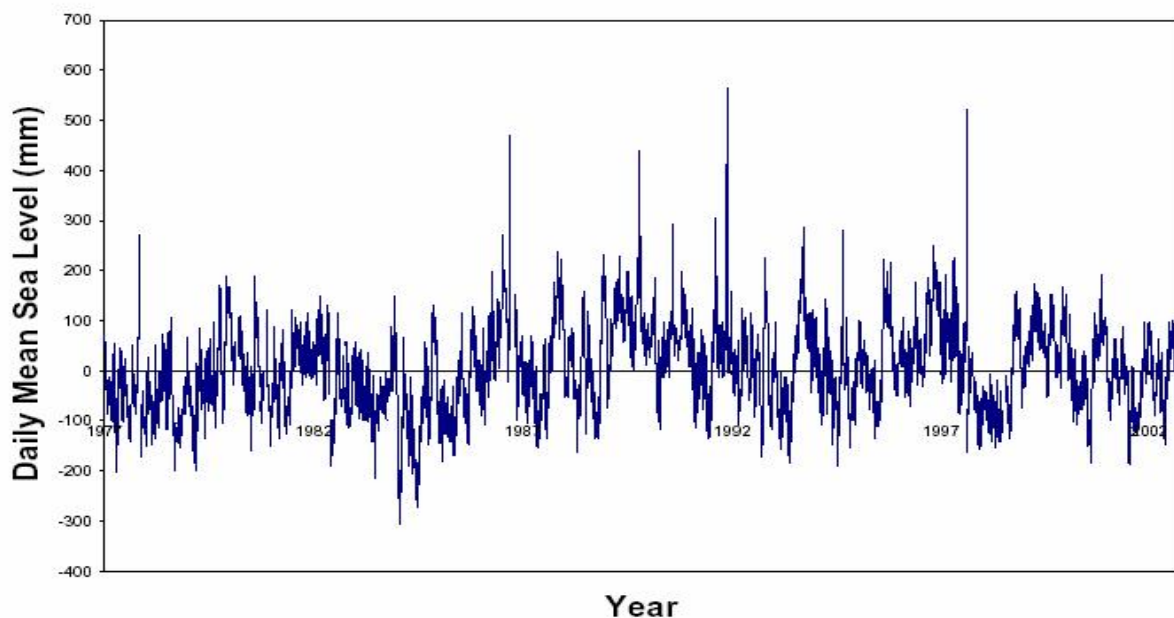


Figure 8: Daily Mean Values of Sea Level for Rarotonga (1977 to 2002) (Source: ADB 2006.)

### 3.2.2 Measures to manage impacts and concerns (IWRM approaches)

Climate scenarios, based upon Global Circulation Models, suggest that in this region of the Pacific extreme events will increase, along with significant impacts upon the people and their environment (see table 3). For example, from table 3 it can be seen that daily rainfall totals have a current recurrence interval of once in every 38 years; by the year 2100 this may have

dropped to once in every 11 years. This increase in frequency of major rainfall events could have severe impacts on infrastructure in the Cook Islands.

**Table 3: Predicted specific extreme events for Rarotonga (source: ADB, 2006).  
RP=return period; LO = Likelihood of occurrence (probability).**

Event	Present		2025		2050		2100	
	RP	LO	RP	LO	RP	LO	RP	LO
Rainfall – Daily Total at least 300 mm	38	0.03	26	.04	19	0.05	11	0.09
Rainfall – Hourly Total at least 100 mm	91	0.01	57	0.02	25	0.04	13	0.08
Height of Sea Surge – Extreme at least 6 m above mean sea level	10	0.10	8	0.13	7	0.15	5	0.21
Wind Gust - Extreme at least 42 m/sec	29	0.03	16	0.06	14	0.07		
Maximum Temperature – Daily at least 34 °C	29	0.03	14	0.07	9	0.12	3	0.29

<sup>1</sup> A likelihood of 0 equals zero chance while a likelihood of 1 equates to a statistical certainty that the event will occur within a year.

The Intergovernmental Panel on Climate Change (IPCC) in its Fourth Assessment Report (2003) outlined that for small island states in the Pacific region, the following scenarios could be identified with some confidence.

- (i) **Rise in sea level.** Sea level may rise 0.5metre (in a best-guess scenario) to 1metre (in a worst case scenario) by 2100.
- (ii) **Increase in surface air temperature.** Air temperature could increase 1.6°-3.4°C by 2100
- (iii) **Changes in rainfall.** Rainfall could either rise or fall by about 20% from current rates in 2100 leading to more intense floods or droughts.
- (iv) **Increased frequency of more El-Niño like conditions.** The balance of evidence indicates that El Niño conditions may occur more frequently, leading to higher rainfall in the central Pacific and northern Polynesia.
- (v) **Increased intensity of cyclones.** Cyclones may become more intense in the future, with wind speeds increasing by as much as 20%; it is unknown whether cyclones will become more frequent.

In July 2005, the Asian Development Bank (ADB) approved a loan for a Cyclone Emergency Assistance (CEA) Project for the sum of US\$2.85 million. The loan was to mitigate the social and economic impact of the cyclone damage by providing the necessary concessional resources to assist the Government implement a comprehensive recovery program. A major focus within the CEA work is on disaster planning and mitigation. The objectives of the CEA project are:

1. To strengthen disaster and recovery management, including damage assessment, aid management and operational coordination;
2. To establish financial controls required to ensure good governance in the management of the rapid disbursement of recovery funds;
3. To develop a far-reaching and a systematic approach to mitigating the country's vulnerability to adverse weather conditions;

4. To establish institutions and environmentally sustainable infrastructure with capacity to impede the reoccurrence of a disaster with harmful effects on communities and key infrastructure.

It is the third of these objectives that fits closest with an IWRM approach in the Cook Islands; this includes an assessment on the affects of climate change on the Cook Islands.

### 3.3 Awareness

The Cook Islands Environment Act of 2003 has raised the profile of the environment and environmental services. Health concerns such as fish poisonings in Titikaveka lagoon and Takitumu district airborne irritant syndrome in 2004 (Hall et al, 2006) have highlighted the fragile nature of the Rarotonga environment and the large impact that humans are making. The recently launched National Sustainable Development Plan for the Cook Islands has set as its primary strategic objective: *"to build a sustainable future that meets our economic and social needs without compromising prudent economic management, environmental integrity, social stability and the needs of future generations"* (p10 Te Kaveinga Nui - National Sustainable Development Plan 2007-2010). There is a gradual political will to improve water resource management in an integrated sense but it is not at such a stage as to be top of a political agenda.

#### 3.3.1 Type of awareness campaigns, advocacy initiatives are currently being undertaken in the area of water resources management

One of the main projects from the International Waters Project (IWP) in the Cook Islands was the Takuvaine Water Catchment Project. This was a community based initiative (co-ordinated by the Environment Service) to work with land owners and land users in an important water catchment area for the Rarotonga water supply. The Takuvaine project was set up as a demonstration project to protect the water supplied from the Takuvaine water catchment and intake area (see figure 9). The major output from the project has been a catchment management plan derived through extensive community and landowner consultation. Included in the management plan are the rules for a ra'ui (prohibition of certain practises) within the catchment that will soon become law. The Takuvaine project has been an important IWRM initiative, raising awareness of the links between land use practises and water quality in the reticulated supply and then setting out a plan to change practises.



Figure 9: Signs at road entrance to Takuvaine.

### *3.3.2 Major Issues and Concerns*

Despite most Cook Islanders having a close association with the land there appears to be a poor association between land management and freshwater and coastal water quality. The Takuvaine project demonstrated that the linkage could be made but it was not intuitive to the land users and a considerable amount of time had to be spent persuading land users of their impact on water quality.

A second major issue is the waste water treatment using septic tank systems. At present all issues concerning septic tanks (apart from treatment of septage) is administered by the Department of Health. This administrative structure puts the major emphasis on health risks associated with faecal contamination with little emphasis on the leaching of nutrients (particularly nitrogen and phosphorus) from septic tanks into the shallow groundwater and then out to the lagoon. Hall et al., (2006) have shown that nutrient levels in the Titikaveka lagoon (southern Rarotonga) were at higher values than recommended for the healthy growth of coral reefs. The likely source of these elevated nutrient levels is groundwater containing leachate from septic tanks (n.b. this is surmised, the authors have no scientific evidence of this at this stage). It is important that there is a general awareness that septic tanks can contribute extra nutrients to receiving waters (i.e. groundwater and then the lagoon), thereby creating a secondary pollution problem; it is not just a concern from faecal pollution.

### *3.3.3 Measures to manage impacts and concerns (IWRM approaches)*

The Takuvaine project was successful in implementing a ra'ui and management plan for the Takuvaine catchment through a mixture of community involvement and targeting the land-owners as well as land users. The distinction between these two groups is an important cultural context for the Cook Islands. Another success of the Takuvaine project was using community champions to promote the key messages (e.g. Mama Terii Simpson, see details at: [http://www.sprep.org/iwp/IWPChamp/champ\\_ind.htm](http://www.sprep.org/iwp/IWPChamp/champ_ind.htm)). Overall awareness of the integrated nature of land, freshwater and the marine environments is low and projects such as Takuvaine need publicity and replication for the full effect to be felt.

### 3.4 Technology

The majority of islands in the Southern Group maintain a reticulated water supply from various sources. In the Northern Group there is a total reliance on rain water (table 4). There is no treatment of drinking water apart from simple filtering at source. There are problems with coliforms in the drinking water where surface water is sourced (Rarotonga and Mangaia); a result of land use practices in the water catchment area. The presence of coliforms in the water supply results in advice from Government authorities that drinking water should be boiled or bought separately (e.g. in plastic containers). This advice is general; i.e. it does not vary dependent on a monitoring programme that detects coliforms at a particular time.

**Table 4: Water supply systems for all of the Cook Islands.**

Island	Area (km <sup>2</sup> )	Water supply system	Water quality
SOUTHERN GROUP			
Rarotonga	67	Reticulated supply from stream sources	Coliform concerns
Mangaia	52	Reticulated from stream and boreholes	Coliform concerns
Mauke	18	Reticulated from boreholes	Good quality (no saline intrusion)
Atiu	27	Reticulated from wells and independent household rainwater harvesting (old boreholes redundant)	Good quality (no saline intrusion)
Mitiaro	22	Reticulated from cave sources	Salinity problem
Aitutaki	18	Reticulated from galleries	Salinity problem (variable)
Manu'ae	6	n/a	n/a
Takutea	1.3	n/a	n/a
NORTHERN GROUP			
Penrhyn	10	Rainwater	
Manihiki	5	Rainwater	
Rakahanga	4	Rainwater	
Pukapuka	1.3	Rainwater	
Nassau	1.3	Rainwater	
Suwarrow	0.4	Shallow well	
Palmerston	2	Rainwater	

#### 3.4.1 Types of water supply systems

The system of water reticulation on Rarotonga is a gravity fed distribution system, taking essentially untreated water from 12 streams and feeding into an extensive pipe network (see fig.4). Almost all residences on Rarotonga (rural and urban although it is difficult to distinguish the two) are connected to the water reticulation system. The exception is for residences at an elevation too high for gravity feeding through the reticulated supply (approx 30m above msl); these houses are reliant on rainwater. Rarotonga is currently engaged in a

large-scale refurbishment of its water reticulation pipe network (funding from Cook Islands Government); this will be around 70% completed by the end of 2007.

Outer islands with a reticulated system (see table 4) have similar systems with different sources. Where rainwater is used this is almost always at the individual household scale.

### *3.4.2 Types of wastewater/sanitation systems*

All wastewater throughout the Cook Islands is treated through septic tanks or other soakage systems. There is one reticulated sewerage system on Rarotonga that feeds into a centralised septic tank. The septic tank is no longer functional although the reticulated sewerage network is still accepting waste. Consequently untreated sewage is being discharged into the lagoon from this system. Elsewhere in the Cook Islands there is a variable standard of septic tanks, ranging from simple soakage pits (long drops) to double or triple tank systems. Tile drainage from the tanks is rarely practised. Hotels, even resorts of large size, also use septic tank systems. On Rarotonga liquid waste from septic tanks (septage) is collected and transferred to a single treatment facility on the south-west of the island. This is relatively new treatment facility (constructed 2004??), prior to this septage was spread onto agricultural land (as is practised on outer islands).

### *3.4.3 Major Issues and Concerns*

There are five major issues concerning potable supply and waste water treatment in the Cook Islands.

1. The current reticulated water supply systems serves a dual purpose; supplying households with water for drinking, washing etc. and supplying water for agricultural gardens (the major water use by volume). The water quality for washing and agricultural purposes is excellent but is not guaranteed of being up to potable standards (largely through coliform contamination). Considerable investment in filtering and possibly treatment would be required to bring it up to potable standards. In doing this you would have to ask whether it is worthwhile if it remains a dual supply (i.e. you would be supplying very clean and expensive water for irrigating gardens and washing).
2. Rarotonga and Mangaia have an issue with sediment being transferred into the reticulation system following heavy rain. This leads to discoloration and customer dissatisfaction. Ministry of Works have plans for settling tanks and storage at each of their intakes to lessen this impact.
3. Various agencies currently monitor water quality on Rarotonga (and the outer islands) but there is little coordination between the agencies. On Rarotonga the Ministry of Public Health monitors water quality through the reticulated supply. The Ministry of Works monitors water quality at its sources for the reticulated supply. The Ministry of Marine Resources monitors water quality in the lagoon and in conjunction with the Environment Service monitors some streams. None of these monitoring systems are coordinated, nor it seems are the results available for the public to make easy assessment of water quality. In January 2007 several candidates for a bi-election on Rarotonga expressed a desire for a co-ordinated water quality monitoring service. This is a sensible suggestion but thought also needs to be given as to how the information is disseminated to the public.
4. There is a lack of ownership of waste treatment by government agencies. The central septage treatment plant is owned and operated by the Ministry of Works and functions adequately. The Ministry of Public Health administers septic tanks, but understandably this is from a health perspective rather than an environmental performance standard. This means there is no particular drive for a centralised waste treatment facility or high quality septic tank technology, which would be likely to considerably improve water quality in the lagoon and streams, as there is no agency



with this type of remit. There is little doubt that the poor treatment of waste presents a significant threat to ecosystem health

5. During periods of drought there have been water shortages on Rarotonga and other islands. There are several options for minimising this risk: minimising leakage in the reticulation system (currently being addressed for Rarotonga); demand management to lessen demand and wastage; investigation of groundwater supplement of the reticulated supply during times when the surface supply cannot match demand.

#### *3.4.4 Measures to manage impacts and concerns (IWRM approaches)*

The Ministry of Works has excellent GIS data on the water reticulation system, source areas (including catchment areas) and intakes for Rarotonga and also many of the outlying islands. The current water reticulation upgrade on Rarotonga has given an excellent opportunity to gather information (via GPS) on the network. This is now stored on a comprehensive GIS system.

The NZAID funded CIMRIS project on Rarotonga is addressing some water quality issues, particularly those concerning pig farming and piggery waste entering the lagoon via streams.

There are guidelines available for the construction of septic tanks in new houses but there is no monitoring of performance of old septic tanks or drive to improve old septic tank systems.

Water conservation measures are only implemented during periods of drought when either rainwater harvesting is ineffective or stream sources start to produce less. There has been no attempt to measure the effectiveness of these schemes and there is no co-ordinated approach to running them.

### **3.5 Institutional Arrangements**

#### **3.5.1 Types of Institutional Arrangements**

The responsibility for water management, including regulation, falls under the auspices of the Ministry of Works (MoW), but other agencies also have a key interest. These include the Environment Service, Cook Islands Investment Corporation, Ministry and Finance and Economic Management, Ministry of Marine Resources, and Ministry of Health. The Department of Water Works within MoW is responsible for managing water supply in Rarotonga in consultation with island councils. Community meetings have indicated that a significant proportion of the general public has a reasonable degree of awareness of the need to improve the water supply service and quality of water, and that a high proportion of residents buy drinking water.

The common theme in reviewing the water sector in the Cook Islands is that water management and water sector policy generally is not advanced. There is no single national water management legislation in place except for scattered provisions that address the supply of water to the public, e.g. Rarotonga Waterworks Ordinance of 1960. In the absence of a national legislative framework, water supply projects especially on the outer islands have been historically implemented without full assessment of their viability, sustainability and impact on the local community and environment. There is no national policy on water, sewerage or sanitation and there is no effective regulatory framework in which the public utilities operate to control and manage water. In this vacuum government departments are unsure of each others roles and there is possible duplication and/or omission of roles.

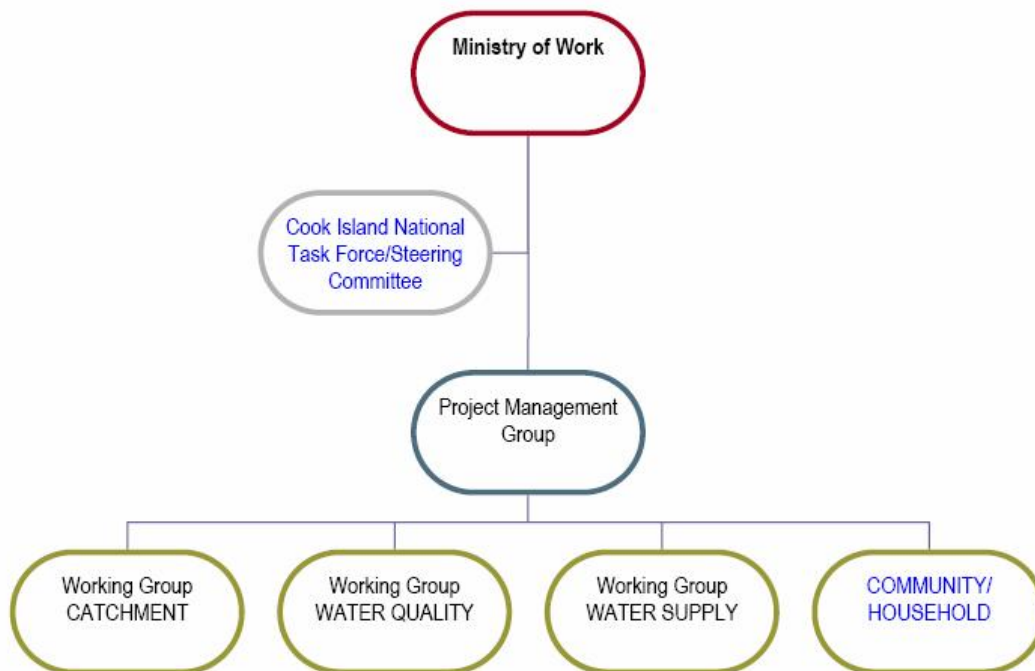
There is no commercialisation within the water sector – water is provided free in Rarotonga – and there is generally a lack of capacity including human and technical resources in the water sector, both government and private sector.

The operation of water supply facilities in the Outer Islands is now subsidised by the National Government, with any consultation regarding water supply generally channelled from the respective Island Secretary. Government priorities are attempting to redress past socio economic imbalances within the Outer islands with initiatives based on equity and the alleviation of poorer standards, which help to justify strengthened and cooperative efforts by aid funding agencies.

Positive changes in governance arrangements are in place – for example, the devolution of responsibility from central government to island councils such as the island Council of Aitutaki where Mayors have been elected to allow communities to have a greater say and responsibility in managing local affairs. Furthermore, there is greater awareness of the fragility of the island system and the interdependence between urban and rural land use, water supply, health and environmental issues. This includes the impact of wastewater at the household and island level.

In Rarotonga, for example, a Catchment Protection Committee (Takuvaione) has been established to promote awareness of the importance of land use activities in the catchments and the effects on water quality and environmental health downstream (see section 3.3).

A Water Safety Committee (WSC) has recently (2006) been set up with NZAID funding and the involvement of AUSAID and WHO. The objective of the WSC was initially to ensure sustainability of water supply on Rarotonga. This has now been widened to a national basis to include the outlying islands, although there is an initial emphasis on working on Rarotonga. The committee is structured along IWRM lines with the recognition of the interdependence of land use, water quality, water supply and community liaison (figure 10). In order to minimise duplication of roles it is recommended that the WSC forms the IWRM committee used in any GEF project.



**Figure 10: Structure of the Cook Islands Water Safety Plan committee.**

### 3.5.2 *Majors Issues and Concerns*

The largest institutional issue for water management in the Cook Islands is the lack of an overarching legal framework and strategy for water resource management. The lack of this framework restricts the ability of different agencies to partake in integrated water resource management as they are unsure of their statutory role and frequently appear distrustful of the motivation behind integration.

### 3.5.3 *Measures to manage impacts and concerns (IWRM approaches)*

The only current cross institutional arrangement that links closely to IWRM principles is the Water safety Committee (figure 10). This has been set up for a specific water supply issue but offers a structure for future IWRM institutional arrangements. This is why the WSC has been used as the consultative body for the Cook Islands Hot Spot Analysis for the GEF application. Apart from the WSC there are no current IWRM initiatives on institutional arrangements in the Cook Islands, although government departments do work together on certain projects (e.g. Departments of Marine Resources and Health in CIMRIS).

Under the International Water Project (IWP) an initial draft of water management legislation has been started. There is a desire amongst MoW staff for this legislation to enable new financing arrangements for water supply (i.e. separate from central government finances). Similarly this could include different financing for waste disposal and water quality management in general. The legislation work was not part of the overall IWP and has not been formally taken up for consultation and decision making. It would require further work before these could be done.

## **3.6 Financing**

### **3.6.1 Types of Financing Arrangements**

Water supply in the Cook Islands is either funded centrally (where there is a reticulated system) or privately (where there is rainwater collection). There is no charging for water through the reticulated system and all the Ministry of Works budget comes directly from central government. Waste water treatment is a private concern, with septic tank infrastructure and septage removal being paid for privately. The septage treatment plant on Rarotonga is run by the Ministry of Works from central funding.

At present there is no legislative framework present to allow for charging for water supply or waste water treatment (whether by demand or cost recovery). This is a serious barrier to developing the infrastructure as no part of the Ministry of Works budget is separate from normal government budgetary constraints.

### **3.6.2 Major Issues and Concerns**

With water supply expenditure being part of normal Government budgetary processes there is risk of important infrastructural requirements being delayed due to budgetary constraints. A water levy system (whether by volume or connection) would allow more certainty in expenditure plans and greater infrastructural planning.

### **3.6.3 Measures to manage impacts and concerns (IWRM approaches)**

As described in section 3.5.3 a start has been made to having water management legislation but this requires considerable further work before being put forward for political and public consultation. This may allow for different financing arrangements than are currently in place.

The other IWRM approach is through the demand management project being carried out by SOPAC (see section 3.1.4). The information from this project should provide information that can be used to propose new financing arrangements.

## 4 Linkages to other areas

### 4.1 Land use and Agriculture

Cook Islands agriculture has gone through a number of changes in recent years, following primarily market based prices in their export markets, such as Australia and New Zealand. This has seen a major decline in citrus and pineapple production and a shift away from full time agriculture into part-time farming. It is estimated that 85-90% of farmers on Rarotonga are part-time and the majority of full time farmers are over 50 years old (Pers. Comm. W. Wigmore, 2007). Recent market opportunities in SE Asia, including Japan and China, the United States, and Europe, have highlighted additional opportunity to the agricultural sector. Current exports are based around Pawpaw and Chilli to New Zealand and Maire (*Alyxia elliptica*) to Hawai'i. Although significant in the gross domestic product figures the amount of foreign exchange earned through agriculture is very low; estimated at \$0.5-1M per year (Pers. Comm. W. Wigmore, 2007). While Rarotonga's previously strong agricultural sector continues to decline in the face of increased tourism and residential development, a shift toward focused agricultural development on the southern group of islands outside of Aitutaki and Rarotonga, has taken place. This is a deliberate policy of the Ministry of Agriculture; to shift agricultural to smaller islands to relieve landuse pressure on Rarotonga and Aitutaki (Pers. Comm. W. Wigmore, 2007).

Water is a major component of agriculture in the Cook Islands, particularly in the growth of vegetables (e.g. tomatoes, corn, and peppers) and taro. As detailed earlier the water demand figure of 1200 litres per person per day is largely through using reticulated water for irrigation. The majority of agriculture is practised at a small scale (0.1 to 1ha); a scale that in other countries might be considered large gardens (figure 11).



**Figure 11: Small plot on Rarotonga growing taro (dryland), cassava and other crops.**

The Cook Islands is one of the few places in the Pacific where taro is grown in a wetland environment (fig. 12). Taro is also grown on dry land but there is a taste preference for the wetland taro. The growth of wetland taro high in valleys poses a problem for the reticulated supply source protection, e.g. the taro shown in fig. 12 is above the Takuvaine water supply intake. Sediment generation and human influence on the water from taro cultivation is a serious issue for water supply. The IWP Takuvaine Watershed project has worked with

stakeholders, landowners and land users to provide a series of guidelines on what can and can't be done in the Takuvaine valley (Rongo, 2006, see section 3.3).



**Figure 12: Taro growing in a wetland created by diverting part of a stream channel through a series of terraces. Takuvaine Valley, Rarotonga.**

Another major agricultural water user is pig farming. There are numerous pig farms where up to 100 pigs are housed in pens and water is used to wash the pens clean (figs. 13 and 14). Many of these piggeries have been deliberately placed near streams to allow rapid removal of contaminants. This presents a classic IWRM issue: high water use and the contribution of animal waste to the receiving waters (stream and lagoon).

**Figure 13: Intensive piggery on Rarotonga (source: Evans, 2005)**

**Figure 14: Waste disposal from piggery on Rarotonga (source: Evans, 2005)**

There is a major issue with agriculture concerning land tenure. Under Cook Island law land is “owned” by families who distribute the right to use the land. Although the land has titled ownership it cannot be sold, only leased to other users. The normal length of lease is 60 years. However, land is normally only leased for occupation or development. Agricultural land use is not considered full occupation; therefore the agricultural land use is often on an informal basis, rather than a formal lease. This creates a problem for an agricultural investor: why spend money developing infrastructure (e.g. a separate irrigation supply and/or smart irrigation systems) when there is no guarantee of land tenure? The lack of security of land tenure discourages agricultural investment that could be beneficial to water resource management and the environment in general.

Deforestation is not a major issue in the Cook Islands, the majority of the uplands are still forested and likely to remain so. Sediment derived from taro plantations is mostly within valleys away from the coastal plain.

Although agriculture presents problems for water resources, particularly through high water demand and piggery runoff the major land use and water quality concern is from poorly functioning septic tanks and even for the best tanks the input of nutrients into the groundwater which will be moving into the lagoon. The level of nutrients in groundwater and the rate of movement of groundwater through the coastal plain are currently unknown.

## **4.2 Habitats and Ecosystems**

In the Cook Islands there are three reserves created for habitat protection and biodiversity reasons. In the South of Rarotonga a 155 ha reserve of upland forest, scrub and fernland was established in 1996 to protect the habitat of the endangered Kakerori (Rarotogan fly catcher). This was set up by land owners and local Ariki (chiefs) with assistance from the National Environment Service. Within the reserve there are restrictions on the type of activities allowed and only limited access is allowed. In 1989 there were only 20 Kakerori left, by 2003 this had increased to 300, largely through the reserve and the transfer of some birds to Atiu which is free of rats (a major predator).

Suvarrow, in the Northern Cook Island group was declared a National Heritage Park in 2002. It is a breeding ground for rare species of turtles, sea birds and crabs. The single resident listed in table 1 is a warden, present for most of the year (except the cyclone season). Manuae, an uninhabited island in the Southern group, is also an important seabird and turtle breeding ground although it does not have reserve status. Takutea, in the Southern Group is a sanctuary for sea birds, including frigates and tropicbirds.

Aside from the reserves and sanctuaries described above the largest threat to an ecosystem in the Cook Islands is the coral reef and lagoon system surrounding much of Rarotonga. Development on the island has lead to increased sediment and nutrients entering the lagoon system, causing damage to the corals and the lagoon. Water quality analysis in Titikaveka lagoon (southern Rarotonga) showed that at all sites some water quality parameters were at higher values than recommended for the healthy growth of coral reefs (Hall et al, 2006). The source of these nutrients has not been precisely located but is most probably from septic tank waste seeping into groundwater. A major issue is to establish what level of nutrients there is in groundwater, how quickly that groundwater is moving out into the lagoon, what level of nutrient is sustainable in the lagoon system, and is this level of nutrients attainable with the current septic tank system?



### **4.3 Health and Hygiene**

The Ministry of Health periodically carries out water monitoring for microbiological content (coliform) in the water supplies. The water supplies in Rarotonga and Outer islands are neither properly filtered nor disinfected. There are coarse filters at some intakes. During the wet season the water supply is often discoloured and turbid and contains silt, sediment and debris. The water system at present is vulnerable to any form of disaster, such as contamination from agriculture chemicals, sanitation contamination and saltwater intrusion.

The Ministry of Marine Resources carries out water quality monitoring of lagoon sites in Rarotonga and Aitutaki to establish health risks for bathing. They also monitor water quality in Manihiki and Penrhyn to assist black pearl farmers (a major Cook Island export). The report on economic valuation of pollution to the Cook Islands (Hajkowicz & Okotai, 2005) highlights the high risk to tourism from pollution in the lagoon. A major draw card for tourists, especially to Rarotonga and Aitutaki, is the pure waters and a “beach holiday”. It is extremely important for the Cook Islands economy that water pollution does not become a major issue stopping tourists visit.

The Takitumu Irritant Syndrome in 2003-04 caused itchininess or rash on the skin, running or bleeding nose, watery/stinging eyes and respiratory difficulties (Hajkowicz & Okotai, 2005). This is consistent with response to naturally occurring toxins associated with algal blooms (Hall et al., 2006) likely to be associated with elevated nutrient levels in the lagoon. These nutrient levels may rise with increased development on the coastal plain.

Other water related health concerns are gastro-enteritis diseases from the untreated water on most islands (see table 4). Water quality testing by the Ministry of Health and the Water Works Division of MoW has shown E. Coli presence in Rarotonga water supply. The levels fluctuate but there is normally some present.

It is undoubtedly true that tourism development has placed significant extra pressures on water resource management in Rarotonga and Aitutaki. In times of drought the extra tourist population places extra stress on the reticulation system although figures from Clement & Bourget (1992) suggests the water consumption by individual tourists is probably less than by Cook Islands residents. The largest stress comes from wastewater disposal, even for large hotels a septic tank is system is still used. This is a major issue for the Cook Islands.

#### **4.4 Watershed and coastal management**

The Cook Islands economy is largely dependent on tourism. The biggest draw card for tourists, and the most common promotional image, is the clean and clear, tropical lagoon waters. If the Cook Islands were to allow environmental degradation of the coastal lagoon environment through poor waste treatment and lack of integrated water resource management then it truly would be a case of "killing goose that laid a golden egg". The study of Hajkowicz and Okotai (2005) has clearly set this out in terms of an economic valuation: watershed pollution in Rarotonga has an estimated avoidable cost from improved watershed management of NZ\$7.4 Million per year (3% of GDP in 2003). These figures were derived from estimates of the cost of different categories in the absence of pollution; the major categories being healthcare, water treatment and alternative supply augmentation, and loss of tourism income (Hajkowicz and Okotai, 2005). It is vital to the Cook Islands future that watershed and coastal management are integrated fully.

The largest barrier to an integrated management approach is the lack of a national framework and legislation on water resource management. Without this the various departments involved in integrated water resource management struggle to identify their own roles and are reluctant to promote partnerships and integration.

## 5 Stakeholder Engagement

Process and approach used to gather information and institutions and individuals involved and consulted.

<b>Institution</b>	<b>Stakeholders/Interests and Responsibility</b>	<b>Relevance to IWRM and reason for Inclusion</b>	<b>Role in the consultation process</b>
Office for the Minister of Island Administration (OMIA)	Responsible for infrastructure and administration on the outlying islands	Any IWRM initiatives beyond Rarotonga will be administered by OMIA	Represented at Group meeting
Ministry of Finance and Economic Management	Financial centre of government and involvement in disaster recovery (island vulnerability)	Co-funding of IWRM and island vulnerability analysis	Interview with Patrick Arioka, and 2 other staff.
Ministry of Agriculture	Land use management	Land use planning initiatives	Interview with William Wigmore
Ministry of Health	Water quality for drinking and bathing	Interested in WQ	Represented at Group meeting
Ministry of Works	Water resource management	Intricately involved with water resource management and public water supply	Liaison with Atatoa Herman, Ben Parakoti and other staff.
NZAID	Aid development projects in all islands	Links to other water projects in Cooks	Discussed through MFEM
Environment Service	Biodiversity and general environmental protection	Concerned with environmental enhancement & degradation, part of IWP	Discussion with various staff and represented at group meeting
Department of Marine Resources	Water quality in the receiving waters (lagoon)	Interested in water quality of freshwater entering lagoon	Discussion with various staff and represented at group meeting
Cook Islands NGO	Aid projects and general IWRM initiatives	Involvement in future IWRM initiatives	Represented at Group meeting

## 6 Other programmes, projects and activities related to IWRM.

Donor	Project title	Location	Duration	Financial allocation
NZAID	Community water harvesting repairs & drought proofing	Pukapuka Rakahanga Penrhyn Manihiki (Northern Group)	2006 - 2009	\$1,875,000 (funding gap of \$2,230,000)
NZAID & CEAP ADB	Community water harvesting repairs & drought proofing	Wale, Pukapuka	2006 - 2009	\$188,000
NZAID	Topographical survey for recovery of public utilities in Pukapuka and satellite imagery for the outer islands	Pukapuka, Rakahanga, Penrhyn, Manihiki, Penrhyn, Nassau, Aitutaki, Palmerston, Mauke, Mitiaro, Atiu, Mangaia		\$480,000
NZAID	Cook Islands Ministry of Marine Resources Institutional Strengthening Project (CIMRIS)	Throughout Cook Islands	2005-2009???	????
NZAID	Water demand management partnership (SOPAC & PWA)	Rarotonga	2006-09	?
Cook Islands Govt	Water supply infrastructure upgrade	Rarotonga	??	>>

## **7 Capacity Development Needs for Removing the Barriers**

The Cook Islands, as with most Pacific Islands states, suffers from a lack of capacity to implement large-scale IWRM plans. It is important to note that there is not a lack of capability among people currently concerned with water management, the majority are tertiary level trained with an excellent understanding of the key water management issues. The issue is that these people are inundated with projects in many different areas related to water and there are not enough staff to take on new initiatives. The following recommendations for capacity building are based on the observations of Dr Davie from his short time on Rarotonga (January 2007).

1. The first step in capacity development for IWRM should be to develop a national framework and legislation on water resource management. If done well, this will enable long-term planning of staff requirements to implement a clear set of goals and objectives over a 10-20 year period. This will also provide a clear framework for the different agencies to work together on key cross-cutting themes like IWRM.
2. Run a series of workshops in the Cook Islands on the theme of integration (“what can be achieved through working together that can’t be achieved through separation”). This should be run at two levels with a different workshop for each. First for the high level managers and politicians in organisations, in order to ensure engagement by their organisations. The second should be for the “on-the-ground practitioners” to give practical ideas on how integration can be achieved. These workshops need to include regular follow up sessions to challenge practitioners to move beyond current institutional barriers.
3. Develop a capacity needs assessment for IWRM to be presented to the government for development over a 10 year time frame. The National Sustainable Development Plan (Te Kavenga Nui) provides an excellent platform for this. Included in Te Kavenga Nui documentation is an infrastructure development plan; a similar framework could be used to develop a national capacity plan. The plan should include targeting recruitment and training in particular areas of benefit for integrated water resource management.

## **8 Introducing an Integrated Approach towards Barrier Removal**

Current IWRM approaches in the Cook Islands are well developed in some areas but very weak in others. Grouping these into strong medium and weak, the areas of strength are hydrometric monitoring (a relatively recent initiative), Geographical Information Systems (GIS) and digital imagery for information storage and display; and planning for disasters and climate change (although implementation of the plans is still to come).

The medium strength areas include: initiatives around community awareness of land use, freshwater and marine interactions; improving water supply infrastructure; water demand management and water quality monitoring. In these cases there have been initiatives to develop these areas of IWRM but there is still a considerable amount of work to be done to make them mainstream water resource management concerns.

The weakest areas are around institutional arrangements, financing, and waste water treatment. These are the areas that require the largest amount of work to have an integrated approach to water resource management. The following list is in priority order for the type of work required to produce integrated water resource management in the Cook Islands.

### *National legislative and policy framework for water management*

The lack of a national legislative and policy framework for water policy is a major barrier to IWRM. Under the present system government departments and other organisations are unsure of each others roles and there is possible duplication and/or omission of roles. It also leads to mistrust on the motives behind integration in the management of water resources. There is a need for the current draft water management legislation (drafted under the IWP) to be reviewed and enlarged to look at institutional structures and roles for future IWRM.

### *Understanding waste water treatment impacts on receiving waters*

There is a need to understand the contribution current wastewater treatment systems (septic tanks) make to nutrients entering receiving waters, i.e. groundwater, streams and the lagoon. This requires an assessment of how much nitrogen and phosphorus is in groundwater and how quickly the groundwater system is moving towards the lagoon. This information needs to be tied into an assessment of what levels on nutrient are sustainable in the lagoon. With both these sets of information a decision can be made as to whether the desired water quality standards are attainable under the current waste water treatment practices or a new systems needs to be designed. This could be a centralised waste water treatment plant or an upgrade of current septic tanks; the decision on which would be dependent on the required water quality standards.

### *Capacity building around integrated management*

As set out in section 7 there is a major need to address the issue of capacity in the area of integrated water resource management. This requires long-term succession and training planning.

### *Water demand management*

As island states like the Cook Islands face increased risks through climatic vulnerability the reduction in water leakage and wastage is desirable. This will allow for cutting costs in service provision but also ensure that the current allocation goes further. This can be achieved by bringing in simple water demand management techniques such as smart irrigation systems, water metering and pricing, and education on water usage.

### *Water supply surety and island vulnerability*

Surety of water supply is an issue that needs addressing as tourism expands in the Cook Islands and possible climate change alters the patterns of rainfall. This needs to be addressed in conjunction with water demand management so that water supplies are not overdeveloped at the expense of the environment. Possible future strategies include greater use of groundwater on Rarotonga (during periods of drought), aquifer storage and recovery (ASR) during the wet season on outlying islands and desalination.

Although there are many areas that require addressing for IWRM to be achieved in the Cook Islands there is considerable potential for it to be achieved. It has the advantage of being a relatively small country without greatly increasing population pressures and a moderate to high rainfall. The largest requirement is a political and community will for integration between agencies so that IWRM can lead to achieving sustainable growth in harmony with the Cook Islands' culture and environment.

## 9 References

- ADB – Asian Development Bank (2006) Draft final report – Volume 4: Climate change considerations. TA 4605-COO
- Anon (unknown) The hydrology of Mitiaro. Thesis held by Ministry of Finance and Economic Management, Rarotonga.
- AusAID (2004) Upgrading of Mangaia water supply, Cook Islands. Project design document. From Ministry of Finance and Economic Management, Rarotonga.
- Beetham RD (1988) Cook Islands Rarotonga water supply project: A preliminary evaluation of the potential for large capacity, valley storage reservoirs. DSIR, NZ Geological Survey report EGI 88/074.
- Binnie (1984) Report on water resources and water supply of Aitutaki. From Ministry of Finance and Economic Management, Rarotonga
- Binnie (1985) Rarotonga distribution system leakage test. From Ministry of Finance and Economic Management, Rarotonga
- Binnie, (1987) Rarotonga water supply review – summary report. Unpublished Binnie & Partners report, Ministry of Works, Rarotonga.
- Brockman Tym International (1999) Design of septage treatment facilities in Rarotonga and Aitutaki. Supplementary Appendix to the Draft Final Report 1A Waste Management Project. Held at Ministry of Works, Rarotonga
- Burke E (1998) ESCAP/SOPAC water pricing and demand management and conservation workshop, Rarotonga, Cook Islands, 24-26 June 1998. SOPAC miscellaneous report 292.
- Carpenter C, Jones P (2004) AN overview of Integrated Water Resources Management in Pacific Island Countries: a national and regional assessment. SOPAC miscellaneous report 554.
- Clement H, Bourget L (1992) Outline scheme for water development and management. Unpublished WMI report, Ministry of Works, Rarotonga.
- Evans, JT (2006) Political ecology, structural adjustment and coral reef change in the Cook Islands, a micro-state. Unpublished MA thesis, Department of Geography, university of Hawai'i.
- Falkland, T (2000) Mangaia, Cook Islands: Report on water investigations., June-July 2000. AusAID report held at Ministry of Finance and Economic Management, Rarotonga.
- Fenemor A, Phillips C, Davie T, Young R, Allen W, Harmsworth G, Davies-Colley R, Lauder G, Markham S, Stuart B (2006) The promise of integrated catchment management. In: *Resource Management under Stormy Skies: Water Allocation @ the Crossroads Conference proceedings, Christchurch, New Zealand, November 2006, pp40.*
- Hajkowicz SA, Okotai P. 2005. An Economic Valuation of Watershed Management in Rarotonga, the Cook Islands. A Consultancy Report to the South Pacific Regional Environment Program and Cook Islands Government. CSIRO Sustainable Ecosystems, Canberra, Australian Capital Territory.
- Hajkowicz SA. 2006. Economic Impacts of Coastal Water Pollution in a Small Island Nation: A Case Study from the Cook Islands. Coastal Management. 34(4). In press
- Hall J, Stewart R, Chang H (2006) Titikaveka Health Effects: Environmental Investigations, December 2004 to November 2005. NIWA Client Report for Minsitry of Marine Resources, Cook Islands. HAM2006-009.



- Herman A, Parakoti, B (2003) Detailed groundwater assessment for Rarotonga. Unpublished report, held at Ministry of Works, Rarotonga.
- IWP (2004) Draft of scoping study for Takuvaine Watershed. Unpublished report, Ministry of Works, Rarotonga
- Mason P (1999) Rarotonga Hydrological Network and Technical assistance programme Mission 1 – Hydrological station establishment and associated training. NIWA client report CHC99/64, prepared for Ministry of Works, Rarotonga.
- Mason P (2005) Rarotonga Hydrological Network and Technical data summary for period August 1999 to June 2005. NIWA client report CHC2005-152, prepared for Ministry of Works, Rarotonga.
- MFEM (2006) Cook Islands cyclone recovery reconstruction plan 2006-2009. Ministry of Finance & Economic Management Report. [www.mfem.gov.ck](http://www.mfem.gov.ck)
- New Zealand Meteorological Service (1981) Summaries of Climatological Observations to 1980. *New Zealand Meteorological Service Miscellaneous Publication 177.*
- Rongo T-T (2006) Takuvaine water catchment draft management plan. Unpublished report at Ministry of Works, Rarotonga.
- Taylor R, Smith I. (1997) The state of New Zealand's Environment 1997. Ministry for the Environment
- Thompson, C.S. (1986) The climate and weather of the Southern Cook Islands. NZ Meteorological Service Miscellaneous Publication 188(2).
- Wood BL, Hay RF, 1970: Geology of the Cook Islands. New Zealand Geological Survey Bulletin 82. 103p.