

Kiribati Protected Areas



BIOPAMA Regional Workshop

11-15 June 2018

Apia, Samoa

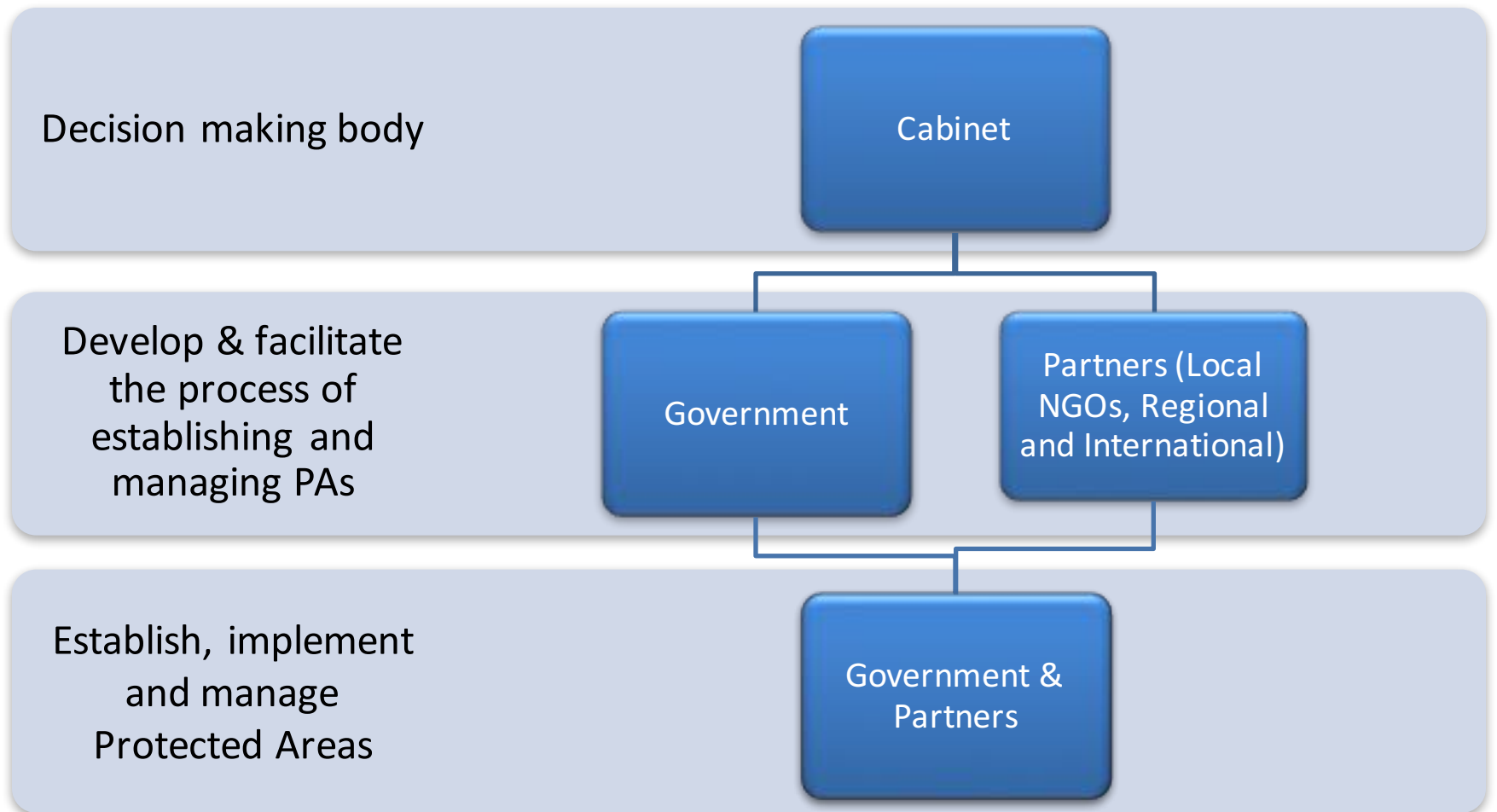
Background

Kiribati's PAs:

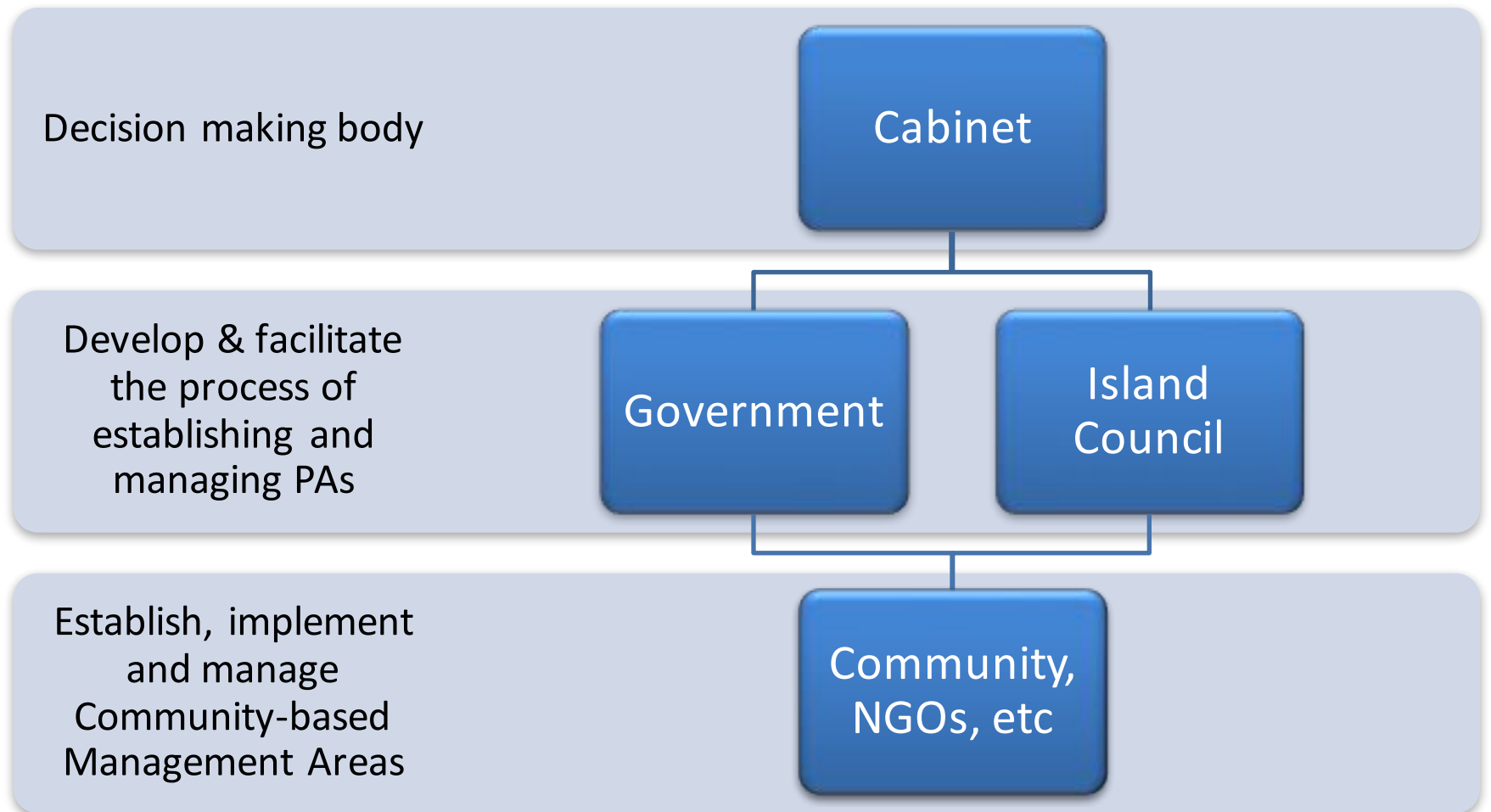
1. Established as part of Government Initiatives e.g. Kiritimati and Southern Line Islands (1975), PIPA (2006) and Nooto Ramsar site (2013)
2. To assist and support Communities (new) e.g. with KICS with declaration of Kiribati EEZ as Shark Sanctuary (2016) and Community-based Mangrove Management Area (CbMMA) -2016



Government Driven Protected Areas



Community Driven Protected Areas



SUCCESSFUL STORIES



Progress towards Aichi Target 11



SPREP Pacific Islands Protected Area Portal

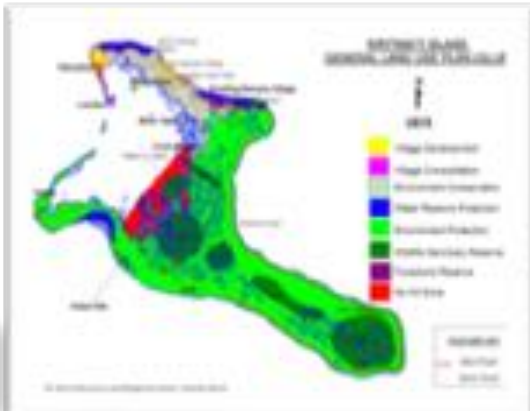
Key protected area stats

- Total number of protected areas: 1
- Terrestrial protected area coverage: 22.20%
- Shortfall to the CBD's 17% terrestrial target: **5.20%**
- Total number of marine protected areas: 0
- Marine protected area coverage: 0.00%
- Shortfall to the CBD's 10% marine target: **10.00%**

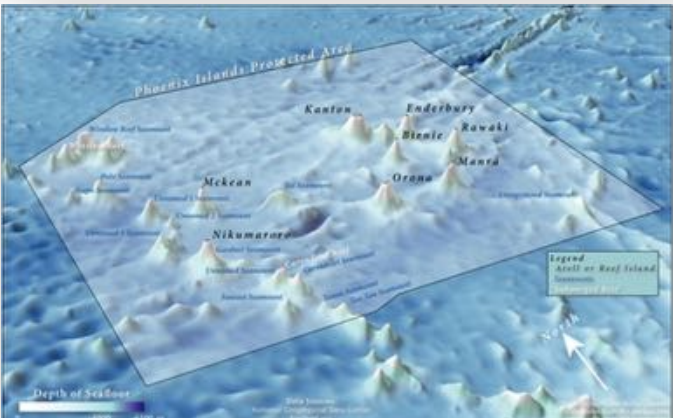
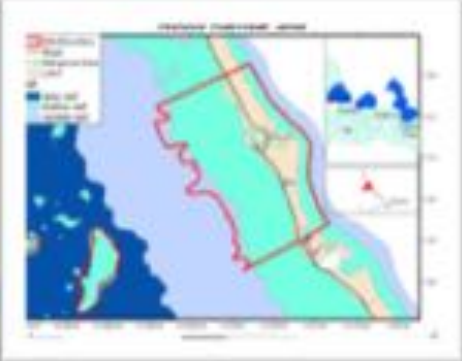
Protected area name	Status	IUCN management category	Reported area (km ²)	Reported marine area (km ²)	management plan? (Y/N)
North Tarawa (Nooto Ramsar Site)	Designated	VI	12.7	0	Y
Bonriki Island Water Reserve	Designated	V	?	0	N
Phoenix Islands	Designated	III	410,500.00	410,500.00	Y
Phoenix Islands Protected Area	Inscribed	III	408,250.00	0	Y
McKean Island	Designated	III	0.57	0	Y
Birnie Island	Designated	III	0.2	0	Y
Rawaki (Phoenix) Island	Designated	III	65	0	Y
Kanton	Designated	III	9,206	0	Y
Manra	Designated	III	5,214	0	Y
Vostock Island	Designated	III	0.24	0	N
Millennium Island	Designated	III	0.235	0	N
Starbuck (Closed Area)	Designated	III	162	0	N
Malden Island (Closed Area)	Designated	III	39.3	0	N
Flint Island	Designated	III	3,446	0	N
Kiritimati Atoll (Christmas Island)	Designated	Ia	523.7	255.13	N
Cook Islet Closed Area (Kiritimati WS)	Designated	Ia	22	0	N
Motu Tabu Islet Closed Area (Kiritimati)	Designated	Ia	0.04	0	N
Motu Upua Closed Area (Kiritimati)	Designated	Ia	0.19	0	N
Ngaontetaake Islet Closed Area (Kiritimati)	Designated	Ia	0.26	0.26	N
Dojin Closed Area (Kiritimati)	Designated	Ia	5,472	0	N
Tanguoa Closed Area (Kiritimati)	Designated	Ia	24,372	0	N
Koii Closed Area (Kiritimati)	Designated	Ia	8,967	0	N
Toyota Closed Area (Kiritimati)	Designated	Ia	17,276	0	N
Mouakena Closed Area (Kiritimati)	Designated	Ia	39,519	0	N
Deggar Water Reserve Area (Kiritimati)	Designated	Ia	5,797	0	N
Air NZ Water Reserve Area (Kiritimati)	Designated	Ia	6.02	0	N
Fisheries No Kill Zone	Designated	II	35.13	35.13	N
North-west Point Closed Area (Kiritimati)	Designated	Not Reported	0.13	0.13	N



Progress towards Aichi Target 11



Protected area name	Status	IUCN management category	Reported area (km ²)	Reported marine area (km ²)	Reported terrestrial area (km ²)	management plan? (Y/N)
North Tarawa (Nooto Ramsar Site)	Designated	VI	12.7	0	12.7	Y
Bonriki Island Water Reserve	Designated	V	N/A	N/A	N/A	N
Phoenix Islands	Designated	III	410,500.00	410,500.00	0.00	Y
Phoenix Islands Protected Area	Inscribed	III	408,250.00	0	0.00	Y
McKean Island	Designated	III	0.57	0	0.57	Y
Birnie Island	Designated	III	0.2	0	0.2	Y
Rawaki (Phoenix) Island	Designated	III	65	0	65	Y
Kanton	Designated	III	9,206	0	9,206	Y
Manra	Designated	III	5,214	0	5,214	Y
Vostock Island	Designated	III	0.24	0	0.24	N
Millennium Island	Designated	III	0.235	0	0.235	N
Starbuck (Closed Area)	Designated	III	162	0	162	N
Malden Island (Closed Area)	Designated	III	39.3	0	39.3	N
Flint Island	Designated	III	3,446	0	3,446	N
Kiritimati Atoll (Christmas Island)	Designated	Ia	523.7	255.13	523.7	N
Cook Islet Closed Area (Kiritimati WS)	Designated	Ia	22	0	0	N
Motu Tabu Islet Closed Area (Kiritimati)	Designated	Ia	0.04	0	0	N
Motu Upua Closed Area (Kiritimati)	Designated	Ia	0.19	0	0	N
Ngaontetaake Islet Closed Area (Kiritimati)	Designated	Ia	0.26	0.26	0	N
Dojin Closed Area (Kiritimati)	Designated	Ia	5,472	0	0	N
Tanguoua Closed Area (Kiritimati)	Designated	Ia	24,372	0	0	N
Koii Closed Area (Kiritimati)	Designated	Ia	8,967	0	0	N
Toyota Closed Area (Kiritimati)	Designated	Ia	17,276	0	0	N
Mouakena Closed Area (Kiritimati)	Designated	Ia	39,519	0	0	N
Deggar Water Reserve Area (Kiritimati)	Designated	Ia	5,797	0	5,797	N
Air NZ Water Reserve Area (Kiritimati)	Designated	Ia	6.02	0	6.02	N
Fisheries No Kill Zone	Designated	II	35.13	35.13	0	N
Total Protected Area			819736.854	290.52	833.628	

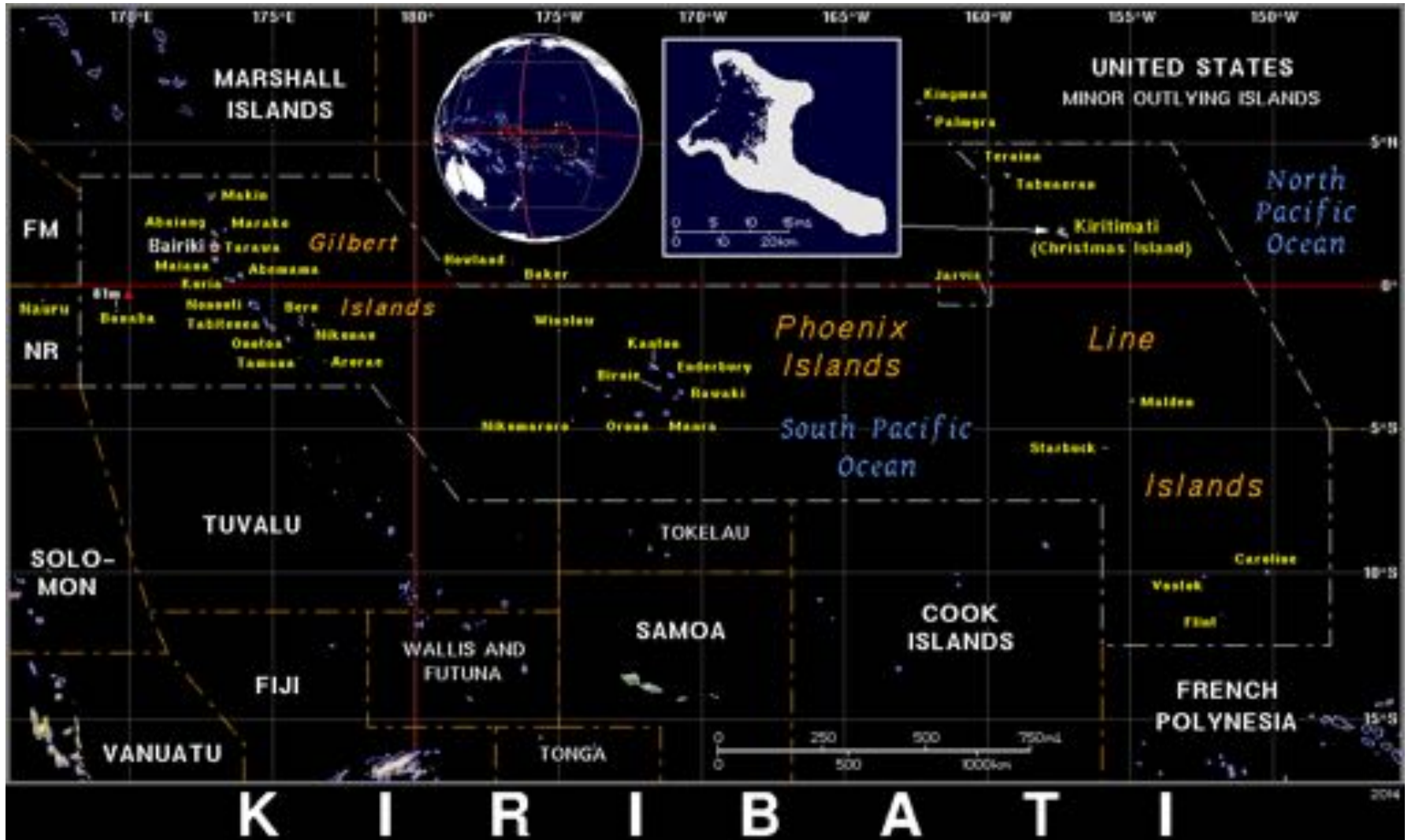




ARANUKA ISLAND COUNCIL



KIRIBATI EZZ AS A SHARK SANCTUARY



CHALLENGES

- Population Increase
 - More pressure on resource
 - Harvesting unsustainably
 - Resource exploitation
 - Poaching & illegal entry
 - Budget constraints
 - Weak enforcements
 - Limited or under resource / tools
 - Introduction of other potential invasive species
- Little fire ants etc



Poaching vs Protected Species



Bio-security concerns



Invasive species control & eradication

- Feral Cats
- Rats (Ship rats, Polynesian)
- Yellow Crazy ants



Land & Sea based wastes vs tourism



Eco-tourism vs marine pollution



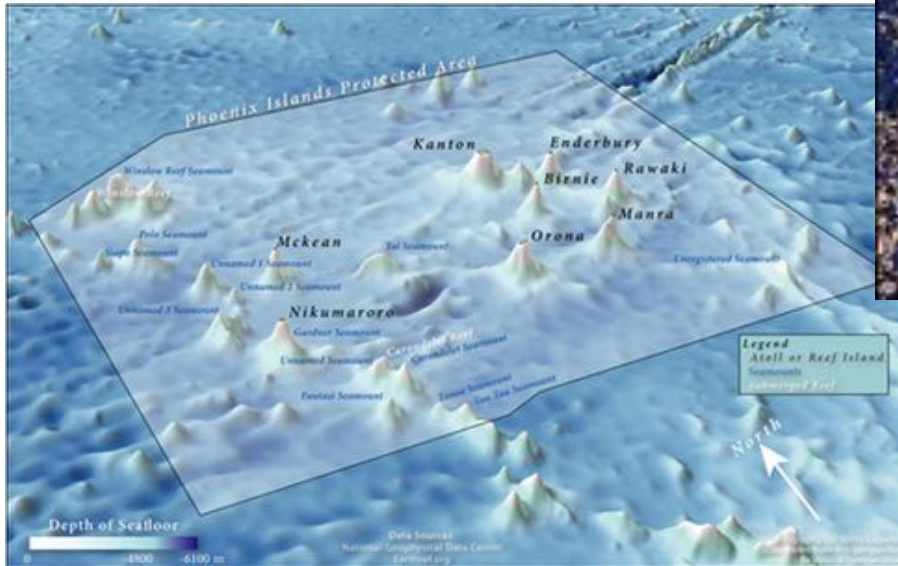
Eco-tourism vs illegal landing



Awareness vs Reporting



Difficulty to monitor/surveillance



Lessons learnt & opportunities

- Strengthen synergy and coordinated efforts between key stakeholders/players involved in PAs (JET, Partners etc)
- Public awareness and working with the public at all levels even High Level like MPs and Cabinet
- Sign boards with clear boundary marks at PAs
- Let the Public know that they are owners of the PAs
- Align workplan and activities to with NBSAPs, Regional and International SAPs, etc
- Share updates with donor and implementing partners

Main resourcing



External funding

- Multilateral funding (GEF)
- Bilateral funding - NZAID (MFAT), EU, etc



Government of Kiribati



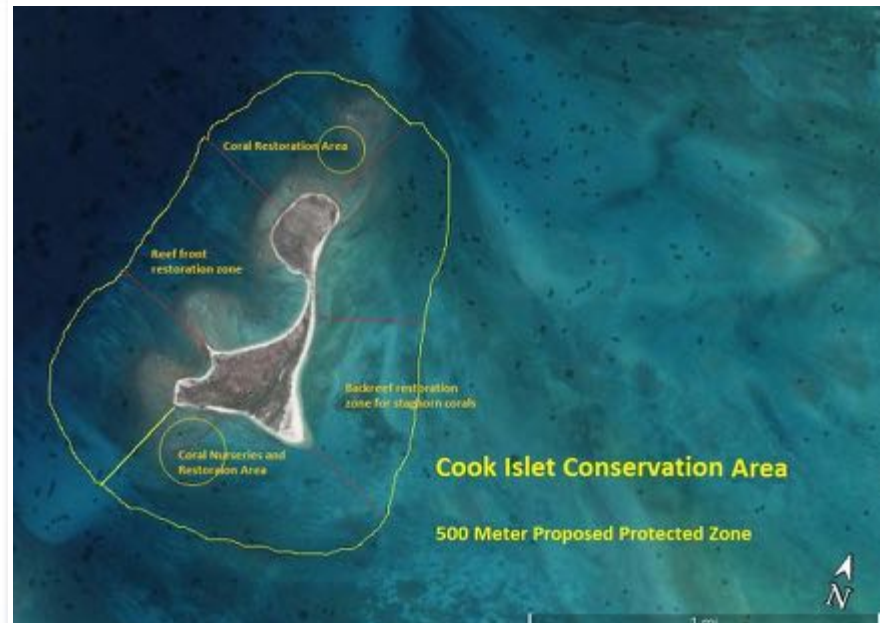
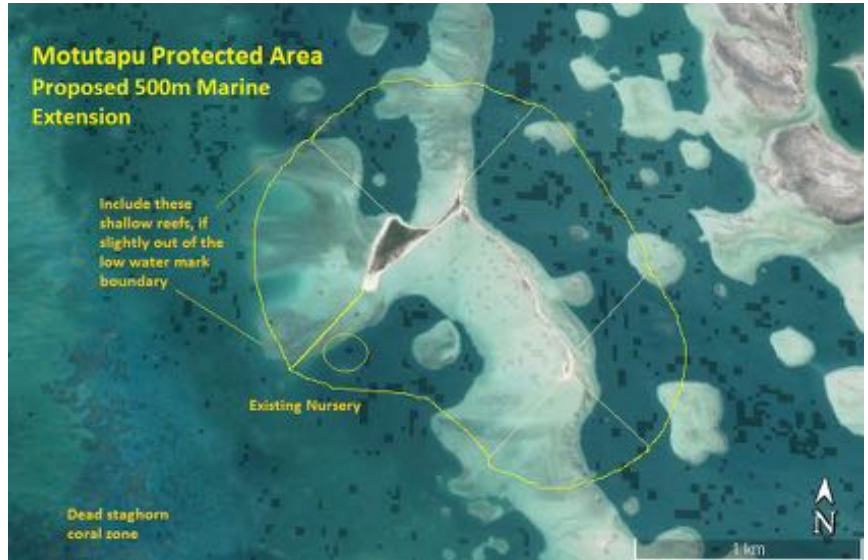
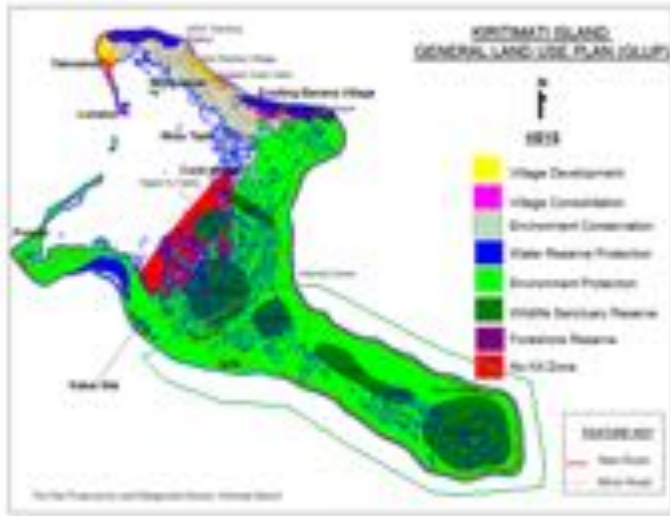
PIPA Trust Fund

Capacity gaps & needs

- Limited Resources to support the implementation, management and enforcement of PAs
 - Financial, Human, Tools/Equipment
- Limited Skills and knowledge to monitor and manage PAs
- High cost due to isolation of PAs
- Gaps in legislations e.g. Ordinances need to be updated

Future Planning

- Expansion of PAs



Future Planning

- Proposed Center to accommodate PIO and PIPA Conservation Trust Office to serve the promotion of PIPA in Tarawa.
- Develop PIPA Management on Ecotourism
- Develop Management plan for PAs in Kiritimati
- Project development to seek support on eradication/control of IAS and field monitoring/surveillance equipment/tools
- Conduct public awareness to all levels on PAs



Acknowledgement



New England
Aquarium

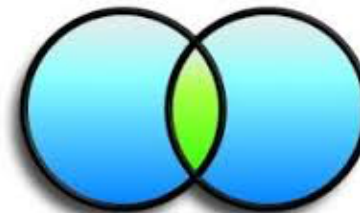
CRITICAL ECOSYSTEM
PARTNERSHIP FUND



**SPREP
PROE**



**Auckland
ZOO**



**Pacific
INVASIVES
INITIATIVE**



Nei Akoako



Nakoa, Nakai ao n Taainako

Kam rabwa

And thanks for not asking Qs.