

# Restoration Plan Consultation Report for the OLPP NP

December 11, 2015, EFKS Hall, Poutasi, Upolu

Prepared by James Atherton for MNRE

December 15, 2015



Participants at the OLPP NP Restoration on December 11, 2015 at the Poutasi EFKS Hall. Photo taken by James Atherton.



# Table of Contents

1. Introduction.....	2
2. Attendance List.....	2
3. Agenda for the Community Consultations.....	3
4. Summary of comments made .....	4
5. Next Steps.....	5
6. Consultation Evaluation .....	7
Annex 1. Attendance List at OLPP Restoration Consultation, Dec 11, 2015 .....	8
Annex 2. Presentations Given .....	11
Annex 3. Evaluation Form .....	31

# 1. Introduction

This report is a summary of the community consultations held on December 11, 2015 to discuss the draft operational plan for the restoration of the O le Pupu Pu'e (OLPP) National Park. The restoration of the OLPP NP is a key activity in the Management Plan for the park (MNRE 2010). Preparation of the restoration plan for the OLPP NP, as well as the community consultation were funded under the GEF-PAS (Global Environment Facility - Pacific Alliance for Sustainability) Regional Invasive Species Management Project.

A separate document presents the actual operational plan for the restoration of the park.

## 2. Attendance List

Forty participants attended the consultation including representatives from the different village community groups (Alii ma Faipule (village matai), Sui o le malo/Pulenuu (official government representative), Sui Tamaitai (government representative for the women), Komiti o Tina (women's committee), and Tupulaga talavou (youth group) from each of the following three villages adjacent to the OLPP NP: Sa'aga, Saleilua and Poutasi. In addition, owners of beach fales and hotels in villages near the park also attended the consultation.

The attendance list for the community consultations for the OLPP NP restoration is shown in Annex 1. In addition to the community representatives, the following resource people also attended the consultation:

- Taupau Maturo Paniani (GEF-PAS Invasive Species Coordinator)
- Elizabeth Kerstin (Principal Research Officer, FD)
- Si'a Lesaisaea Niualuga Evaimalo (Principal Terrestrial Conservation Officer, DEC)
- Vailega Timoteo Moles (Senior Forestry Officer, FD)
- Loto Tuitaalili (Research Forestry Officer, FD)
- Peteli Pese (Forestry Officer, FD)
- James Atherton (Consultant)

The consultant would like to acknowledge the assistance of all resource people in making the consultation a success. In particular he would like to thank S'ia for being an excellent MC, Taupau, Elizabeth and Vailega for the good, clear presentations and Loto and Taupau for the translations of workshop material. Faafetai tele lava mo le tou feasoasani.

### 3. Agenda for the Community Consultations

The English version of the agenda for the community consultations is shown below. The presentations given are shown in Annex 2.

- 9.00 Welcome Remarks (MNRE/DEC – Si’a Niualuga Evaimalo)
- 9.05 Prayer (Rev Letone Uili, EFKS Poutasi)
- 9.10 Opening Remarks (MNRE/FD- Elizabeth Kerstin)
- 9.15 Morning Tea
- 9.45 Presentation 1: GEF PAS Invasive Species Project Background (MNRE/DEC-GEF PAS IAS Project Coordinator)
- 10.00 Presentation 2: OLPP Management Plan and Current Activities (MNRE/FD- Elizabeth Kerstin)
- 10.15 Presentation 3: Draft Operational Plan on Management of IAS in OLPP NP including results of Invasive Species Survey (MNRE/FD-Timoteo Molesi)
- 11.00 Q and A and General Discussion
- 12.00 Closing Remarks (MNRE/DEC- Si’a Niualuga Evaimalo)
- 12.10 Group Photo followed by Lunch



The Saaga Breakout group with Elizabeth Kerstin as the facilitator. Photo taken by James Atherton.

## 4. Summary of comments made

Table 2. Comments made by the village breakout groups

Questions	Poutasi	Saleilua	Saaga
Q1. Comments on the draft restoration plan-objectives, activities etc?	<ul style="list-style-type: none"> <li>All agreed on what is planned by the Ministry for controlling the invasive species within the park.</li> <li>Requesting the Ministry to provide sufficient financial support to pay for the workers who will be doing the job.</li> <li>Request the consultant to put into his management plan a proposal for finance, that will be allocated for every community and hotels involved to make it easier for them to apply for that amount when time comes to carry out the job.</li> <li>Recommend replanting of more trees to make it more attractive not only to the public but also the tourists</li> </ul>	<ul style="list-style-type: none"> <li>Programme well prepared</li> <li>Restoration should be carried out by the communities as part of partnership with the ministry</li> <li>Recommend conducting awareness programmes within villages in restoration and removing of the invasive species</li> <li>Advice planting trees that can help in water restoration</li> <li>Strongly recommend financial support from the Ministry or government to pay for the communities who will help in the programmes</li> <li>Advise the project concerned or ministry to provide working tools,(eg, knives, shovels, chainsaws etc) and proper safety gears for the communities</li> <li>Need to plant trees that can kill the invasive species</li> <li>Fue lautetele should be manually removed by uprooting and burn, or take them to Piu where it is used for biogas.</li> <li>Recommend a biogas station be built at Saleilua, so they remove can the vine and take it there for reusing.</li> </ul>	<ul style="list-style-type: none"> <li>The Ministry should have a programme to employee the youths from 3 villages, so they can assist in minimising the invasive species</li> <li>Should divide the eradicating of the invasive species among the 3 villages (Saaga, Poutasi, Saleilua)</li> <li>Ministry should contact the villages through the pulenuu, about the laws of the National Park, so that whoever is caught doing an illegal operation should be reported and penalised</li> <li>There should be an advertisement on TV or radio, letting the public know that the National Park is well protected, also some signage within the park should be installed</li> <li>Continue doing seminars to strengthen the link between the villages and the ministry</li> </ul>
Q2. How can the community be better involved in the management of the park and the restoration work?	<ul style="list-style-type: none"> <li></li> </ul>	<ul style="list-style-type: none"> <li>Recommend the help of all church denominations in the communities in restoration and removing of invasive species</li> </ul>	<ul style="list-style-type: none"> <li>Always ask the communities if needed help with upgrading works</li> <li>Communities should lead and find a way to eradicate the invasive plants</li> </ul>
Q3. What can Forestry do to improve	<ul style="list-style-type: none"> <li>Recommend setting out laws for the public to</li> </ul>	<ul style="list-style-type: none"> <li>Install signage where invasive species are found in the National park</li> </ul>	<ul style="list-style-type: none"> <li>Proposals and objectives of the programmes should be disseminated to the</li> </ul>

Questions	Poutasi	Saleilua	Saaga
management of the park?	<p>abide by while visiting the park</p> <ul style="list-style-type: none"> <li>• Recommend upgrading all the tracks and the coastal walk</li> <li>• There should be a security guard to look after the park</li> <li>• Recommend upgrading of signage within the park</li> <li>• It is a must for every person who visits to pay at least \$2.00 at the visiting sites (eg Peapea cave, ma tree walk etc) That money will go towards the managing of upgrading of the park</li> </ul>	<ul style="list-style-type: none"> <li>• Need some security or nightwatchman to look after the park</li> <li>• Recommend installation of public toilets, bath rooms, etc within the park</li> <li>• Recommend an advertisement on TV and radio to let the public know that any illegal dumping of rubbish in the park is prohibited</li> </ul>	<p>communities one month before the consultation, so that every community could be well prepared and understand of what it is all about before it really takes place</p> <ul style="list-style-type: none"> <li>• Request for another consultation in the near future, including of what had been said before about giving out the information to the communities beforehand, so they can come well prepared with suggestions and opinions</li> <li>• Recommend a fee (charge) of \$2.00 for every tourist who comes to visit the park, or any other amount that will be agreed on</li> <li>• Recommend the installation of suitable facilities for the benefits of the touring parties, if not, might as well forget the whole thing.</li> <li>• Awareness programmes should be conducted within Primary and Colleges, so they too can also assist in promoting the parks, they can also visit if needed for education tours.</li> </ul>

## QUESTIONS & ANSWERS

Uta'ileuo Kilisi (Saaga)

Q. Will the Government provide financial assistance for the communities who will be doing the job in removing the invasive plants, and do restoration within the park?

A. That is exactly what the consultant is trying to do. Try to find financial help from different sources so that the programme will succeed in achieving its target.

Sauiluma Auvaa (Saleilua)

Q. As the National Park is rich in medicinal plants, can these plants be removed if needed for treatment?

A. No you cannot. It is against the law of the park. No plants can be removed from the park. If you want, the nurseries within the forestry can supply those seedlings for you, and it is your job to plant them for your personal use

Tuulau Solomona (Saleilua)

Q. i. Can a village like Saleilua apply for the water supply that comes from the national park to be privatised? ii. What exactly is our first priority- the renewable energy (biogas) or the removal of the vine? (fuelautele)

- A. i. No, they cannot, all the 3 villages should have a say in the matter
- ii. If we prioritise the biogas knowing that it's another way of controlling the vine, people will tend to grow the vine rather than removing it, so prioritise the eradication of the invasive plant.

Sina Tultua (Saleilua)

Q. As mentioned, there is a chemical that can be injected in the plant so that it can kill the invasive species, can the government through its initiative provide that for every individual household?

A. No, you buy your own

Nonu Meleisea ( Poutasi)

Q. i. As I have gathered from the start, the park has covered quite a large area. Can the government lend 5 hectares for a new airport? ii. Is shooting bats in front of your own house an offence?

A. i. First, there is no need for a new airport. By doing so, there will be a great risk to the biodiversity.

ii. Yes, shooting bats in front of your own house is an offence. It's already being passed by the law under conservation.

Tu (Saaga)

Q. i. Can you get a reward if you report someone shooting bats? ii. Can the villages get cameras to photograph the offenders when caught?

A. i. That is your share in conserving the national park

ii. We have park rangers who are responsible for looking after the park

Uta'ileu (Saaga)

Q. Can we just kill the bats that are suitable? (big)

A. We cannot do that. We can hardly differentiate them.

## 5. Next Steps

Vailega Timoteo Molesi from the South Upolu Forestry Office at Togitogiga summarised the main next steps for the project:

- Finalise Operational Plan by Jan 8 including budget and labour requirements
- Prepare funding proposals to implement project
- Hire Restoration Team
- Commence restoration work

## 6. Consultation Evaluation

An evaluation form was completed by 25 participants (see Annex 3). Overall the consultation was very well received by the participants. The full findings are shown below.

<b>Presentations</b>	<b>Poor</b>	<b>Fair</b>	<b>Average</b>	<b>Very Good</b>	<b>Excellent</b>
Overall ranking of the presentations (in terms of clarity and usefulness).	1	2	3	4	5
	<input type="text"/>	<input type="text"/>	<input type="text"/>	<input type="text" value="3"/>	<input type="text" value="22"/>

Comments: Good, and informative presentations. Improved understanding of invasive species and the values of the National Park. Should redo the consultation next year.

<b>Break out groups</b>	<b>Poor</b>	<b>Fair</b>	<b>Average</b>	<b>Very Good</b>	<b>Excellent</b>
Overall ranking of the break out groups (in terms of the way they were organized and how useful they were).	1	2	3	4	5
	<input type="text"/>	<input type="text"/>	<input type="text"/>	<input type="text" value="3"/>	<input type="text" value="22"/>

Comments to support your rating: Good discussions. Support the assistance of the villages to do the work. Need a strong partnership with communities to tackle the issues. Need ingoing dialog with the communities.

<b>Overall Ranking</b>	<b>Poor</b>	<b>Fair</b>	<b>Average</b>	<b>Very Good</b>	<b>Excellent</b>
Overall ranking of the workshop (in terms of the way it was organized and how useful it was)	1	2	3	4	5
	<input type="text"/>	<input type="text"/>	<input type="text"/>	<input type="text" value="3"/>	<input type="text" value="22"/>

What did you like most about the workshop?

- *All issues were important and useful, good to learn about native biodiversity and importance of managing invasive species*

What are some suggestions for improvement?

- *Need funds to progress this work, need to improve walking trails and facilities so that tourists can be comfortable. Need ongoing communication between the ministry and communities. Must ensure that this program is ongoing. Participants should be informed earlier so that they have enough time to think about the issues before the consultation.*



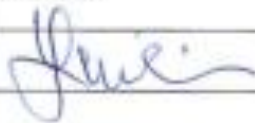
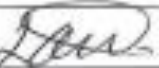
# Annex 1. Attendance List at OLPP Restoration Consultation, Dec 11, 2015

Registration/Allowance Form - Community Consultation on Discussion of Draft IAS Management Plan at OLPP NP - 11th December 2015

EFKS Hall - Poutasi

	Names	Village/Organization	Allowance	Signatures
1	Maiwani K.	Singa	\$10	
2	TUTUATASI TOLUAKA SAGA	SAGA	\$10	
3	Tupuala Laka	SAGA	\$10	Tupuala L.
4	Sua Tupuala	SAGA	\$10	Sua J.
5	Muliaga	UAIULA BEACH	\$10	
6	Talaleith AUSAUA	Poutasi	\$10	Atheodone.
7	Manahana APANOA	Maotani <sup>(LITAGATAFA)</sup>	\$10	Mie
8	Mata Ake Chony	Salulua	\$10	Mata
9	Sua. Talitua	Salulua	\$10	Sua. Talitua
10	Sua Tupala	Poutasi	\$10	
11	Ofisa. Tavita	Poutasi	\$10	
12	Lytwin. Y.	Poutasi	\$10	Lytwin.
13	Saculumua. A	Sakulua	\$10	
14	Tuatagaka Joe	Poutasi/PDT	\$10	Joe
15	Asotonu F.	Poutasi	\$10	Asotonu F
16	Lupa Soma	Poutasi	\$10	
17	Lenta Tupuala	SAGA	\$10	Lenta. T.
18	Itagia Casolo	SAGA	\$10	Itagia d
19	Sopelan	SAGA	\$10	Sopelan.
20	TUMENA Afia	POUTASI	\$10	Afia

	Names	Village/Organization	Allowance	Signatures
21	Faalatenu.	Pontasi	\$10	Faalatenu.
22	Sia, Tanga	Pontasi	\$10	Sia, Tanga
23	Soromona. Laki	Pontasi.	\$10	Soromona
24	Pana Moku	Pontasi	\$10	Pana
25	Letaulau 7	Pontasi	\$10	Letaulau 7
26	Lupeomani	Pontasi	\$10	
27	Arbun. S	Salelusa.	\$10	Arbun. S.
28	Samuel	Pontasi	\$10	Samuel
29	Toxy	Pontasi	\$10	Toxy
30	Aurua.	Salelusa.	\$10	Aurua.
31	Tagataese.	Salelusa.	\$10	Tagataese.S.
32	Latafali	Salelusa.	\$10	Latafali.
33	Nera. MIA	Salelusa.	\$10	Nera.
34	Nive Lupeomani	Pontasi	\$10	Nive Lupeomani
35	Murray Taulalo	Pontasi	\$10	Murray Taulalo
36	Feoniu Uiti	Pontasi	\$10	Feoniu Uiti
37	Tenila-Matye	Pontasi.	\$160	Tenila-Matye
38	Carol Uiti	Pontasi	\$100	Carol Uiti
39	Moana S.A.	Pontasi	\$100	Moana S.A.
40	Kulasona Naka	Pontasi		Kulasona Naka
41	Mature Pannini	DEC		Mature Pannini
42	Nivaluga Ewaniolo	DEC		Nivaluga Ewaniolo

	Names	Village/Organization	Allowance	Signatures
43	Rev. LUSOAT		\$200	
44				
45	LESTOANAN M	Sun. St. New	\$200	
46				
47	Tuniteo	Forestry		
48	Elizabeth	Forestry		
49	Peteli	Forestry		
50	Loto	Forestry		
51				

# Annex 2. Presentations Given

## 1. Introduction to GEF-PAS Regional Invasives Project (Taupau Maturu Paniani)

Slide 1

---

---

---

---

---

---

---

---

Slide 2

---

---

---

---

---

---

---

---

Slide 3

---

---

---

---

---

---

---

---

Slide 4

**Tolu Vaega - Polokalame**  
1. Saiiiliqa ma suesuega – loi ma isumu i motu o Aleipata ma isi:

DEC-MNRE SPREP gef UNEP

---

---

---

---

---

---

---

---

Slide 5

**Tolu Vaega - Polokalame**  
1. Saiiiliqa ma suesuega – Limu enaena, limu meamata ma le alamea i Samoa:

DEC-MNRE SPREP gef UNEP

---

---

---

---

---

---

---

---

Slide 6

**Tolu Vaega - Polokalame**  
1. Saiiiliqa ma suesuega – manulele o le myna:

Point records of Common Myna in Samoa, May 2014-15

Point records of Jungle Myna in Samoa, May 2014-15

DEC-MNRE SPREP gef UNEP

---

---

---

---

---

---

---

---



Slide 7

**Tolu Vaega - Polokalame**  
 1. Saliililoa ma suesueca – tamaiici, ulu vao, ulu mamoe ma isi i le Maua o Vaea

DEC-MNRE SPREP gef UNEP

---

---

---

---

---

---

---

---

Slide 8

**3. Tolu Vaega - Polokalame**  
 2. Polokalame Fa'alauiloa – nusipepa, TV, telefoni, initaneti, leitio, fonotaqa/Semina, ma isi,

Final Copy Seminar Vaea.pdf  
 Water Lettuce 1 set sheet Samoa vers.co.uk

DEC-MNRE SPREP gef UNEP

---

---

---

---

---

---

---

---

Slide 9

**3. Tolu Vaega - Polokalame**  
 Iloiloina O Tulafono:  
 1. Tulafono o le fa'aulufale mai o punaoa fa'alafua;  
 2. Tulafono o le asiasia o oloa mai fafo;  
 3. Tulafono o le auivi o Matagaluega e fa'asino i ai le puleaina o punaoa fa'alafua;  
 4. Tulafono mo i latou e fa'amiliina punaoa fa'alafua;  
 Tapanaina o Ta'iala mo le Puleaina o Punaoa Fa'alafua:  
 1. Ta'iala o le Puleaina o le manulele o le maina;  
 2. Ta'iala o le Puleaina o Punaoa Fa'alafua i motu o Aleipata;  
 3. Ta'iala mo le Toe Totoina o le Fa'asao o le Maua o Vaea;  
 4. Ta'iala mo le Toe Totoina o le Fa'asao OLPP;

DEC-MNRE SPREP gef UNEP

---

---

---

---

---

---

---

---

Slide 10



---

---

---

---

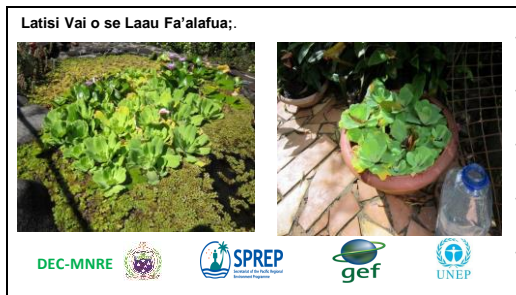
---

---

---

---

Slide 11



---

---

---

---

---

---

---

---

Slide 12



---

---

---

---

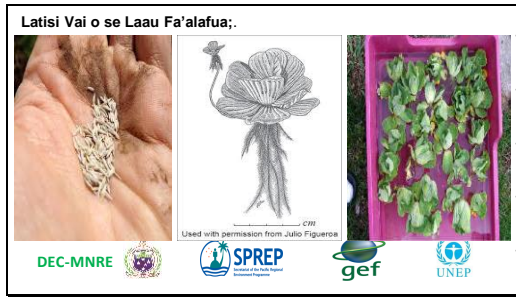
---

---

---

---

Slide 13



---

---

---

---

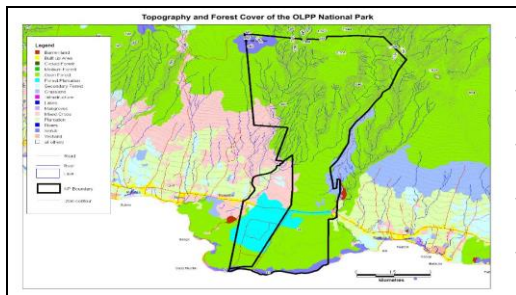
---

---

---

---

Slide 14



---

---

---

---

---

---

---

---

Slide 15



---

---

---

---

---

---

---

---



Slide 16

- Se'i i luga;
- Fa'ala;
- Susunu;
- Tanu;
- Lipoti i le Matagaluega –  
MNRE – 67200; Vaega o Vaomatua  
– Togitogiga – 24294;



Small tractor with plant chopping machine

---

---

---

---

---

---

---

2. Summary of OLPP National Park Management Plan and Current Activities (Elizabeth Kerstin)

Slide 1




---

---

---

---

---

---

---

---

Slide 2




---

---

---

---

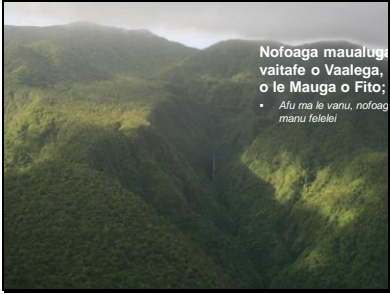
---

---

---

---

Slide 3




---

---

---

---

---

---

---

---

Slide 4



---

---

---

---

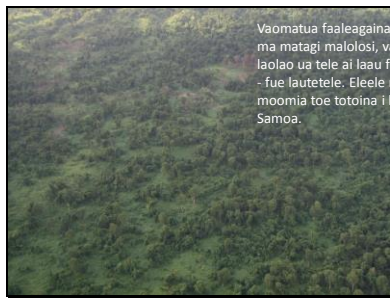
---

---

---

---

Slide 5



---

---

---

---

---

---

---

---

Slide 6



---

---

---

---

---

---

---

---

Slide 7

**Vaega o le Folasaga**

1. Faatomuaga
  - O a Fanua Faasao??
  - O a vaega taua o le Fanua Faasao o OLPP
2. O le peleni mo le pulea lelei ina o le OLPP
3. Galuega faatino ma galuega fuafua mo le Fanua Faasao

---

---

---

---

---

---

---

---

Slide 8

**O a Fanua Faasao?**

- O laufanua ia ua tuueseina e le Malo mo le faasaoina o punaoa faanatura
- Faasao e tauala lea i le puipuia o laau samoa, manu felelei ma isi o lo o mafai ona maua ai i totonu. E aofia ai foi le puipuia mai ona vaega taua e pei o maa lava.
- Faasaoina lea o vaega faafeatunuu e pei o talatuu e alai ona taua lea laufanua.
- O le fanua faasao o le Pupu-Pue o o lo faamauina o se fanua faasao lea sa faatuina i Samoa aemaise o le atu pasefika.

---

---

---

---

---

---

---

---

Slide 9

**Vaega taua o le Fanua Faasao OLPP**

Faatuina	1978 (First NP in Samoa and the South Pacific)
Itumalo/Afioaga	Siumu (Siumu, Saaga)/Faleailli (Saleilua, Poutasi)
Puleaina o le Fanua Faasao	Government of Samoa- National Park (IUCN Category II)
Aofai o le fanua	Approximately 5019 ha incl. Togitogiga forest plantation
Vaomatua mao'i	Large range of vegetation types from littoral forest, lowland rainforest, disturbed forest to montane forest and herbaceous marsh in craters. Highly impacted by cyclones and by fue lautetele below 200m
Ola faanatura o manu ma laau	42 birds, 5 mammals and 4 lizard species. 352 plant species (46% of native plants in Samoa)
Ituuga elelele	Mostly Puapua volcanics (3000 years yrs bp) but also areas of Salani (100,000 yrs bp) and Fagaloa volcanics (3 million years bp) Inland
Laufanua	Highly dissected mountain range in the north (1158 m (Vaivai)) down to coastal plain in the south and lava cliffs at sea level.
Suavai	Mataloa Stream (Togitogiga) to east; Va'alega river (Saaga)
Aufiaga ogaoga	Invasive species (weeds, mammals etc), Cyclones, Encroachment? Hunting?

---

---

---

---

---

---

---

---



Slide 13

**Galuega faatino tauave mo le pulea lelei o le OLPP**

- Faaititiia/faatamaia o laau faalafua ma le toe totoina o laau Samoa - 25ha toe totoina tausaga ua mavae, 10ha tausaga faaletupe 2015-16.
- Vaaila lelei o le Ofisa o Faamatalaga ma malo/turisi mai fafo, fanau aoga mo le faatinoina o suesuega.
- Faaleleia o auata savali.
- Faaleleia o aseta e faaogaina e turisi/malo mai fafo.
- Asiasiga ma le vaaila lelei o galuega ma amioga le-faatulafonoina e aofia ai le faamalosia o alaiaga o le Tulafono Aitu ma le molia o se tasi na te sollia leni Tulafono – galuega tauave lea a AO.
- Faalelele o le auauunaga mo le faalauteleina o le malamalama (i.e. Fausiina o pepa o faamatalaga, faaleleia le aupega tafa'ilagi o le OLPP, faatinoina o aoaoga i totonu o le fanua faasao ma isi).
- Soosoo tauau ma isi faalapotopotoga mo le faatinoina o galuega aua le faaleleia o le fanua faasao (i.e. Ofisa o Turisi).

---

---

---

---

---

---

---

---

---

---

---

---

Slide 14

**Galuega Fuafuaina mo le Fanua Faasao o OLPP**

- Faatinoina o se Suesuega (Conduct a Cost Benefit Analysis) mo le faia o todogi mo le ulufale/faaogaina o vaega o le fanua faasao – aoina faamatalaga mai turisi/malo asiasi i le fanua faasao i le 2008, e 45% i latou e lagolagoina lea tulaga e aofia ai ma le faaleleia o nisi o vaega o le fanua faasao e tatau ona mata'ituina e le Matagaluega a'o le'i pasia lea fuafuaga.
- Fesoasoani i le faatinoina o galuega a poloketi mo ni galuega faaleleia faapea suesuega o le siosiomaga e faatino i totonu o le fanua faasao.
- Toe fausia se isi peleni fou aua le fuafua leleina ma galuega tauave mo le lumanai.

---

---

---

---

---

---

---

---

---

---

---

---

Slide 15




---

---

---

---

---

---

---

---

---

---

---

---

### 3. Summary of OLPP Restoration Plan (Timoteo Moresi)

Slide 1




---

---

---

---

---

---

---

---

Slide 2

- Vaega autu Folasaga**
1. Fa'a'iloina:
    - Taa o le Fa'asao – OLPP NP
    - Punaoa Fa'alafua
    - Toe Totoina o se Vaomatua ua Fa'atamaia i Punaoa Fa'alafua;
  2. Fa'aiuga o le Sailiiliga o Punaoa Fa'alafua;
  3. Manu Lauti o le Toe Totoina o le Vaomatua;
  4. Ta'iala mo le Toe Totoina o le Vaomatua;
  5. Fa'atalanoaga;

---

---

---

---

---

---

---

---

Slide 3

- O vaega taa o le Faasao**
- Tamaoiga o le ola faalenatura nofoaga. ft manu felelei, laau manogi, laau fai vai, laau samoa.
  - Foliga vaaia o le laufanua, ft lava.
  - Punaoa Suava'i – fofoga taumafa.
  - Tafaoga ma tagata asiasi mai, ft vaitafe, o auala savali, foliga vaaia o le nofoaga.
  - Suesuega faatino – ft auala mo le pulea ina o meaola fa'alafua, o meaola ua lamatia ma faaititia, suesuega a le fanau.

---

---

---

---

---

---

---

---

Slide 4

**Fa'afitauli...**

**Ua maituina i le fa'asao Punaoa Fa'alafua ma ua fa'aleagaina ai ola fa'anatura ma le ekosisitema moni o Samoa....**




---

---

---

---

---

---

---

---

Slide 5

**Faa pefea ona feaveaina?**

- Tele lava ina o mai mai fafo = e le o ni punaoa Samoa, taunuu mai ona o atina'e a tagata (eg fefa'atauaiga, faigamalaga a tagata)
- Masani ona o'o mai i ouala le fuafuaina ma le le malamalama,
- Ae e i ai a latou aoga pe afai e pulea lelei;
- Punaoa Fa'alafua = e ala sasalo, na te fa'aleagaina se nofoaga aoga  
➢ Fa'ama'i ma vao

**Latou te fa'aleagaina fa'atoaga, ola fa'anatura ma le ekosisitema, aganu'u ma tula'i mai ai fa'afitauli!**




---

---

---

---

---

---

---

---

Slide 6

**Fa'aleagaina o Punaoa o le Lalolagi ona o Punaoa Fa'alafua**

•I le lalolagi, 67,000 ituaiga fa'ama'i o fau toto o mo fa'atoaga – 9,000 ituaiga ituaiga ma tole, 50,000 ituaiga ituaiga ma le 6,000 ituaiga vao

•Sili atu i le 70% o ituaiga punaoa fa'alafua nei e sumai mai fafo

•Ua fa'aititia i le 50-60% meaai ma taumafa maua o le lalolagi ona o punaoa fa'alafua

•Ata fa'ata'ita'i o tupe mana'omia mo le puleaina o punaoa fa'alafua i le tausaga

\$7 billion	South Africa
\$12 billion	UK
\$13 billion	Australia
\$50 billion	Brazil
\$115 billion	India
\$137 billion	USA
????	Samoa




---

---

---

---

---

---

---

---



Slide 7

**Auala 1 -Toe Totoina/Atina'eina o le Vaomatua?**  
 "Puleaina o punaoa fa'alafua ma toe atina'e le laufanua i le ola faanatura o Samoa"  
 "Fesoasoani mo le ola lausiusi o le ola fa'anatura"




---

---

---

---

---

---


---

---

Slide 8

**Vaega Lelei o le Toe Totoina o le Vaomatua:**

- O se Fa'ata'ita'iga Lelei: si'itia le silafia i le fa'aleagaina e punaoa fa'alafua o le ola fa'anatura ma auala e pulea ai nei punaoa fa'alafua;
- Si'itia le ekosistema: si'itia le tulaga o le ekosistema ma lona aoga i le ola fa'anatura ma malosi e tete'e atu i nisi auala e toe fa'aleagaina ai;
- Si'itia o le ola feso'ota'i ma isi auunaga fa'aekosistema mo le tagata soifua;
- Avanoa mo tupe maua i le fa'atauina o le kaponi?




---

---

---

---

---

---

---

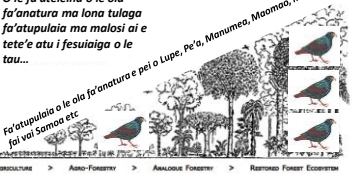
---

Slide 9

**Tamaoiga Maua i le Toe Fa'aleleia o le Ola Fa'anatura**

*O le fa'ateleina o le ola fa'anatura ma lona tulaga fa'atupulaila ma malosi ai e tete'e atu i feso'otaiga o le tau...*

*Fa'atupulaila o le ola fa'anatura e pei o Lupe, Pe'a, Manumea, Maomao, ma lau fai va Samoa etc*



Source: Forest Restoration Research Unit, 2008. A Practical Guide, Biology Department, Science Faculty, Chiang Mai University, Thailand.

---

---

---

---

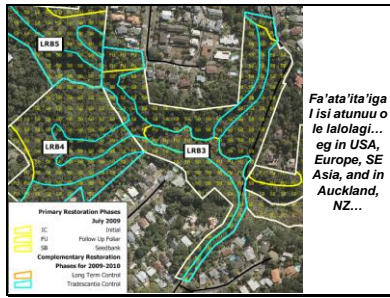
---

---

---

---

Slide 10



---

---

---

---

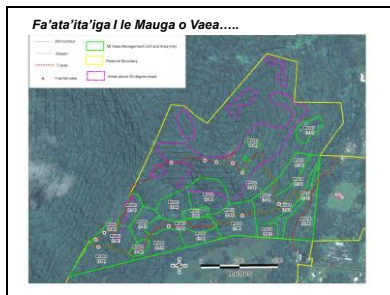
---

---

---

---

Slide 11



---

---

---

---

---

---

---

---

Slide 12



---

---

---

---

---

---

---

---

Slide 13

**Lua Vaega Taua – Toe Totoina o le Vaomatua**



*Puleaina o le Vao*



*Totoina o Laau*

---

---

---

---

---

---

---

---

---

---

---

---

Slide 14

**Fue Lautetele, o se fa'afitauli...**

*Fa'atamaina e le fue lautetele o laau ina ua mavae afa ma'afosi....*



*Fue Lautetele*

Vave atu le ola o le fue nai lo laau

Fa'aleagaina laau ma fa'alavelave i le ola ma le tupu a'e o laau,

Taofiofia le toe totogo ane o fatu laau ma laau ta'iti!

➔ **LEAGA TELE MO LE VAOMATUA!**

---

---

---

---

---

---

---

---

---

---

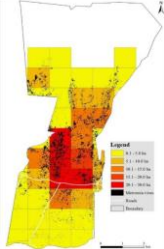
---

---

Slide 15

**TULAGA O LE FUE LAUTETELE I LE FA'ASAO O LE PUPU PUE: FAULTUAINA AI LE TOE TOTIINA O LE VAOMATUA O LE FA'ASAO (Asia Air Survey 2014)**

*Five *Merremia peltata* intensity zones*



Soone mo le Toe Totoina	Faamatalaga	Pasene fa'afitauli o le Puleaina (P)
Mauamata tolu le laau	Pasene e a'o i ai le fue lautele	<5%
Mauamata fa'afitauli	Vaega e a'o i ai le fue lautele (fa'afitauli) ma le fue lautele (50% ma le fue lautele)	5-20%
Mauamata fa'afitauli	Vaega e a'o i ai le fue lautele (fa'afitauli) ma le fue lautele (50% ma le fue lautele)	20-35%
Mauamata fa'afitauli	Vaega e a'o i ai le fue lautele (fa'afitauli) ma le fue lautele (50% ma le fue lautele)	35-50%
Mauamata fa'afitauli	Vaega e a'o i ai le fue lautele (fa'afitauli) ma le fue lautele (50% ma le fue lautele)	>50%

- Ua aafia uma e le fue lautetele le 274 heka po o le 6% o le fa'asao
- 72% o le fue lautetele o lo o ala i lalo ane o le 200m mai i le suasami;

---

---

---

---

---

---

---

---

---

---

---

---







Slide 25

**Le isi laasaga faaauau...**

- E oo atu ia Ianuari 8 ua maea ona tuufaatasi tusi taiala uma o polokalame e aofia ai ma tupe faaalu o vaega taitasi.
- Tapenaina ni alafua/Tusi taiala mo le sailia o seleni e faatinoina ai galuega faatino.
- Faa faigaluegaina o tagata mai i nuu ma afioaga e faatinoina galuega aua...

---

---

---

---

---

---

---

---

Slide 26




---

---

---

---

---

---

---

---

Slide 27

**Galuega Faatino.  
Tali i Fesili**

1. O le a sou manatu i polokalame faataotoo ma fuafuaaga alualumamao aemaise galuega faatino ua fuafuaina.?
2. Faapefea ona fesoasoani mai nuu ma afioaga mo le puleaina aemaise le toe totoina o lenei nofoaga.
3. O a ni auala e mafai ona faatinoina e le vaega a le vaomatua mo le puleaina lelei o le paka faasao?

---

---

---

---

---

---

---

---

# Annex 3. Evaluation Form

## OLPP OPERATIONAL PLAN

### Workshop Evaluation 2015

Name: \_\_\_\_\_ Village: \_\_\_\_\_

**Instructions:** Please share your feedback on the workshop to help is improve for next time. Please rate the following on a scale of 1 – 5: (circle the relevant box)

#### Presentations

	Poor	Fair	Average	Very Good	Excellent
Overall ranking of the presentations (in terms of clarity and usefulness).	1	2	3	4	5

Comments to support your rating

---

---

#### Break out groups

	Poor	Fair	Average	Very Good	Excellent
Overall ranking of the break out groups (in terms of the way they were organized and how useful they were)	1	2	3	4	5

Comments to support your rating

---

---

#### Overall Quality

	Poor	Fair	Average	Very Good	Excellent
Overall ranking of the workshop (in terms of the way it was organized and how useful it was)	1	2	3	4	5

---

---

What did you like most about the workshop?

---

---

What are some suggestions for improvement?

---

---

**FAAFETAI TELE LAVA**