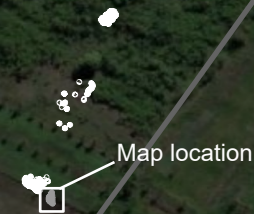
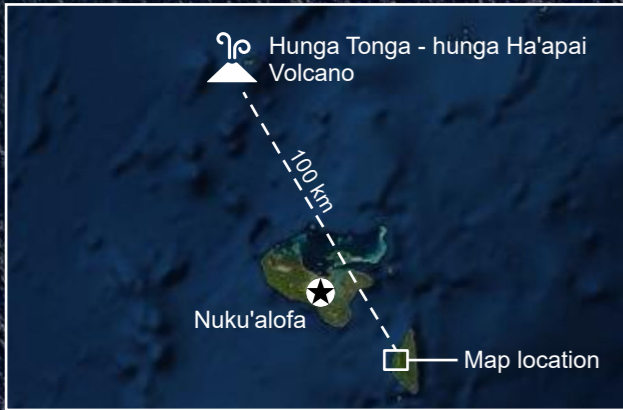


TONGA

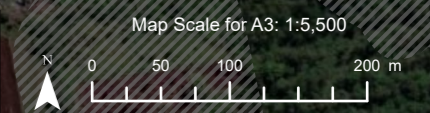
'OHONUVA TOWN, 'EUA PROPE DISTRICT, 'EUA PROVINCE

IMAGERY ANALYSIS: 20&21/01/2022 PUBLISHED 21/01/2022 V1.



Damage assessment in 'Ohonua town, 'Eua Prope district, 'Eua division, Tonga as of 20 & 21 January 2022

This map illustrates the impact of the Hunga Tonga-hunga Ha'apai volcanic eruption and the subsequent tsunami in 'Ohonua town ('Eua Prope district, Tonga) and damage assessment as detected from Pleiades images acquired on 20 January 2022 at 11:20 local time and 21 January 2022 at 11:13 local time. Among the 2,028 structures were identified, of which 1,231 structures are in cloud-free areas. Amongst the analyzed 1,231 structures, 54 were identified as damaged or destroyed, three as potentially damaged structures, and 1,174 buildings appeared without any visible damage from space imagery analysis. Six road obstacles were also identified in the cloud-free areas. This is a preliminary analysis and has not yet been validated in the field. Please send ground feedback to the United Nations Satellite Centre (UNOSAT).



Spatial Reference: Name: GCS WGS 1984, Datum: WGS 1984, Map Units: Degree
 Satellite Data (Post-event): Pleiades, Imagery Date: 19 & 20 Jan 2022, 21:20 & 21:13 UTC, Resolution: 50 cm, Copyright: © CNES (2022), Distribution Airbus DS, Source: Airbus DS
 Satellite Data (Pre-event): Worldview-3, Imagery Date: 14 Sep. 2021, Resolution: 50 cm, Copyright: © DigitalGlobe, Inc. (2022), Source: USGS
 Boundary data: Secretariat of the Pacific Community, Statistics for Development Division, Populated place: OpenStreetMap, Building footprint: OpenStreetMap, Background: ESRI Basemap
 Analysis: United Nations Satellite Centre (UNOSAT), Production: United Nations Satellite Centre (UNOSAT)