



**SERIES NO.**  
**SDT: 38-116**



**Government of Tonga**

# STATISTICAL BULLETIN

## ON



# INTERNATIONAL ARRIVALS AND DEPARTURES 2017



Statistics Department  
P.O. Box 149,  
Nuku'alofa,  
Kingdom of Tonga  
Website: [www.spc.int/prism/tonga/](http://www.spc.int/prism/tonga/)  
E-mail: [dept@stats.gov.to](mailto:dept@stats.gov.to)

**April 2018**  
Price:

## PREFACE

This is the eighteenth bulletin in a series of migration reports produced by the Statistics Department as the main reference on volume of overseas visitors, cruise ship passengers, yacht passengers and residents movement to and from the Kingdom of Tonga. This bulletin covers the period from January to December 2017 included monthly breakdown tables.

The data is extracted from the arrival and departure cards of the Customs Department and the Immigration Department, Ministry of Foreign Affairs, and Customs Department's vessel & yacht log book.

This bulletin presents information relating to number of arrivals and departures by port, passenger's type, transport mode, gender, age group, purpose of travel and country of usual residence.

Special thanks are extended to the Immigration Department of the Ministry of Foreign Affairs, Customs Department of the Ministry of Revenue Services, Airport Terminal Services, Tonga Airports Limited and Ports Authority for their assistance in providing their administrative information relating to these statistics. I am also grateful particularly to my staff in the Population and Social Statistics Division who contributed to the compilation of this report.

Any suggestions that recipients of this bulletin wish to make for its future improvement will be welcome by the Statistics Department.



.....  
Dr. Viliami Konifelenisi Fifita  
Government Statistician

## Table of Contents

Preface.....	1
Table of contents.....	2
List of figures.....	3
List of tables.....	3
List of statistical tables for year 2017.....	3
1.Main Fetures.....	4
1.1 General.....	4
1.2 Total International arrivals and departures.....	4
1.3 Total international arrivals and departures by annual percentage change.....	5
2. International Arrivals.....	6
2.1 International arrivals by transport mode 2004 - 2017.....	6
2.2 Total arrivals by transport mode and month 2017.....	6
2.3 Total air arrivals by passenger type and month 2017.....	7
2.4 Total air visitors by country of usual residence 2017.....	7
2.5 Visitors arrivals by purpose of visit 2017.....	8
2.6 International air visitors by age group 2017.....	8
3. International Departures.....	9
3.1 Air departures by gender and month 2017.....	9
3.2 Air departures by country of usual residence, 2016.....	9
4. Explanatory Notes.....	10
4.1 Purpose.....	10
4.2 Coverage.....	10
4.3 Source of data.....	10
4.4 Data limitation.....	10
5. Glossary.....	11

## List of Figures

Figure 1: Total International Arrivals and Departures 2004 – 2017	4
Figure 2: International Arrivals by Transport Mode 2004 – 2017	6
Figure 3: Monthly Arrivals by Mode of Transport 2017	6
Figure 4: Total Air Arrivals by Passenger Type 2017	7
Figure 5: Total Air Visitors by Country of Usual Residence 2017	7
Figure 6: Visitors by Purpose of Visit 2017	8
Figure 7: Visitors by Age Group 2017	8
Figure 8: Total Air Departures by Gender and Month 2017	9
Figure 9: Air Departures by Country of Usual Residence 2017	9

## List of Tables

Table 1.1: Total international Arrivals and Departures by Annual Percentage Change	5
--	---

## List of Statistical Tables for Year 2017

Table 1: Monthly Arrival and Departure by Mode of Travel and Net Migration, 2010 - 2017	12
Table 2: Arrivals by Age group, Passenger Type, Gender and month 2017	13
Table 3: Air Visitors by Country of Residence and Purpose of Visit, 2017	13
Table 4: Total Air Arrivals by Country of Residence and Purpose of Visit, 2017	14
Table 5: Air Departures by Age Group and Passengers Type for the year 2017	14
Table 6: Total Air Departures by Country of Residence and Gender for the year 2017	15

# 1. MAIN FEATURES

## 1.1 General

- a. Net overseas migration is the net gain or loss of population through immigration to Tonga and emigration from Tonga.
- b. Individuals are considered to be residents when they reside in Tonga for 12 months or more.
- c. For 2017, total international arrivals were 124,703 and total departures were 122,970, a net inflow of 1,733. This means that there are more persons arriving the Kingdom than persons departing for the year 2017.

## 1.2 Total International Arrivals and Departures

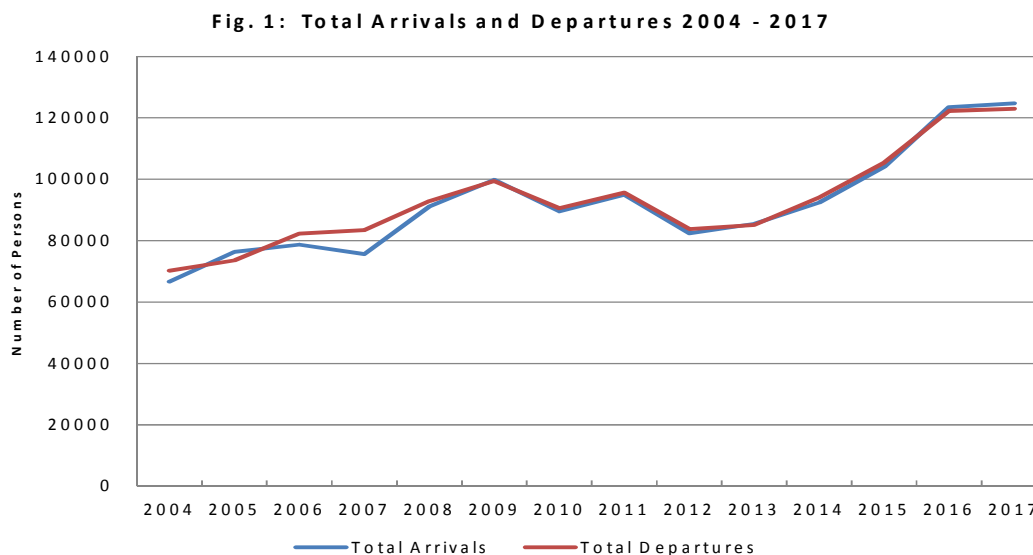


Fig 1. illustrates the total arrivals and departures to and from the Kingdom of Tonga for the years 2004 to 2017. The above graph shows a slightly upward trend from 2004 to 2007 despite the fluctuated trend from 2010 to 2012. The difference between the number of arrivals and departures from 2006 to 2008 indicates a larger number of emigrants than immigrants, or negative net migration rate. However, negative net migration continues until 2017, arrivals slightly higher than departures.

### 1.3 Total International Arrivals and Departures by Annual Percentage Change

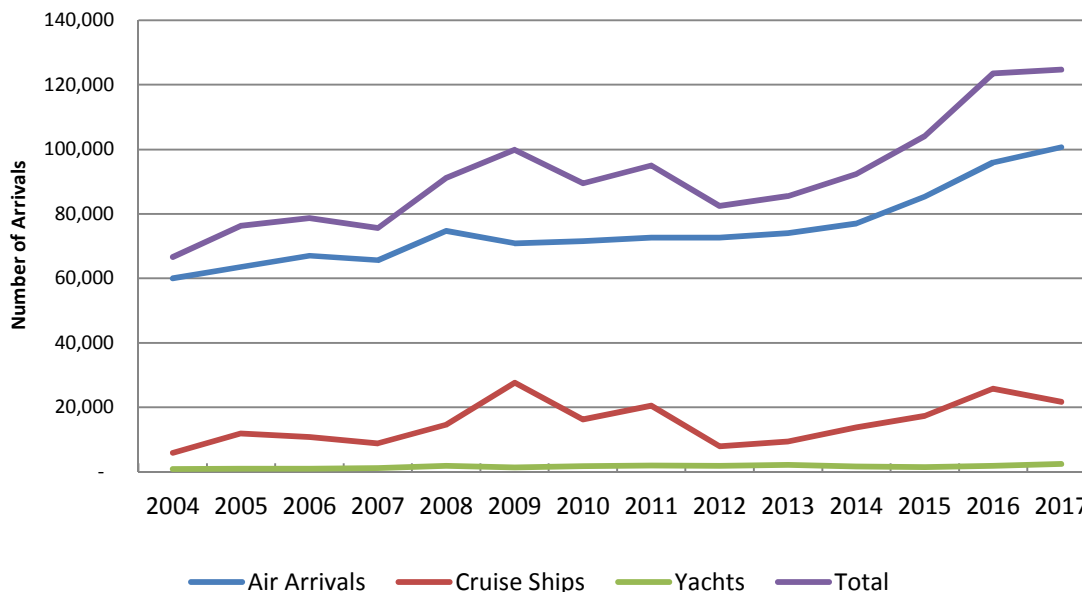
Year	Total Arrivals	%Change	Total Departures	%Change
2004	66,639	-	70,206	-
2005	76,286	14.5	73,540	4.7
2006	78,652	3.1	82,268	11.9
2007	75,587	-3.9	83,416	1.4
2008	91,128	20.6	92,890	11.4
2009	99,803	9.5	99,360	7.0
2010	89,506	-10.3	90,607	-8.8
2011	94,960	6.1	95,607	5.5
2012	82,400	-13.2	83,805	-12.3
2013	85,473	3.7	85,134	1.6
2014	92,374	8.1	94,090	10.5
2015	104,070	12.7	105,379	12.0
2016	123,462	18.6	122,266	16.0
2017	124,703	1.0	122,970	0.6

Table 1.1 shows the total arrivals or person arrived in the kingdom with the highest point in 2017 with 124,703. The largest increase in arrivals occurred from 2007 to 2008 with 21% followed 2015 to 2016 with 19%. Similarly, the total departures or persons leaving Tonga in 2017 (122,970).

## 2. INTERNATIONAL ARRIVALS

### 2.1 International Arrivals by Transport Mode 2004 - 2017

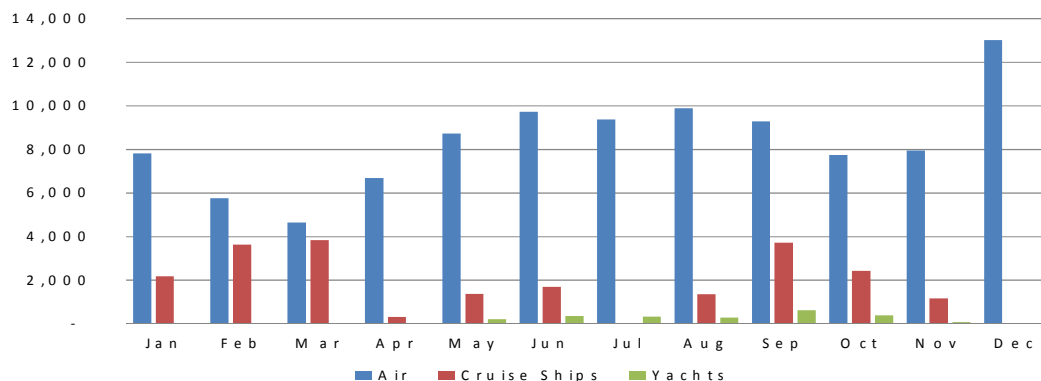
**Fig 2: International Arrivals by Transport Mode 2004 - 2017**



The above graph shows the total international arrivals to the Kingdom by transport mode for the year 2004 - 2017. It clearly shows that international air arrivals dominated the total international arrivals to the Kingdom followed by arrivals on cruise ships and yachts the least. The steep rise from 2014 to 2017 is mainly due to the dramatic increase in air arrivals as shown in the above graphs which were 85,269 in 2015, 95,930 in 2016 and 100,630 in 2017. Arrivals by Cruise ships was 17,375 in 2015, increased to 25,714 in 2016 and 21,719 in 2017. Yachts arrivals increased from 1,426 in 2015 to 1,818 in 2016 and 2,354 to 2017.

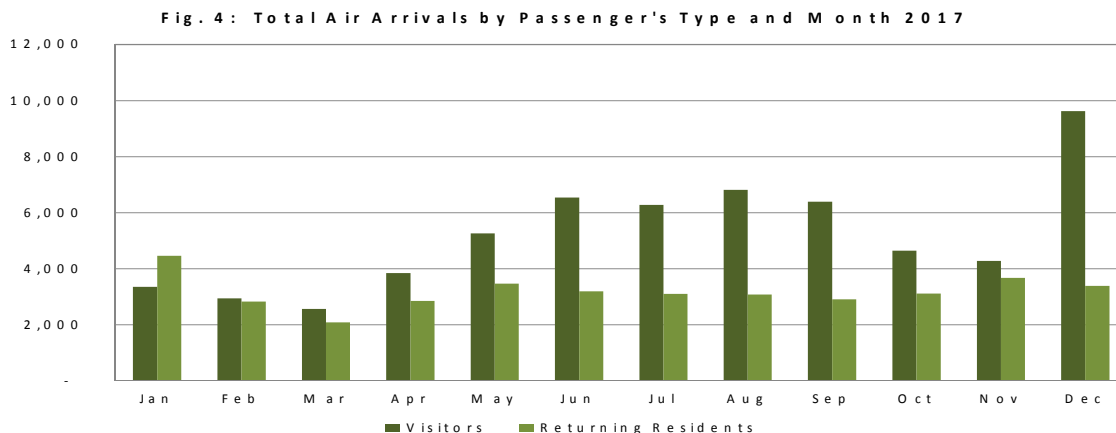
### 2.2 Total Arrivals by Transport Mode and Month 2017

**Fig. 3: Monthly Arrivals by Transport Mode 2017**



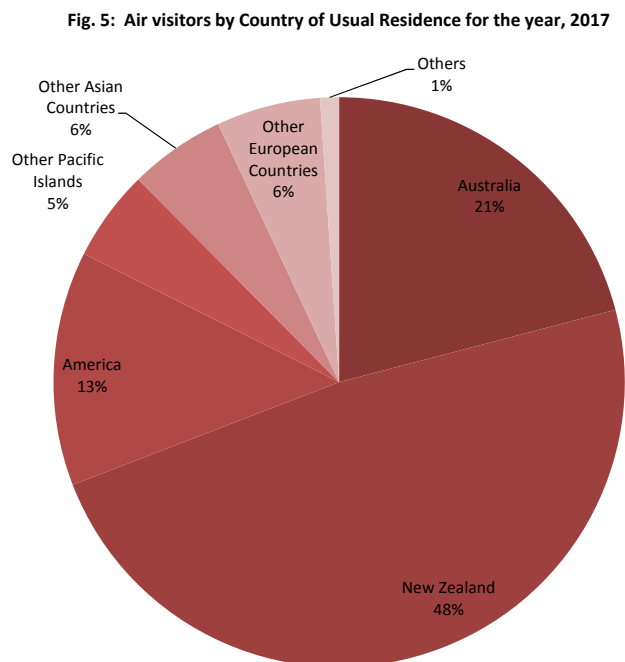
The above graph illustrates the total arrivals by transport mode and month for the year 2017. The air arrivals were highest in December (13,010) followed by August (9,881). Cruise ships visited the Kingdom in the month of January to June, August to November with the highest number of cruise ship arrivals was in March (3,839) followed by September (3,719)

### 2.3 Total Air Arrivals by Passenger Type and Month 2017



The highest number of returning residents arrived in Tonga was in January 2017. Most of the visitors arrivals in December especially the Tongans residing overseas visiting Tonga for Christmas Holidays.

### 2.4 Total Air Visitors by Country of Usual Residence 2017

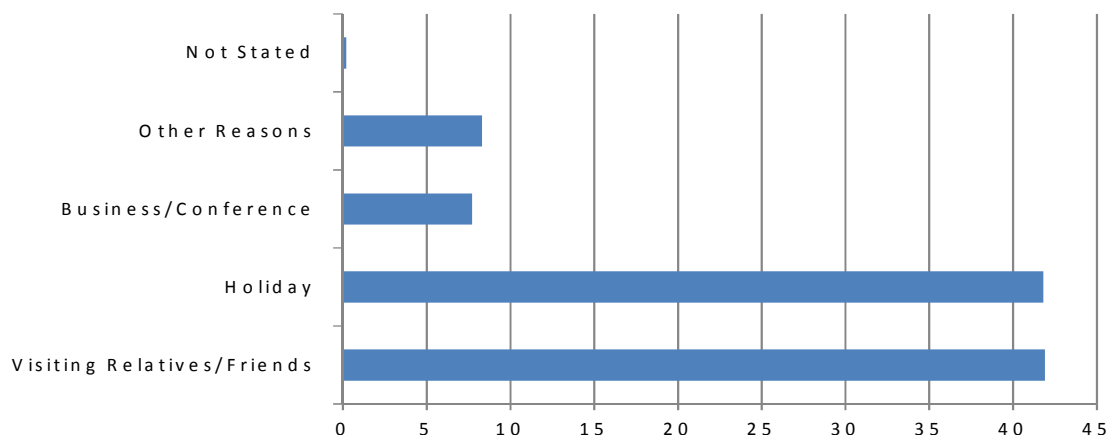




New Zealand remains as the leading country in visitors arrivals by country of usual residence accounting for 48.2% (30,150). This was followed by Australia with 20.9% (13,056) and the United States 13.3% (8,323)

## 2.5 Visitors Arrivals by Purpose of Visit 2017

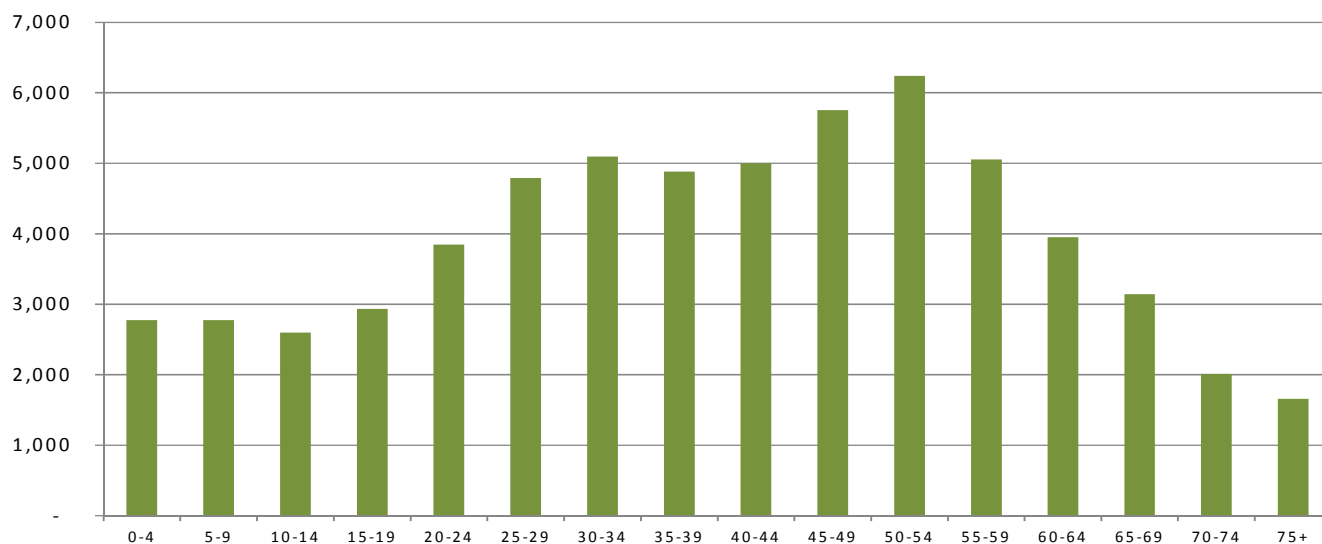
**Fig. 6: Air Visitors by Purpose of Visit for the year, 2017**



The most visitors visited to the Kingdom were visiting relatives and friends 41.9% (26,183). This was followed by 41.8% (26,138) who were here on Holiday/Vacation

## 2.6 International Air Visitors by Age Group 2017

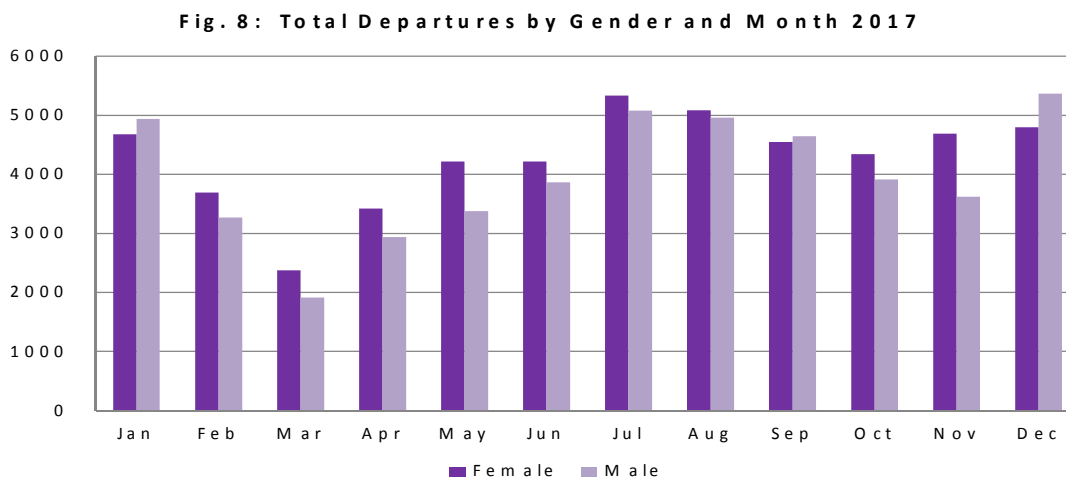
**Fig. 7: Air Visitors by Age Group for the year 2017**



The majority of the air visitors were in the age group of 50 – 54 (6,241) followed by 45 – 49 (5,752)

### 3 International Departures

#### 3.1 Air Departures by Gender and Month 2017



The above figure shows that the lowest departures for female was in the month of March followed by April. The highest number of departures was in the month of July with 5,330 for females and 5,366 for males in the month of December.

#### 3.2 Air Departures by Country of Usual Residence, 2016

**Fig. 9: Air Departures by Country of Usual Residence for the year 2017**

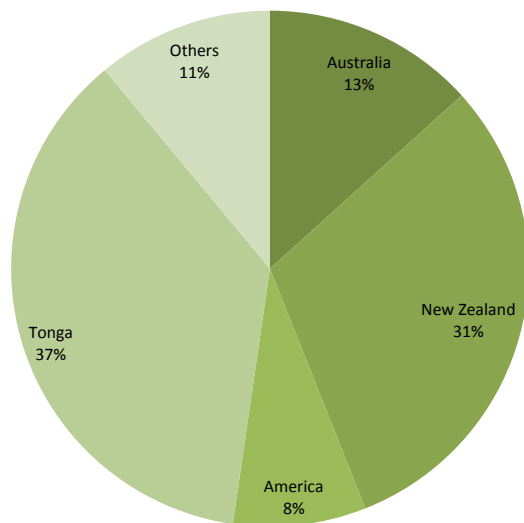


Figure 9 shows that most of the persons departing in the year 2017 were persons residing in the Kingdom of Tonga 36,485 (36.7)% followed by New Zealand 30,437 (30.7)% and Australia 13,183 (13.3)%.

## 4 EXPLANATORY NOTES

### 4.1 PURPOSE

The purpose of this bulletin is to give an overview of total international arrivals and departures and their main social and economic characteristics.

Statistics on Overseas Arrivals and Departures related to the number of movements of travelers rather than the number of travelers (i.e. the multiple movements of individual persons during a given reference period are all counted).

### 4.2 COVERAGE

This bulletin covers all international arrivals and departures from the Kingdom of Tonga, including yachts and those through Lupepau'u Airport and all outer islands, during 2014. Final totals of arrivals and departures are based on the reconciliation between the Ministry of Foreign Affairs and Immigration Electronic data, Customs Wharf Register and Air Terminal Services Manifest.

### 4.3 SOURCE OF DATA

Data is extracted from the arrival and departure cards of the Immigration Department, Ministry of Foreign Affairs, and Customs vessel and yacht log book. The Statistics Department reconciles the figures from the Air Terminal Services Manifest and Ports Authority Manifest to produce final published data.

### 4.4 DATA LIMITATIONS

Passengers on yachts and ships do not complete arrival and departure cards therefore we are unable to provide details on Age, Sex and Purpose of visit.

Due to the limitation and incomplete data, we are unable at this stage to determine whether arrivals and departures are of a long term or short term duration.

*(Note: This problem caused by incomplete arrival and departure card)*

## 5 GLOSSARY

- A Visitor is a person other than a Tongan citizen, permit holder and exempted person, who usually stays at least 24 hours in the kingdom, or who stays overnight in accommodation within Tonga. This refers to passengers arriving by air and yacht only.
- Cruise Ship Passengers are defined as those who arrive and depart in the same vessel which is a cruise trip, and use that vessel's accommodation during their stay in Tonga. They are also known as "Excursionist"
- A Returning Resident is a person who has the Kingdom of Tonga as their permanent address for more than six months of the year and returns to Tonga after a trip overseas. Tongan residence is self-defined as reported by travelers when completing the Passenger Arrival Card.
- Main reason for journey On arrival in Tonga, all overseas visitors and Tongan residents are asked to state their purpose of journey. Statistics are published using the following categories: Holiday, Business, Visiting friends and /or relatives, Conference and Others.
- Mode of Transport Only air, yacht and cruise ships passengers are included. Passenger/crew on cargo, navy or special vessels are excluded.

Table 1. Monthly Arrival and Departure by Mode of Travel and Net Migration, 2010 - 2017

Period	Visitors Arrivals				Returning Residents				Total Arrivals				Total Departures				Net Migration
	Alr	Shlp	Yacht	Total	Alr	Shlp	Yacht	Total	Alr	Shlp	Yacht	Total	Alr	Shlp	Yacht	Total	
2005	42,437	11,840	943	55,220	21,066			21,066	63,503	11,840	943	76,286	60,276	11,871	1,393	73,540	2,746
2006	46,268	10,809	868	57,945	20,707			20,707	66,975	10,809	868	78,652	68,637	13,049	582	82,268	(3,616)
2007	43,344	8,790	1,140	53,274	22,313			22,313	65,657	8,790	1,140	75,587	71,325	10,461	1,630	83,416	(7,829)
2008	50,462	14,599	1,828	66,889	24,239			24,239	74,701	14,599	1,828	91,128	76,704	14,602	1,584	92,890	(1,762)
2009	45,711	27,641	1,317	74,669	25,134			25,134	70,845	27,641	1,317	99,803	70,949	27,150	1,261	99,360	443
2010	47,081	16,265	1,659	65,005	24,501			24,501	71,582	16,265	1,659	89,506	72,533	16,244	1,830	90,607	(1,101)
2011	46,005	20,519	1,849	68,373	26,587			26,587	72,592	20,519	1,849	94,960	73,589	20,550	1,468	95,607	(647)
2012	47,457	7,957	1,816	57,230	25,170			25,107	72,627	7,957	1,816	82,400	74,098	7,987	1,720	83,805	(1,405)
2013	48,188	9,432	2,045	59,665	25,808			25,808	73,996	9,432	2,045	85,473	73,938	9,427	1,769	85,134	339
2014	50,436	13,733	1,632	65,801	26,573			26,573	77,009	13,733	1,632	92,374	78,604	13,724	1,762	94,090	(1,716)
2015	53,752	17,375	1,426	72,553	31,517			31,517	85,269	17,375	1,426	104,070	86,574	17,383	1,422	105,379	(1,309)
2016	59,130	25,714	1,818	86,662	36,800			36,800	95,930	25,714	1,818	123,462	95,043	25,703	1,520	122,266	1,196
2017	62,506	21,719	2,354	86,579	38,124			38,124	100,630	21,719	2,354	124,703	99,280	21,698	1,992	122,970	1,733
2014																	
January	3,259	1,446	3	4,708	3,167			3,167	6,426	1,446	3	7,875	8,028	1,444	-	9,472	(1,597)
February	2,441	3,677	24	6,142	1,861			1,861	4,302	3,677	24	8,003	5,958	3,676	14	9,648	(1,645)
March	2,484	1,817	10	4,311	1,880			1,880	4,364	1,817	10	6,191	4,885	1,811	22	6,718	(527)
April	3,363	2,224	57	5,644	2,034			2,034	5,397	2,224	57	7,678	5,063	2,227	40	7,330	348
May	4,189	260	243	4,692	2,872			2,872	7,061	260	243	7,564	6,228	260	94	6,582	982
June	4,463	1,739	256	6,458	2,122			2,122	6,585	1,739	256	8,580	5,605	1,737	294	7,636	944
July	5,477	-	233	5,710	2,128			2,128	7,605	-	233	7,838	8,213	-	286	8,499	(661)
Aug	5,090	-	201	5,291	1,432			1,432	6,522	-	201	6,723	6,753	-	192	6,945	(222)
Sep	4,779	308	209	5,296	2,248			2,248	7,027	308	209	7,544	7,035	308	271	7,614	(70)
Oct	4,102	1,760	307	6,169	2,064			2,064	6,166	1,760	307	8,233	6,588	1,759	381	8,728	(495)
Nov	3,488	199	81	3,768	2,559			2,559	6,047	199	81	6,327	5,892	199	155	6,246	81
Dec	7,301	303	8	7,612	2,206			2,206	9,507	303	8	9,818	8,356	303	13	8,672	1,146
2015																	
January	3,343	2,935	20	6,298	3,720			3,720	7,063	2,935	20	10,018	8,779	2,935	29	11,743	(1,725)
February	2,381	2,373	23	4,777	2,119			2,119	4,500	2,373	23	6,896	5,498	2,373	7	7,878	(982)
March	2,944	2,011	6	4,961	2,277			2,277	5,221	2,011	6	7,238	5,635	2,011	9	7,655	(417)
April	3,642	1,940	31	5,613	2,277			2,277	5,919	1,940	31	7,890	6,408	1,940	30	8,378	(488)
May	3,820	555	203	4,578	2,690			2,690	6,510	555	203	7,268	5,968	555	89	6,612	656
June	5,898	1,757	155	7,810	3,652			3,652	9,550	1,757	155	11,462	5,600	1,757	251	7,608	3,854
July	5,961	-	176	6,137	2,115			2,115	8,076	-	176	8,252	10,489	-	143	10,632	(2,380)
Aug	4,809	-	231	5,040	2,085			2,085	6,894	-	231	7,125	7,606	-	206	7,812	(687)
Sep	4,915	1,953	282	7,150	2,454			2,454	7,369	1,953	282	9,604	6,604	1,958	260	8,822	782
Oct	4,045	3,460	203	7,708	2,529			2,529	6,574	3,460	203	10,237	7,326	3,463	251	11,040	(803)
Nov	3,550	291	96	3,937	2,769			2,769	6,319	291	96	6,706	6,817	291	142	7,250	(544)
Dec	8,444	100	-	8,544	2,830			2,830	11,274	100	-	11,374	9,844	100	5	9,949	1,425
2016																	
Jan	3,581	-	-	3,581	4,569			4,569	8,150	-	-	8,150	9,441	-	1	9,442	(1,292)
Feb	3,259	5,474	-	8,733	2,720			2,720	5,979	5,474	-	11,453	7,592	5,467	-	13,059	(1,606)
Mar	3,315	1,411	4	4,730	2,653			2,653	5,968	1,411	4	7,383	7,073	1,411	4	8,488	(1,105)
Apr	3,537	3,690	8	7,235	2,918			2,918	6,455	3,690	8	10,153	6,135	3,698	6	9,839	314
May	5,220	-	245	5,465	3,242			3,242	8,462	-	245	8,707	7,104	-	154	7,258	1,449
Jun	6,763	1,784	259	8,806	3,090			3,090	9,853	1,784	259	11,896	8,356	1,777	195	10,328	1,568
Jul	6,103	-	187	6,290	2,533			2,533	8,636	-	187	8,823	9,665	-	194	9,859	(1,036)
Aug	5,880	1,394	314	7,588	2,736			2,736	8,616	1,394	314	10,324	7,033	1,387	229	8,649	1,675
Sep	5,185	-	359	5,544	2,907			2,907	8,092	-	359	8,451	7,555	-	341	7,896	555
Oct	4,298	6,630	342	11,270	2,886			2,886	7,184	6,630	342	14,156	7,699	6,626	258	14,583	(427)
Nov	3,881	176	88	4,145	3,497			3,497	7,378	176	88	7,642	7,349	176	132	7,657	(15)
Dec	8,108	5,155	12	13,275	3,049			3,049	11,157	5,155	12	16,324	10,041	5,161	6	15,208	1,116
2017																	
Jan	3,351	2,187	8	5,546	4,462			4,462	7,813	2,187	8	10,008	9,620	2,185	7	11,812	(1,804)
Feb	2,936	3,642	-	6,578	2,832			2,832	5,768	3,642	-	9,410	6,960	3,632	2	10,594	(1,184)
Mar	2,560	3,839	10	6,409	2,081			2,081	4,641	3,839	10	8,490	4,286	3,842	4	8,132	358
Apr	3,840	315	23	4,178	2,853			2,853	6,693	315	23	7,031	6,359	315	5	6,679	352
May	5,256	1,371	210	6,837	3,470			3,470	8,726	1,371	210	10,307	7,599	1,366	131	9,096	1,211
Jun	6,545	1,690	363	8,598	3,189			3,189	9,734	1,690	363	11,787	8,087	1,690	456	10,233	1,554
Jul	6,276	-	335	6,611	3,100			3,100	9,376	-	335	9,711	10,410	-	282	10,692	(981)
Aug	6,810	1,354	288	8,452	3,071			3,071	9,881	1,354	288	11,523	10,047	1,354	276	11,677	(154)
Sep	6,390	3,719	625	10,734	2,900			2,900	9,290	3,719	625	13,634	9,188	3,719	370	13,277	357
Oct	4,639	2,425	383	7,447	3,109			3,109	7,748	2,425	383	10,556	8,255	2,417	302	10,974	(418)
Nov	4,278	1,177	83	5,538	3,672			3,672	7,950	1,177	83	9,210	8,305	1,178	120	9,603	(393)
Dec	9,625	-	26	9,651	3,385			3,385	13,010	-	26	13,036	10,164	-	37	10,201	2,835

Table 2. Total Air Arrivals by Age Group and Month 2017

Age Group	Jan	Feb	Mar	Apr	May	Jun	Jul	Aug	Sep	Oct	Nov	Dec	Total
0-4	378	246	168	219	311	358	324	329	274	296	316	795	4,014
5-9	472	230	130	262	276	359	301	300	308	238	240	896	4,012
10-14	612	289	108	211	201	312	310	332	343	228	241	840	4,027
15-19	802	478	133	296	254	299	420	417	401	294	327	1,012	5,133
20-24	696	503	354	473	757	370	654	724	644	518	785	1,133	7,611
25-29	649	469	436	612	895	370	859	934	895	775	756	1,086	8,736
30-34	627	487	413	622	803	476	890	949	953	743	749	1,020	8,732
35-39	589	434	351	560	721	657	841	938	818	682	665	941	8,197
40-44	573	448	427	593	739	704	781	872	805	683	641	984	8,250
45-49	585	494	466	689	805	865	905	902	862	761	736	1,120	9,190
50-54	533	469	480	642	888	905	889	942	917	733	672	1,036	9,106
55-59	398	351	355	506	671	772	719	814	777	628	596	786	7,373
60-64	327	335	295	397	537	681	581	609	547	450	452	543	5,754
65-69	262	248	247	290	429	771	402	401	365	353	370	379	4,517
70-74	176	149	166	168	252	887	265	262	202	216	227	216	3,186
75+	134	138	112	153	187	948	235	156	179	150	177	223	2,792
<b>Total</b>	<b>7,813</b>	<b>5,768</b>	<b>4,641</b>	<b>6,693</b>	<b>8,726</b>	<b>9,734</b>	<b>9,376</b>	<b>9,881</b>	<b>9,290</b>	<b>7,748</b>	<b>7,950</b>	<b>13,010</b>	<b>100,630</b>
<b>% Distribution</b>	<b>7.8</b>	<b>5.7</b>	<b>4.6</b>	<b>6.7</b>	<b>8.7</b>	<b>9.7</b>	<b>9.3</b>	<b>9.8</b>	<b>9.2</b>	<b>7.7</b>	<b>7.9</b>	<b>12.9</b>	<b>100.0</b>
<b>GENDER</b>													
Male	3,864	2,825	2,379	3,570	4,909	4,978	4,780	5,150	4,856	4,090	4,247	6,563	52,211
Female	3,949	2,943	2,262	3,123	3,817	4,756	4,596	4,731	4,434	3,658	3,703	6,447	48,419
<b>Total</b>	<b>7,813</b>	<b>5,768</b>	<b>4,641</b>	<b>6,693</b>	<b>8,726</b>	<b>9,734</b>	<b>9,376</b>	<b>9,881</b>	<b>9,290</b>	<b>7,748</b>	<b>7,950</b>	<b>13,010</b>	<b>100,630</b>
<b>PASSENGERS TYPE</b>													
Returning Residents	4,462	2,832	2,081	2,853	3,470	3,189	3,100	3,071	2,900	3,109	3,672	3,385	38,124
Visitors	3,351	2,936	2,560	3,840	5,256	6,545	6,276	6,810	6,390	4,639	4,278	9,625	62,506
<b>Total</b>	<b>7,813</b>	<b>5,768</b>	<b>4,641</b>	<b>6,693</b>	<b>8,726</b>	<b>9,734</b>	<b>9,376</b>	<b>9,881</b>	<b>9,290</b>	<b>7,748</b>	<b>7,950</b>	<b>13,010</b>	<b>100,630</b>

Table 3: Air Visitors by Country of Residence and Purpose of Visit, 2017

Country of Usual Residence	Purpose of Visit						
	Total	% Distribution	Holiday/Vacation	Business/Conference	Visiting Relative/Friends	Other Reasons	Not Stated
Australia	13,056	20.9	5,287	915	5,756	1,080	18
New Zealand	30,150	48.2	11,686	1,733	14,698	1,950	83
Fiji	2,009	3.2	332	492	565	614	7
American Samoa	151	0.2	36	13	71	31	-
Western Samoa	331	0.5	65	107	106	52	2
Other Pacific Islands	736	1.2	113	331	137	153	2
Japan	819	1.3	424	164	132	97	2
China	1,603	2.6	884	362	180	176	1
India	81	0.1	30	18	8	26	-
Korea	139	0.2	70	23	34	12	-
Other Asian Countries	757	1.2	453	116	97	90	1
UK	971	1.6	754	58	96	63	-
Germany	778	1.2	715	7	35	20	1
France	335	0.5	220	40	40	31	4
Italy	176	0.3	159	3	9	5	-
Other European Countries	1,426	2.3	1,254	64	68	40	1
All African Countries	75	0.1	50	10	10	5	-
United States of America	8,323	13.3	3,179	314	4,077	723	30
Canada	308	0.5	224	20	45	20	-
Other American Countries	282	0.5	203	38	20	20	-
<b>Total</b>	<b>62,506</b>	<b>100.0</b>	<b>26,138</b>	<b>4,827</b>	<b>26,183</b>	<b>5,206</b>	<b>152</b>
<b>Percent Distribution</b>	<b>100.0</b>		<b>41.8</b>	<b>7.7</b>	<b>41.9</b>	<b>8.3</b>	<b>0.2</b>

Table 4: Total Air Arrivals by Country of Residence and Purpose of Visit, 2017

Country of Usual Residence	Purpose of Visit						
	Total	% Distribution	Holiday/Vacation	Business/Conference	Visiting Relative/Friends	Other Reasons	Not Stated
Australia	13,056	13.0	5,287	915	5,756	1,080	18
New Zealand	30,150	30.0	11,686	1,733	14,698	1,950	83
Fiji	2,009	2.0	332	492	565	614	7
American Samoa	151	0.2	36	13	71	31	-
Western Samoa	331	0.3	65	107	106	52	2
Tonga	38,124	37.9	-	-	-	-	38,124
Other Pacific Islands	736	0.7	113	331	137	153	2
Japan	819	0.8	424	164	132	97	2
China	1,603	1.6	884	362	180	176	1
India	81	0.1	30	18	8	26	-
Korea	139	0.1	70	23	34	12	-
Other Asian Countries	757	0.8	453	116	97	90	1
UK	971	1.0	754	58	96	63	-
Germany	778	0.8	715	7	35	20	1
France	335	0.3	220	40	40	31	4
Italy	176	0.2	159	3	9	5	-
Other European Countries	1,426	1.4	1,254	64	68	40	1
All African Countries	75	0.1	50	10	10	5	-
United States of America	8,323	8.3	3,179	314	4,077	723	30
Canada	308	0.3	224	20	45	20	-
Other American Countries	282	0.3	203	38	20	20	-
<b>Total</b>	<b>100,630</b>	<b>100.0</b>	<b>26,138</b>	<b>4,827</b>	<b>26,183</b>	<b>5,206</b>	<b>38,276</b>
<b>Percent Distribution</b>	<b>100.0</b>		<b>26.0</b>	<b>4.8</b>	<b>26.0</b>	<b>5.2</b>	<b>38.0</b>

Table 5: AIR DEPARTURES by Age Group and Passenger's Type for the year 2017

Age Group	Departing Residents	Percent Distribution	Visitors	Percent Distribution	Total	Percent Distribution
0 - 4	1,281	3.5	2,541	4.0	3,823	3.9
5 - 9	1,311	3.6	2,658	4.2	3,969	4.0
10 - 14	1,437	3.9	2,582	4.1	4,018	4.0
15 - 19	2,108	5.8	3,123	5.0	5,231	5.3
20 - 24	3,525	9.7	4,078	6.5	7,603	7.7
25 - 29	3,724	10.2	5,003	8.0	8,727	8.8
30 - 34	3,414	9.4	5,291	8.4	8,705	8.8
35 - 39	3,016	8.3	4,961	7.9	7,977	8.0
40 - 44	2,863	7.8	5,138	8.2	8,002	8.1
45 - 49	3,102	8.5	5,959	9.5	9,061	9.1
50 - 54	2,934	8.0	6,083	9.7	9,017	9.1
55 - 59	2,503	6.9	4,902	7.8	7,405	7.5
60 - 64	1,834	5.0	3,904	6.2	5,739	5.8
65 - 69	1,500	4.1	2,937	4.7	4,437	4.5
70 - 74	958	2.6	2,014	3.2	2,972	3.0
75+	974	2.7	1,619	2.6	2,593	2.6
<b>All Ages</b>	<b>36,485</b>	<b>100.0</b>	<b>62,795</b>	<b>100.0</b>	<b>99,280</b>	<b>100.0</b>
YACHT	-	-	1,992	-	1,992	0
CRUISE SHIP	-	-	21,698	-	21,698	0
<b>Total</b>	<b>36,485</b>	<b>100.0</b>	<b>86,485</b>	<b>100.0</b>	<b>122,970</b>	<b>100.0</b>

Table 6. Total Departures by Country of Residence and Gender for the year 2017

Country of Usual Residence	Male	Percent	Female	Percent	Total	Percent
	No.	Distribution	No.	Distribution	No.	Distribution
Australia	6,422	12.5	6,761	14.1	13,183	13.3
New Zealand	14,616	28.4	15,821	33.0	30,437	30.7
Fiji	1,253	2.4	775	1.6	2,028	2.0
American Samoa	93	0.2	53	0.1	146	0.1
Western Samoa	219	0.4	130	0.3	349	0.4
Tonga	20,024	39.0	16,461	34.4	36,485	36.7
Other Pacific Islands	452	0.9	281	0.6	733	0.7
Japan	518	1.0	257	0.5	775	0.8
China	1,017	2.0	589	1.2	1,606	1.6
India	41	0.1	28	0.1	69	0.1
Korea	73	0.1	62	0.1	136	0.1
Other Asian Countries	432	0.8	310	0.6	742	0.7
UK	502	1.0	467	1.0	969	1.0
Germany	389	0.8	414	0.9	803	0.8
France	185	0.4	152	0.3	338	0.3
Italy	112	0.2	71	0.1	183	0.2
Other European Countries	786	1.5	655	1.4	1,441	1.5
All African Countries	39	0.1	32	0.1	72	0.1
United States of America	3,923	7.6	4,300	9.0	8,223	8.3
Canada	130	0.3	154	0.3	284	0.3
Other American Countries	166	0.3	114	0.2	280	0.3
<b>Total</b>	<b>51,392</b>	<b>100.0</b>	<b>47,888</b>	<b>100.0</b>	<b>99,280</b>	<b>100.0</b>





**Printed by STATISTICS DEPARTMENT  
Nuku'alofa, TONGA—2018**